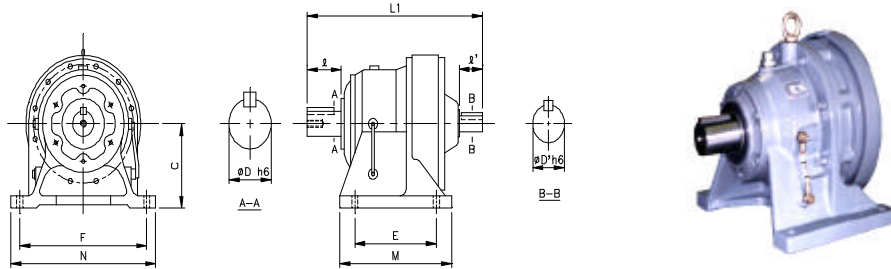


DARALI(tm) vs. SM-CYCLO(tm) Dimensional Comparison



← Dimensions in mm. →										← Dimensions in inch. →			
DARALI(TM)	SM-CYCLO®	SM-CYCLO®	Ctr. Ht.	Foot Print				Length	Output Shaft		Input Shaft		
B Series	3000 Series	4000 Series		C	E	F	M	N	L1	D	L	D'	L'
B07	3075	4075	80	60	120	84	144	145	.500	0.98	.500	.98	
B08	3085	4085	80	60	120	84	144	151	.750	1.18	.500	.98	
B09	3090	4090	100	90	150	130	180	Note 1	1.125	Note 2	.625	.98	
"	3095	4095	100	90	150	130	180	Note 1	1.125	Note 2	.625	.98	
"	3097	4097	100	90	150	130	180	Note 1	1.125	Note 2	.625	.98	
B10	3100	4100	100	90	150	135	180	Note 3	1.125	Note 4	.625	.98	
"	3105	4105	100	90	150	135	180	Note 3	1.125	Note 4	.625	.98	
Note 5	310H	410H	120	90	150	135	180	208	1.125	1.38	.625	.98	
B11	3110	4110	120	115	190	155	230	259	1.500	2.17	.750	1.38	
"	3115	4115	120	115	190	155	230	259	1.500	2.17	.750	1.38	
B12	311H	4125	140	115	190	155	230	259	1.500	2.17	.750	1.38	
B13	3140	4130	150	145	290	195	330	321	1.875	2.76	.875	1.57	
"	3145	4135	150	145	290	195	330	321	1.875	2.76	.875	1.57	
B14	3155	4145	150	145	290	195	330	341	1.875	3.54	.875	1.57	
B15	315H	4155	160	145	290	195	330	341	1.875	3.54	.875	1.57	
B16	3160	4160	160	150	370	238	410	413	2.250	3.54	1.125	1.77	
"	3165	4165	160	150	370	238	410	413	2.250	3.54	1.125	1.77	
Note 6	316H	416H	200	150	370	238	410	413	2.250	3.54	1.125	1.77	
B17	3170	4170	200	275	380	335	430	477	2.750	3.54	1.375	2.17	
"	3175	4175	200	275	380	335	430	477	2.750	3.54	1.375	2.17	
B18	3180	4180	220	320	420	380	470	527	3.125	4.33	1.500	2.56	
"	3185	4185	220	320	420	380	470	527	3.125	4.33	1.500	2.56	
B19	3190	4190	250	380	480	440	530	620	3.625	5.31	1.750	2.76	
"	3195	4195	250	380	480	440	530	620	3.625	5.31	1.750	2.76	
B20	3205	4205	250	360	440	440	530	678	3.875	6.50	1.750	3.23	
B21	3215	4215	265	395	480	475	580	708	4.250	6.50	1.875	3.23	
B22	3225	4225	280	420	540	520	620	752	4.625	6.50	2.125	3.23	
B23	3235	4235	300	460	580	560	670	839	5.000	7.87	2.250	4.13	
B24	3245	4245	335	480	630	580	720	877	5.500	7.87	2.500	4.13	
B25	3255	4255	375	520	670	630	780	1040	6.250	9.45	3.125	5.12	
B26	3265	4265	400	590	770	700	880	1150	6.625	11.81	3.125	5.12	
B27	3275	4275	540	420	1050	1040	1160	1462	7.000	13.0	3.500	5.91	

DARALI(TM)	SM-CYCLO®	Ctr. Ht.	Foot Print				Length	Output Shaft		Input Shaft	
B Series	1000 Series		C	E	F	M	N	L1	D	L	D'
A90	1900	290	240	560	560	620	740	4.250	6.69	1.875	3.15
	1905	290	240	560	560	620	740	4.250	6.69	1.875	3.15
A91	1910	325	250	630	600	690	851	4.675	8.28	2.125	3.54
	1915	325	250	630	600	690	851	4.675	8.28	2.125	3.54
A92	1920	420	330	800	810	880	1110	5.500	9.84	2.750	4.72
	1925	420	330	800	810	880	1110	5.500	9.84	2.750	4.72
A93	1930	540	420	1050	1040	1160	1462	7.000	13	3.500	5.91
	1935	540	420	1050	1040	1160	1462	7.000	13	3.500	5.91

Note 1 & 2: The output shaft length (L=1.97") of B09 is 15 mm longer than 3090/5/7 and 4090/5/7 (L=1.38"). The overall length (L1=217mm) is therefore also 15 mm longer.

Note 3 & 4: The output shaft length (L=1.97") of B10 is 15 mm longer than 3100/5 and 4100/5 (L=1.38"). The overall length (L1=223mm) is therefore also 15 mm longer.

Note 5 & 6: As compared to their sibling frame sizes, these three frame sizes have the same foot print, same shaft diameter (both input and output), and the same shaft length (both input and output). Dimensionally, the only difference as compared to their sibling frame sizes is the shaft center height.

DARALI(tm) is the registered trademark of DARALI GROUP

SM-Cyclo(tm) is the registered trademark of Sumitomo Machinery Coporation of America