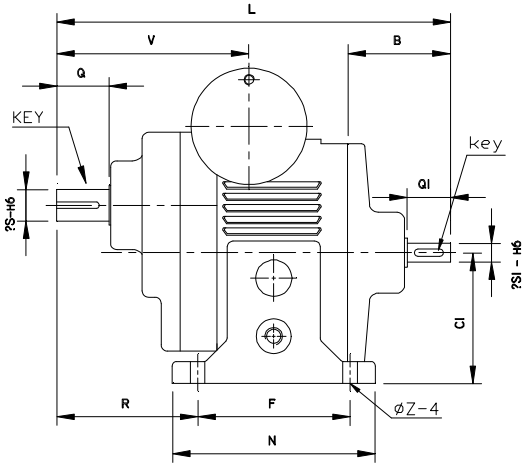
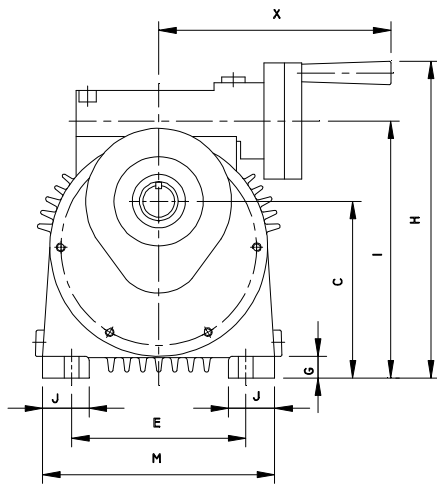


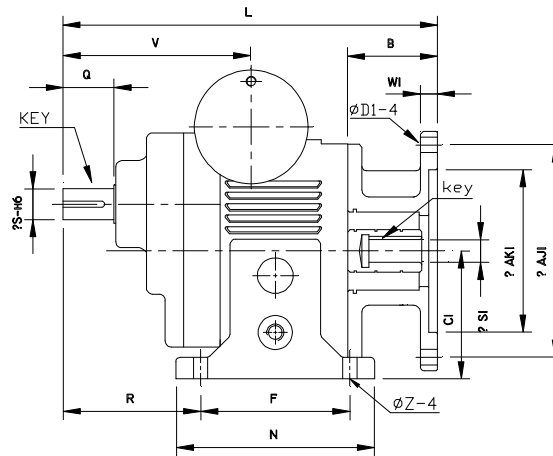
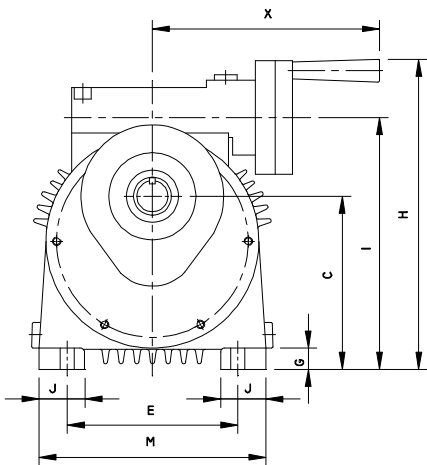
PRODUCT SPECIFICATION - AR, ARQ, ARM

Variator w/ 2.5:1 or 5:1 Helical Reducer Output

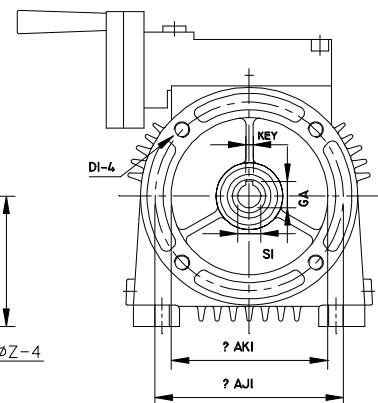
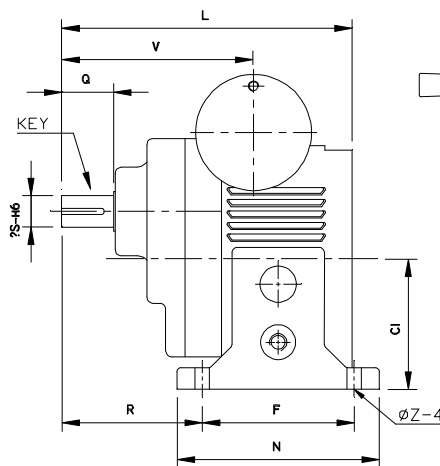
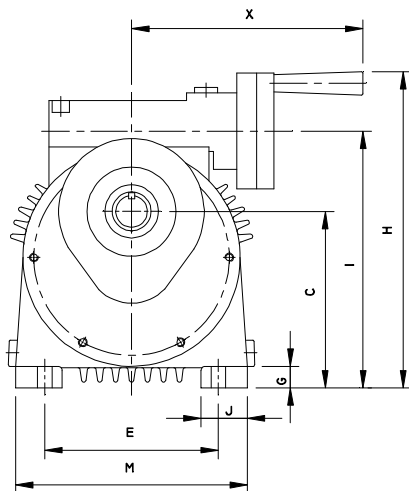
05AR, 1AR, 2AR, 3AR, 5AR



05ARQ, 1ARQ, 2ARQ, 3ARQ, 5ARQ



05ARM, 1ARM, 2ARM, 3ARM, 5ARM



PRODUCT SPECIFICATION - AR, ARQ, ARM

Variator w/ 2.5:1 or 5:1 Helical Reducer Output

05AR, 1AR, 2AR, 3AR, 5AR

Frame Size	Dimension in mm														Dimension in inch						Wt. (lb)		
	B	C	C1	E	F	G	H	I	J	L	M	N	R	V	X	Z	Slow Speed Shaft			High Speed Shaft			
	S	Q	KEY	S1	Q1	key																	
05 AR	71	135	90	120	105	15	218	177	32	256	160	140	81	121	160	10	0.750	1.18	3/16 x 3/16	0.500	1.18	1/8 x 1/8	
1 AR	94	160	106	160	125	15	248	208	38	321	186	150	104	137	160	12	1.000	1.38	1/4 x 1/4	0.750	1.18	3/16 x 3/16	
2 AR	124	190	125	180	140	18	313	246	48	391	232	165	126	157	172	12	1.250	1.77	1/4 x 1/4	0.875	1.57	3/16 x 3/16	
3 AR	161	224	150	245	230	20	378	298	51	477	300	270	132	203	210	14	1.625	2.36	3/8 x 3/8	1.125	1.97	1/4 x 1/4	
5AR	161	224	150	245	230	20	378	298	51	477	300	270	132	203	210	14	1.625	2.36	3/8 x 3/8	1.125	1.97	1/4 x 1/4	

05ARQ, 1ARQ, 2ARQ, 3ARQ, 5ARQ

Frame Size	Dimension in mm														Dimension in inch							Wt. (lb)				
	B	C	C1	E	F	G	H	I	J	L	M	N	R	V	X	Z	Slow Speed Shaft			Quill Style NEMA C-Face Adapter						
	S	Q	KEY	D1	W1	AJ1	AK1	S1	key																	
05 ARQ	63	135	90	120	105	15	218	177	32	248	160	140	81	121	160	10	0.750	1.18	3/16 x 3/16	0.39	0.32	5.875	4.500	0.625	3/16 x 3/16	
1 ARQ	80	160	106	160	125	15	248	208	38	306	186	150	104	137	160	12	1.000	1.38	1/4 x 1/4	0.39	0.51	5.875	4.500	0.875	3/16 x 3/16	
2 ARQ	80	190	125	180	140	18	313	246	48	346	232	165	126	157	172	12	1.250	1.77	1/4 x 1/4	0.51	0.75	7.250	8.500	1.125	1/4 x 1/4	
3 ARQ	97	224	150	245	230	20	378	298	51	413	300	270	132	203	210	14	1.625	2.36	3/8 x 3/8	0.51	0.87	7.250	8.500	1.375	5/16 x 5/16	
5 ARQ	97	224	150	245	230	20	378	298	51	413	300	270	132	203	210	14	1.625	2.36	3/8 x 3/8	0.51	0.87	7.250	8.500	1.375	5/16 x 5/16	

05ARM, 1ARM, 2ARM, 3ARM, 5ARM

Frame Size	Dimension in mm														Dimension in inch							Wt. (lb)			
	C	C1	E	F	G	H	I	J	L	M	N	R	V	X	Z	IEC D-Flange Adapter					Slow Speed Shaft				
	D1	AJ1	AK1	S1	GA	key	S	Q	KEY																
05 ARM	135	90	120	105	15	218	177	32	185	160	140	81	121	160	10	M8	130	110	14	16.5	5	0.750	1.18	3/16 x 3/16	
1 ARM	160	106	160	125	15	248	208	38	227	186	150	104	137	160	12	M10	165	130	19	22.4	6	1.000	1.38	1/4 x 1/4	
2 ARM	190	125	180	140	18	313	246	48	267	232	165	126	157	172	12	M10	165	130	24	28	8	1.250	1.77	1/4 x 1/4	
3 ARM	224	150	245	230	20	378	298	51	316	300	270	132	203	210	14	M12	215	180	28	31	8	1.625	2.36	3/8 x 3/8	
5 ARM	224	150	245	230	20	378	298	51	316	300	270	132	203	210	14	M12	215	180	28	31	8	1.625	2.36	3/8 x 3/8	