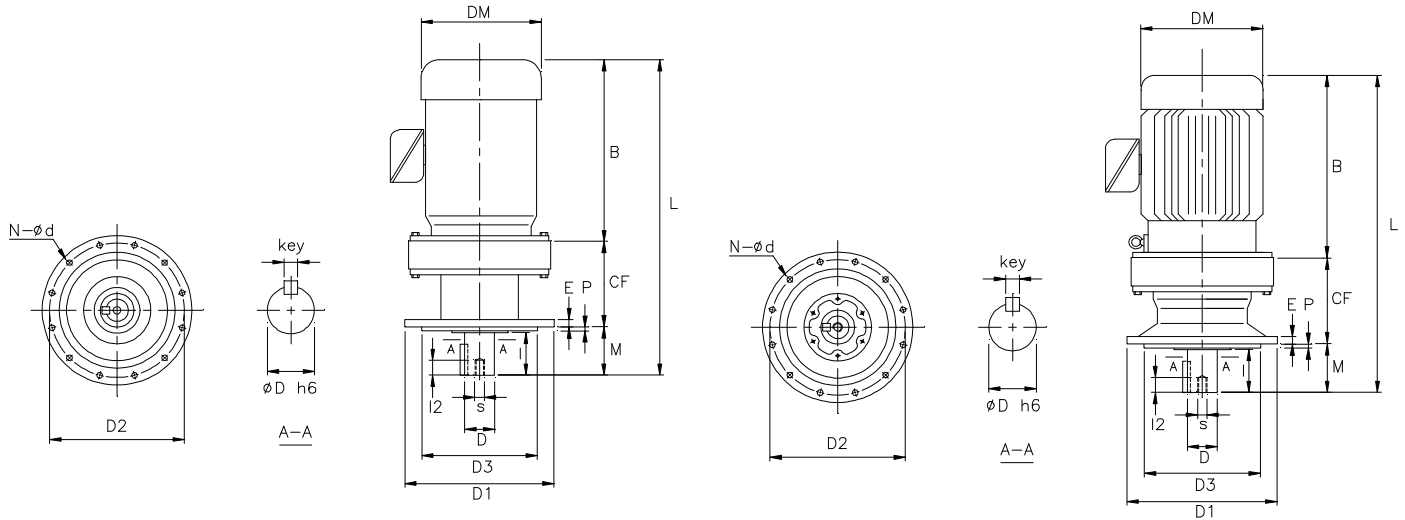


INTEGRAL GEARMOTOR - MV

1 inch = 25.4 mm
All dimensions listed are for reference only.
Contact factory for certified dimensions.

INCH SHAFT - SINGLE STAGE



B07-MV ~ B12-MV

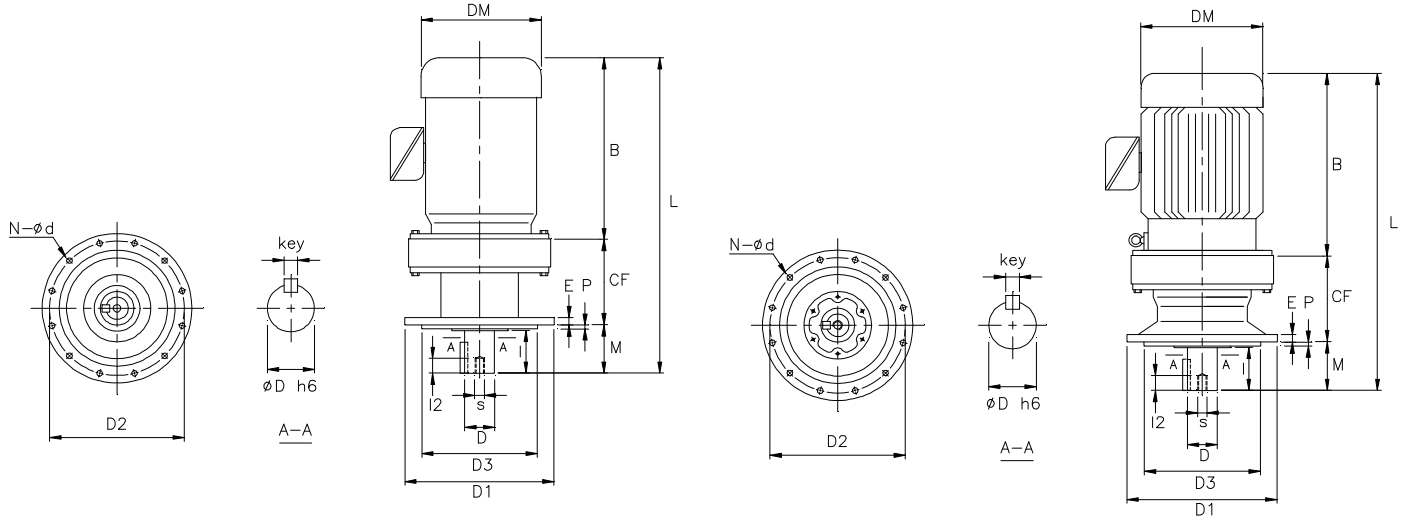
B13-MV ~ B14-MV

FRAME SIZE	Dim in mm													Dim. in inch					Wt (lb)											
	B	CF	DM	D1	D2	D3	E	L	M	N	d	P	D	I	Key	s	I2													
B07-(1/8M)V	218	58	144	120	102	80	8	310	34				.500	0.98	1/8 x 1/8 x .79	M6	12	18												
B08-(1/8M)V	218	56	144	160	134	110	9	316	42	4	11	3	.750	1.18	3/16 x 3/16 x 1.06	M6	12	20												
B08-(1/4M)V	218	56	144					316	42									29												
B08-(1/2M)V	238	56	162					336	42									37												
B09-(1/8M)V	218	94	144	160	134	110	9	375	63	4	11	3	1.125	1.97	1/4 x 1/4 x 1.18	M8	18	37												
B09-(1/4M)V	218	94	144					375	63									46												
B09-(1/2M)V	238	94	162					395	63									35												
B09-(1M)V	248	94	177					405	63									62												
B10-(1/8M)V	204	108	144	160	134	110	9	375	63	4	11	3	1.125	1.97	1/4 x 1/4 x 1.18	M8	18	42												
B10-(1/4M)V	204	108	144					375	63									51												
B10-(1/2M)V	224	108	162					395	63									62												
B10-(1M)V	234	108	177					405	63									66												
B10-(2M)V	270	108	200					441	63									86												
B10-(3M)V	301	108	219					472	63									106												
B11-(1/2M)V	244	117	162	210	180	140	13	430	69	6	11	4	1.500	2.17	3/8 x 3/8 x 1.77	M10	18	86												
B11-(1M)V	254	117	177					440	69									90												
B11-(2M)V	287	117	200					473	69									110												
B11-(3M)V	319	117	219					505	69									110												
B11-(5M)V	349	117	238					535	69									157												
B12-(1/2M)V	244	117	162	210	180	140	13	430	69	6	11	4	1.500	2.17	3/8 x 3/8 x 1.77	M10	18	90												
B12-(1M)V	254	117	177					440	69									94												
B12-(2M)V	287	117	200					473	69									114												
B12-(3M)V	319	117	219					505	69									114												
B12-(5M)V	349	117	238					535	69									161												
B13-(1M)V	250	164	177					260	230									200	15	490	76	6	11	4	1.875	2.76	1/2 x 1/2 x 2.17	M10	18	132
B13-(2M)V	290	164	200	530	76	152																								
B13-(3M)V	320	164	219	560	76	172																								
B13-(5M)V	350	164	238	590	76	198																								
B13-(8M)V	395	164	273	635	76	238																								
B13-(10M)V	435	164	273	675	76	260																								
B14-(1M)V	250	164	177	260	230	200	15			510	96	6	11	4	1.875	3.54	1/2 x 1/2 x 2.17			M10	18									137
B14-(2M)V	290	164	200							550	96																			157
B14-(3M)V	320	164	219					580	96	176																				
B14-(5M)V	350	164	238					610	96	203																				
B14-(8M)V	395	164	273					655	96	243																				
B14-(10M)V	435	164	273					695	96	265																				

INTEGRAL GEARMOTOR - MV

1 inch = 25.4 mm
All dimensions listed are for reference only.
Contact factory for certified dimensions.

METRIC SHAFT - SINGLE STAGE



B07-MV ~ B12-MV

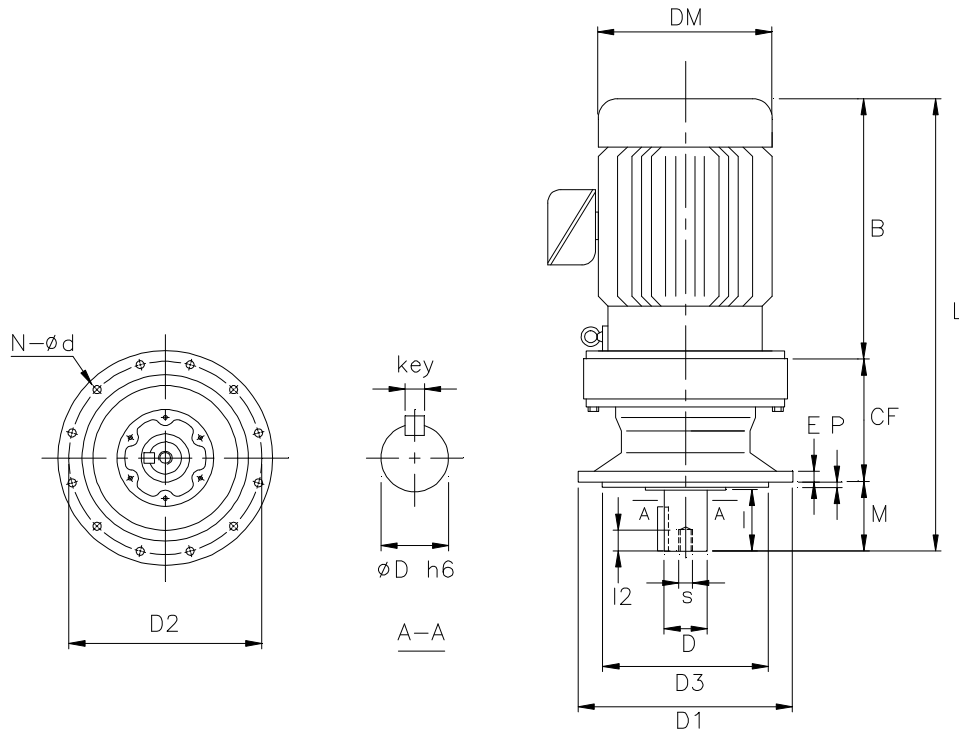
B13-MV ~ B14-MV

FRAME SIZE	Dim. in mm													Output Shaft				Wt (kg)
	B	CF	DM	D1	D2	D3	E	L	M	N	d	P	D	I	Key	s	I2	
B07-(1/8M)V	218	58	144	120	102	80	8	310	34				14	25	5 x 5 x 20	M6	12	8
B08-(1/8M)V	218	56	144					316	42									9
B08-(1/4M)V	218	56	144	160	134	110	9	316	42	4	11	3	18	30	6 x 6 x 25	M6	12	13
B08-(1/2M)V	238	56	162					336	42									17
B09-(1/8M)V	218	94	144					375	63									17
B09-(1/4M)V	218	94	144	160	134	110	9	375	63	4	11	3	28	50	8 x 7 x 32	M8	18	21
B09-(1/2M)V	238	94	162					395	63									16
B09-(1M)V	248	94	177					405	63									28
B10-(1/8M)V	204	108	144					375	63									19
B10-(1/4M)V	204	108	144					375	63									23
B10-(1/2M)V	224	108	162	160	134	110	9	395	63	4	11	3	28	50	8 x 7 x 32	M8	18	28
B10-(1M)V	234	108	177					405	63									30
B10-(2M)V	270	108	200					441	63									39
B10-(3M)V	301	108	219					472	63									48
B11-(1/2M)V	244	117	162					430	69									39
B11-(1M)V	254	117	177					440	69									41
B11-(2M)V	287	117	200	210	180	140	13	473	69	6	11	4	38	55	10 x 8 x 50	M10	18	50
B11-(3M)V	319	117	219					505	69									50
B11-(5M)V	349	117	238					535	69									71
B12-(1/2M)V	244	117	162					430	69									41
B12-(1M)V	254	117	177					440	69									43
B12-(2M)V	287	117	200	210	180	140	13	473	69	6	11	4	38	55	10 x 8 x 50	M10	18	52
B12-(3M)V	319	117	219					505	69									52
B12-(5M)V	349	117	238					535	69									73
B13-(1M)V	250	164	177					490	76									60
B13-(2M)V	290	164	200					530	76									69
B13-(3M)V	320	164	219	260	230	200	15	560	76	6	11	4	50	70	14 x 9 x 56	M10	18	78
B13-(5M)V	350	164	238					590	76									90
B13-(8M)V	395	164	273					635	76									108
B13-(10M)V	435	164	273					675	76									118
B14-(1M)V	250	164	177					510	96									62
B14-(2M)V	290	164	200					550	96									71
B14-(3M)V	320	164	219	260	230	200	15	580	96	6	11	4	50	90	14 x 9 x 80	M10	18	80
B14-(5M)V	350	164	238					610	96									92
B14-(8M)V	395	164	273					655	96									110
B14-(10M)V	435	164	273					695	96									120

INTEGRAL GEARMOTOR - MV

1 inch = 25.4 mm
All dimensions listed are for reference only.
Contact factory for certified dimensions.

INCH SHAFT - SINGLE STAGE



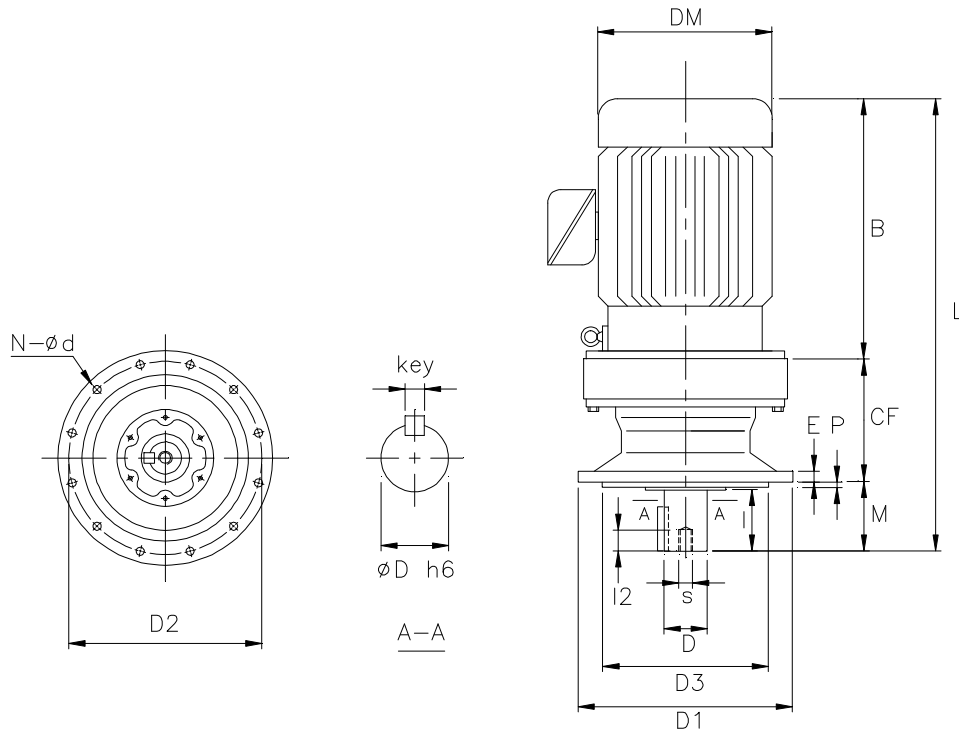
B15-MV ~ B19-MV

FRAME SIZE	Dim. in mm													Dim. in inch				Wt (lb)
	B	CF	DM	D1	D2	D3	E	L	M	N	d	P	D	I	Key	s	I2	
B15-(2M)V	290	164	220					550	96									159
B15-(3M)V	320	164	219					580	96									179
B15-(5M)V	350	164	238	260	230	200	15	610	96	6	11	4	1.875	3.54	1/2 x 1/2 x 2.95	M10	18	205
B15-(8M)V	395	164	273					655	96									245
B15-(10M)V	435	164	273					695	96									269
B15-(15M)V	460	164	334					720	96									397
B16-(2M)V	292	219	200					600	89									243
B16-(3M)V	322	219	219					630	89									265
B16-(5M)V	352	219	238	340	310	270	20	660	89	6	11	4	2.250	3.54	1/2 x 1/2 x 2.95	M10	18	291
B16-(8M)V	397	219	273					705	89									331
B16-(10M)V	437	219	273					745	89									357
B16-(15M)V	462	219	334					770	89									452
B16-(20M)V	507	219	334					815	89									507
B17-(3M)V	323	258	219					675	94									359
B17-(5M)V	353	258	238					705	94									381
B17-(8M)V	398	258	273					750	94									419
B17-(10M)V	436	258	273	400	360	316	22	788	94	8	14	5	2.750	3.54	5/8 x 5/8 x 3.15	M12	24	448
B17-(15M)V	508	258	334					860	94									540
B17-(20M)V	553	258	334					905	94									591
B17-(25M)V	573	258	382					925	94									739
B17-(30M)V	573	258	382					925	94									739
B18-(5M)V	356	279	238					745	110									470
B18-(8M)V	401	279	273					790	110									507
B18-(10M)V	439	279	273					828	110									536
B18-(15M)V	511	279	334	430	390	345	22	900	110	8	18	5	3.125	4.33	3/4 x 3/4 x 3.74	M12	24	624
B18-(20M)V	556	279	334					945	110									668
B18-(25M)V	576	279	382					965	110									794
B18-(30M)V	576	279	382					965	110									794
B19-(8M)V	395	320	273					860	145									679
B19-(10M)V	435	320	273					900	145									705
B19-(15M)V	505	320	334	490	450	400	30	970	145	12	18	6	3.625	5.31	7/8 x 7/8 x 4.92	M20	34	794
B19-(20M)V	550	320	334					1015	145									888
B19-(25M)V	570	320	382					1035	145									985
B19-(30M)V	570	320	382					1035	145									985

INTEGRAL GEARMOTOR - MV

1 inch = 25.4 mm
All dimensions listed are for reference only.
Contact factory for certified dimensions.

METRIC SHAFT - SINGLE STAGE



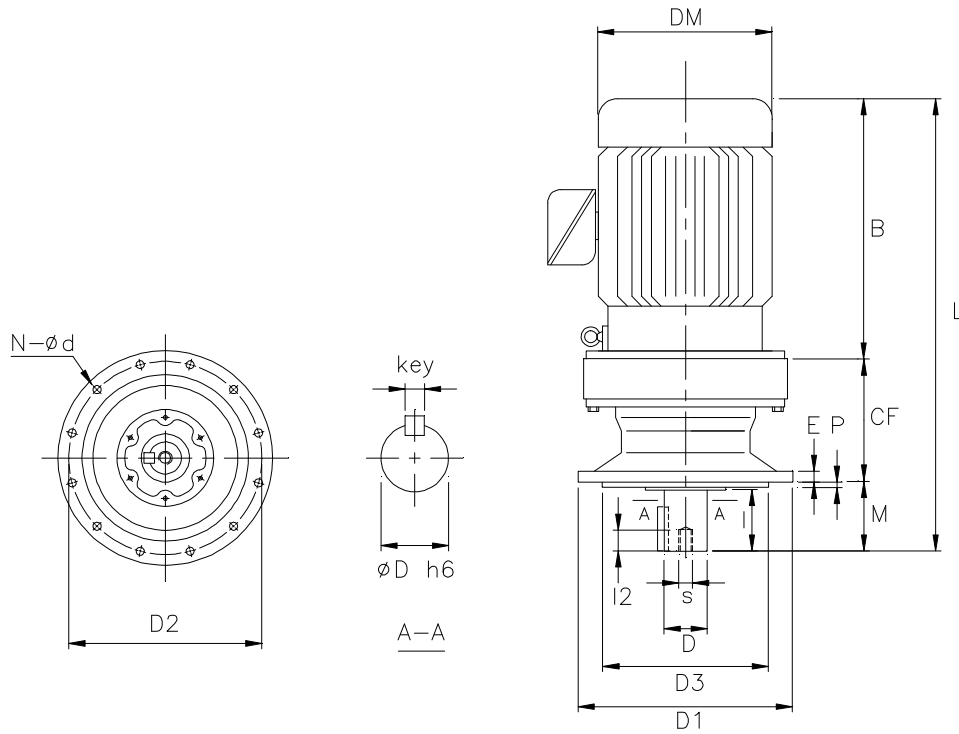
B15-MV ~ B19-MV

FRAME SIZE	Dim. in mm													Output Shaft				Wt (kg)
	B	CF	DM	D1	D2	D3	E	L	M	N	d	P	D	I	Key	s	I2	
B15-(2M)V	290	164	220					550	96									72
B15-(3M)V	320	164	219					580	96									81
B15-(5M)V	350	164	238	260	230	200	15	610	96	6	11	4	50	90	14 x 9 x 80	M10	18	93
B15-(8M)V	395	164	273					655	96									111
B15-(10M)V	435	164	273					695	96									122
B15-(15M)V	460	164	334					720	96									180
B16-(2M)V	292	219	200					600	89									110
B16-(3M)V	322	219	219					630	89									120
B16-(5M)V	352	219	238					660	89									132
B16-(8M)V	397	219	273	340	310	270	20	705	89	6	11	4	60	90	18 x 11 x 80	M10	18	150
B16-(10M)V	437	219	273					745	89									162
B16-(15M)V	462	219	334					770	89									205
B16-(20M)V	507	219	334					815	89									230
B17-(3M)V	323	258	219					675	94									163
B17-(5M)V	353	258	238					705	94									173
B17-(8M)V	398	258	273					750	94									190
B17-(10M)V	436	258	273	400	360	316	22	788	94	8	14	5	70	90	20 x 12 x 80	M12	24	203
B17-(15M)V	508	258	334					860	94									245
B17-(20M)V	553	258	334					905	94									268
B17-(25M)V	573	258	382					925	94									335
B17-(30M)V	573	258	382					925	94									335
B18-(5M)V	356	279	238					745	110									213
B18-(8M)V	401	279	273					790	110									230
B18-(10M)V	439	279	273					828	110									243
B18-(15M)V	511	279	334	430	390	345	22	900	110	8	18	5	80	110	22 x 14 x 100	M12	24	283
B18-(20M)V	556	279	334					945	110									303
B18-(25M)V	576	279	382					965	110									360
B18-(30M)V	576	279	382					965	110									360
B19-(8M)V	395	320	273					860	145									308
B19-(10M)V	435	320	273					900	145									320
B19-(15M)V	505	320	334	490	450	400	30	970	145	12	18	6	95	135	25 x 14 x 125	M20	34	360
B19-(20M)V	550	320	334					1015	145									403
B19-(25M)V	570	320	382					1035	145									447
B19-(30M)V	570	320	382					1035	145									447

INTEGRAL GEARMOTOR - MV

1 inch = 25.4 mm
All dimensions listed are for reference only.
Contact factory for certified dimensions.

INCH SHAFT - SINGLE STAGE



B20-MV ~ B23-MV

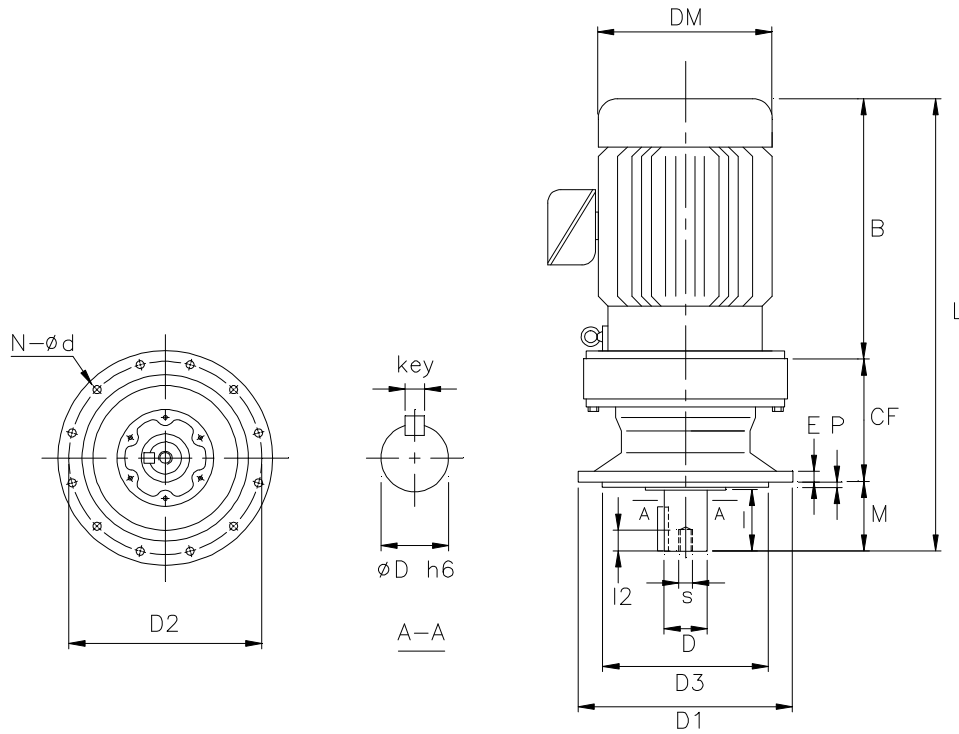
FRAME SIZE	Dim. in mm														Dim. in inch				Wt (lb)
	B	CF	DM	D1	D2	D3	E	L	M	N	d	P	D	I	Key	s	I2		
B20-(15M)V	506	298	334					1008	204									772	
B20-(20M)V	551	298	334					1053	204									816	
B20-(25M)V	571	298	382					1073	204									970	
B20-(30M)V	571	298	382	455	405	355	30	1073	204	8	22	5	3.875	6.50	1 x 1 x 6.50	M20	34	970	
B20-(40M)V	613	298	382					1115	204									992	
B20-(50M)V	673	298	420					1175	204									1113	
B20-(60M)V	673	298	420					1175	204									1113	
B21-(15M)V	504	323	334					1030	203									948	
B21-(20M)V	549	323	334					1075	203									992	
B21-(25M)V	570	323	382					1096	203									1135	
B21-(30M)V	570	323	382	490	440	390	35	1096	203	8	24	7	4.250	6.50	1 x 1 x 6.50	M20	34	1135	
B21-(40M)V	609	323	382					1135	203									1168	
B21-(50M)V	669	323	420					1195	203									1290	
B21-(60M)V	669	323	420					1195	203									1290	
B21-(75M)V	709	323	458					1235	203									1499	
B22-(25M)V	570	356	382					1136	210									1323	
B22-(30M)V	570	356	382					1136	210									1323	
B22-(40M)V	609	356	382	535	475	415	35	1175	210	8	27	10	4.625	6.50	1 1/4 x 7/8 x 6.50	M20	34	1356	
B22-(50M)V	669	356	420					1235	210									1477	
B22-(60M)V	669	356	420					1235	210									1477	
B22-(75M)V	709	356	458					1275	210									1653	
*B23-(206M)V	562	378	334					1190	250									1499	
*B23-(256M)V	602	378	382					1230	250									1539	
*B23-(306M)V	602	378	382					1230	250									1543	
*B23-(406M)V	662	378	382	570	510	450	40	1290	250	8	27	10	5.000	7.87	1 1/4 x 7/8 x 7.87	M24	41	1704	
*B23-(506M)V	662	378	420					1290	250									1709	
*B23-(606M)V	697	378	420					1325	250									1841	
*B23-(756M)V	777	378	458					1405	250									1962	

* denotes 6-pole motor (i.e. 206M = 6-pole 20 hp motor, 606M = 6-pole 60 hp motor)

INTEGRAL GEARMOTOR - MV

1 inch = 25.4 mm
All dimensions listed are for reference only.
Contact factory for certified dimensions.

METRIC SHAFT - SINGLE STAGE



B20-MV ~ B23-MV

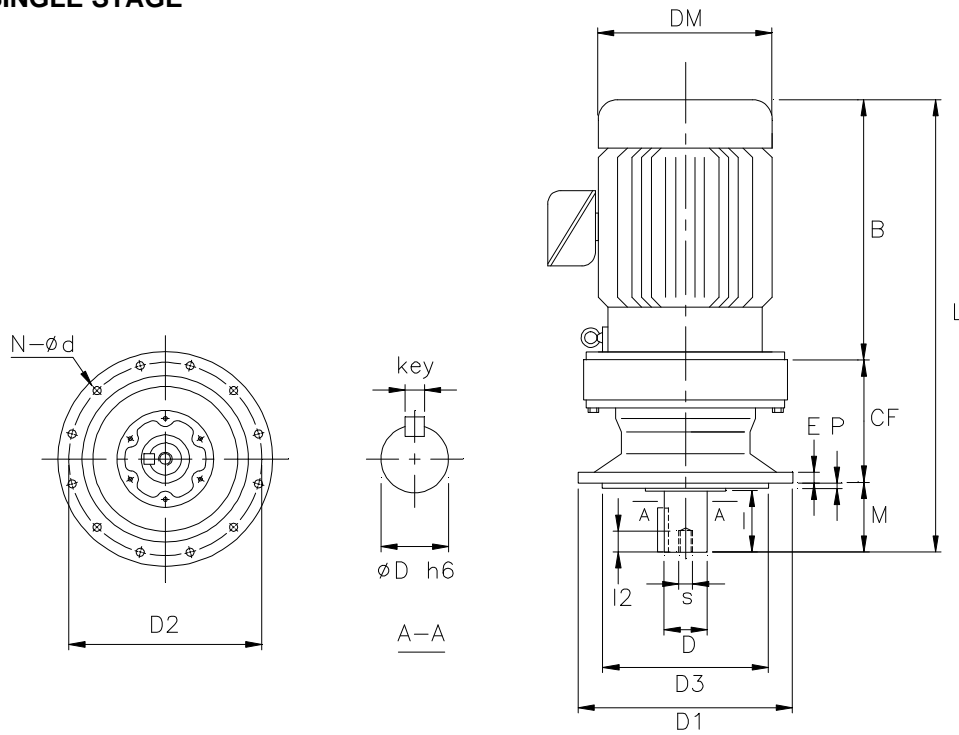
FRAME SIZE	Dim. in mm													Output Shaft				Wt (kg)
	B	CF	DM	D1	D2	D3	E	L	M	N	d	P	D	I	Key	s	I2	
B20-(15M)V	506	298	334					1008	204									350
B20-(20M)V	551	298	334					1053	204									370
B20-(25M)V	571	298	382					1073	204									440
B20-(30M)V	571	298	382	455	405	355	30	1073	204	8	22	5	100	165	28 x 16 x 165	M20	34	440
B20-(40M)V	613	298	382					1115	204									450
B20-(50M)V	673	298	420					1175	204									505
B20-(60M)V	673	298	420					1175	204									505
B21-(15M)V	504	323	334					1030	203									430
B21-(20M)V	549	323	334					1075	203									450
B21-(25M)V	570	323	382					1096	203									515
B21-(30M)V	570	323	382	490	440	390	35	1096	203	8	24	7	110	165	28 x 16 x 165	M20	34	515
B21-(40M)V	609	323	382					1135	203									530
B21-(50M)V	669	323	420					1195	203									585
B21-(60M)V	669	323	420					1195	203									585
B21-(75M)V	709	323	458					1235	203									680
B22-(25M)V	570	356	382					1136	210									600
B22-(30M)V	570	356	382					1136	210									600
B22-(40M)V	609	356	382	535	475	415	35	1175	210	8	27	10	120	165	32 x 18 x 165	M20	34	615
B22-(50M)V	669	356	420					1235	210									670
B22-(60M)V	669	356	420					1235	210									670
B22-(75M)V	709	356	458					1275	210									750
*B23-(206M)V	562	378	334					1190	250									680
*B23-(256M)V	602	378	382					1230	250									698
*B23-(306M)V	602	378	382					1230	250									700
*B23-(406M)V	662	378	382	570	510	450	40	1290	250	8	27	10	130	200	32 x 18 x 200	M24	41	773
*B23-(506M)V	662	378	420					1290	250									775
*B23-(606M)V	697	378	420					1325	250									835
*B23-(756M)V	777	378	458					1405	250									890

* denotes 6-pole motor (i.e. 206M = 6-pole 20 hp motor, 606M = 6-pole 60 hp motor)

INTEGRAL GEARMOTOR - MV

1 inch = 25.4 mm
All dimensions listed are for reference only.
Contact factory for certified dimensions.

INCH SHAFT - SINGLE STAGE



B24-MV ~ B26-MV, A90-MV ~ A92-MV

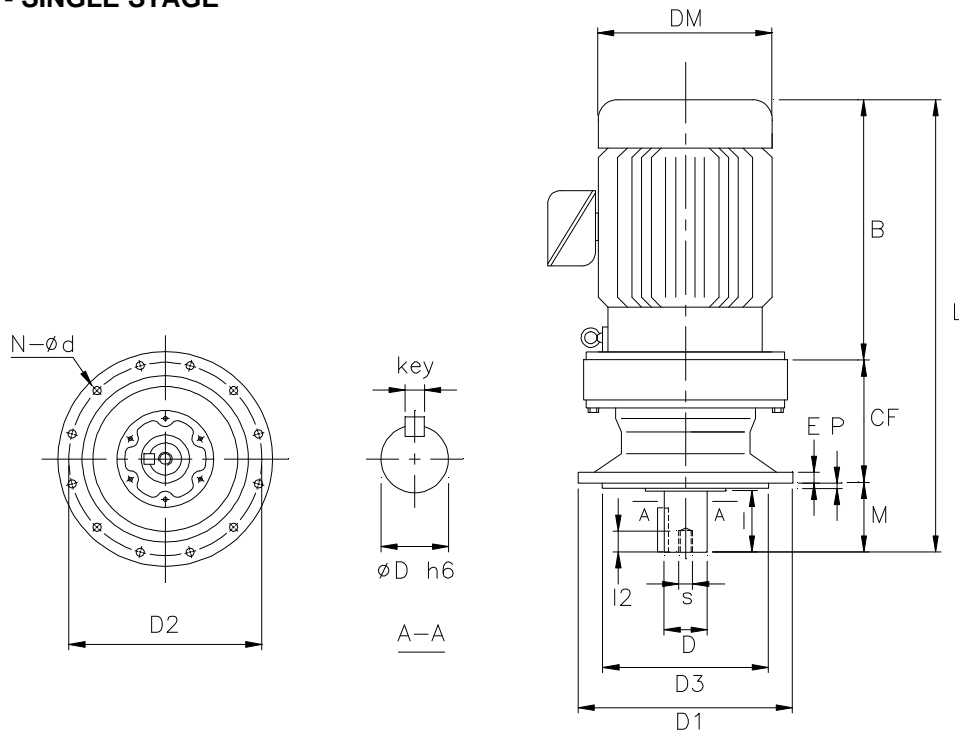
FRAME SIZE	Dim. in mm													Dim. in inch				Wt (lb)
	B	CF	DM	D1	D2	D3	E	L	M	N	d	P	D	I	Key	s	I2	
*B24-(206M)V	563	407	334					1220	250									1775
*B24-(256M)V	603	407	382					1260	250									1808
*B24-(306M)V	603	407	382					1260	250									1808
*B24-(406M)V	663	407	382	635	560	485	40	1320	250	8	33	10	5.500	7.87	1 1/4 x 7/8 x 7.87	M24	41	1973
*B24-(506M)V	663	407	420					1320	250									1973
*B24-(606M)V	698	407	420					1355	250									2116
*B24-(756M)V	778	407	458					1435	250									2222
*B25-(256M)V	485	480	382					1260	295									2536
*B25-(306M)V	485	480	382					1260	295									2542
*B25-(406M)V	550	480	382	685	610	535	45	1325	295	8	33	10	6.250	9.45	1 1/2 x 1 x 9.45	M30	49	2701
*B25-(506M)V	550	480	420					1325	295									2707
*B25-(606M)V	587	480	420					1362	295									2822
*B25-(756M)V	675	480	458					1450	295									2976
*B26-(406M)V	668	532	382					1560	360									3225
*B26-(506M)V	668	532	420	750	660	570	50	1560	360	8	39	10	6.625	11.81	1.75 x 1.25 x 11.8	M30	49	3230
*B26-(606M)V	708	532	420					1600	360									3391
A90-(15M)V	474	380	316					1044	190									1025
A90-(20M)V	518	380	316					1088	190									1069
A90-(30M)V	620	380	364	580	520	455	35	1190	190	12	22	8	4.250	6.69	1 x 1 x 6.31	M20	34	1236
A90-(40M)V	681	380	418					1251	190									1323
A90-(50M)V	698	380	442					1268	190									1488
*A90-(506M)V	723	380	442					1293	190									1587
*A91-(206M)V	625	414	364					1281	242									1625
*A91-(306M)V	686	414	418					1342	242									1709
*A91-(406M)V	751	414	442	650	590	520	40	1407	242	12	22	10	4.625	8.28	1 1/4 x 7/8 x 7.88	M24	42	1874
*A91-(506M)V	751	414	442					1407	242									1962
*A91-(606M)V	918	414	485					1574	242									2039
*A91-(756M)V	1071	414	558					1727	242									2425
*A92-(306M)V	697	601	418					1550	252									2888
*A92-(406M)V	770	601	442					1623	252									3042
*A92-(506M)V	770	601	442	880	800	680	50	1623	252	12	33	10	5.500	9.84	1 1/4 x 7/8 x 9.66	M30	52	3153
*A92-(606M)V	925	601	485					1778	252									3219
*A92-(756M)V	1073	601	558					1926	252									3505

* denotes 6-pole motor (i.e. 206M = 6-pole 20 hp motor, 606M = 6-pole 60 hp motor)

INTEGRAL GEARMOTOR - MV

1 inch = 25.4 mm
All dimensions listed are for reference only.
Contact factory for certified dimensions.

METRIC SHAFT - SINGLE STAGE



B24-MV ~ B26-MV, A90-MV ~ A92-MV

FRAME SIZE	Dim. in mm											Output Shaft					Wt (kg)	
	B	CF	DM	D1	D2	D3	E	L	M	N	d	P	D	I	Key	s		I2
*B24-(206M)V	563	407	334					1220	250									805
*B24-(256M)V	603	407	382					1260	250									820
*B24-(306M)V	603	407	382					1260	250									820
*B24-(406M)V	663	407	382	635	560	485	40	1320	250	8	33	10	140	200	36 x 20 x 200	M24	41	895
*B24-(506M)V	663	407	420					1320	250									895
*B24-(606M)V	698	407	420					1355	250									960
*B24-(756M)V	778	407	458					1435	250									1008
*B25-(256M)V	485	480	382					1260	295									1150
*B25-(306M)V	485	480	382					1260	295									1153
*B25-(406M)V	550	480	382	685	610	535	45	1325	295	8	33	10	160	240	40 x 22 x 240	M30	49	1225
*B25-(506M)V	550	480	420					1325	295									1228
*B25-(606M)V	587	480	420					1362	295									1280
*B25-(756M)V	675	480	458					1450	295									1350
*B26-(406M)V	668	532	382					1560	360									1463
*B26-(506M)V	668	532	420	750	660	570	50	1560	360	8	39	10	170	300	40 x 22 x 300	M30	49	1465
*B26-(606M)V	708	532	420					1600	360									1538
A90-(15M)V	474	380	316					1044	190									465
A90-(20M)V	518	380	316					1088	190									485
A90-(30M)V	620	380	364	580	520	455	35	1190	190	12	22	8	110	170	28 x 18 x 155	M20	34	560
A90-(40M)V	681	380	418					1251	190									600
A90-(50M)V	698	380	442					1268	190									675
*A90-(506M)V	723	380	442					1293	190									720
*A91-(206M)V	625	414	364					1281	242									737
*A91-(306M)V	686	414	418					1342	242									775
*A91-(406M)V	751	414	442	650	590	520	40	1407	242	12	22	10	120	210	32 x 20 x 195	M24	42	850
*A91-(506M)V	751	414	442					1407	242									890
*A91-(606M)V	918	414	485					1574	242									925
*A91-(756M)V	1071	414	558					1727	242									1100
*A92-(306M)V	697	601	418					1550	252									1310
*A92-(406M)V	770	601	442					1623	252									1380
*A92-(506M)V	770	601	442	880	800	680	50	1623	252	12	33	10	140	250	35 x 22 x 230	M30	52	1430
*A92-(606M)V	925	601	485					1778	252									1460
*A92-(756M)V	1073	601	558					1926	252									1590

* denotes 6-pole motor (i.e. 206M = 6-pole 20 hp motor, 606M = 6-pole 60 hp motor)