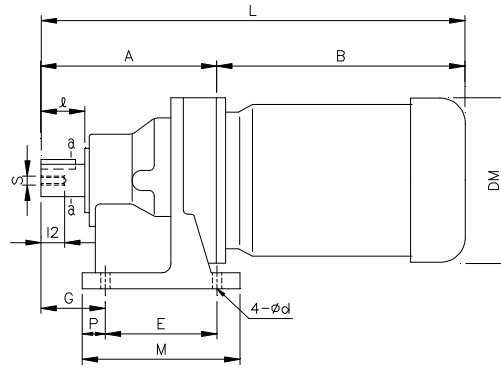
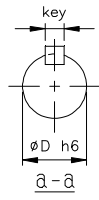
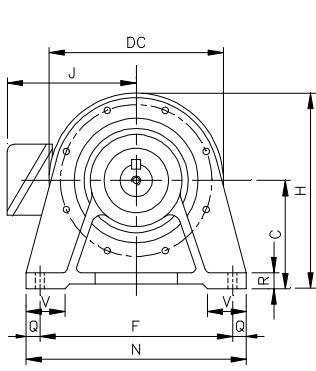


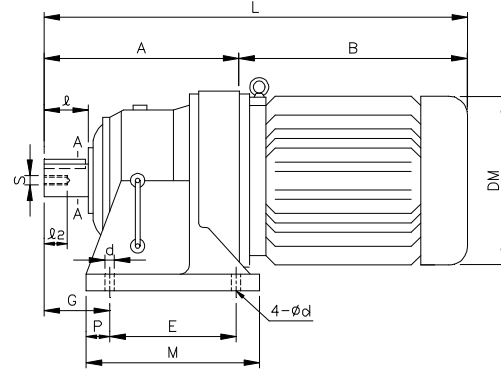
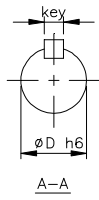
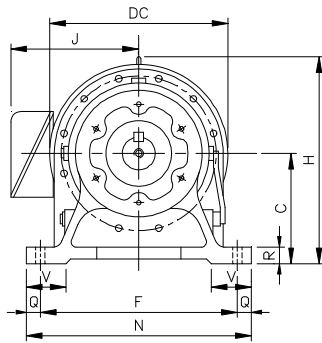
# INTEGRAL GEARMOTOR - MH

1 inch = 25.4 mm  
All dimensions listed are for reference only.  
Contact factory for certified dimensions.

## INCH SHAFT - SINGLE STAGE



B07-MH ~ B12-MH



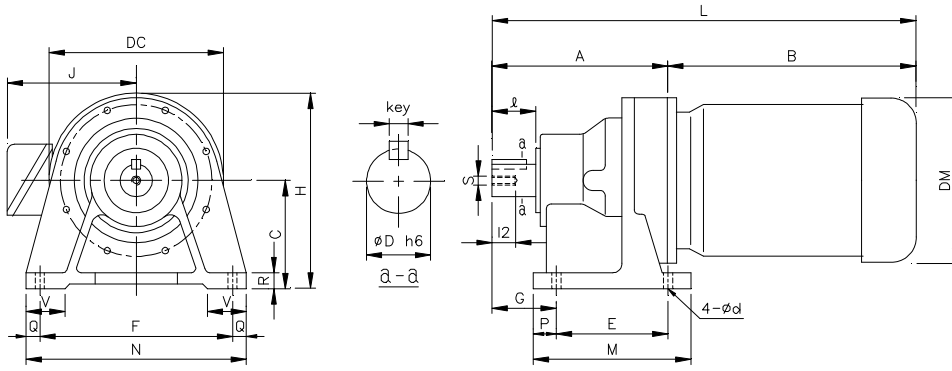
B13-MH ~ B14-MH

FRAME SIZE	Dim. in mm																	Dim. in inch					Wt (lb)	
	A	B	C	DC	DM	E	F	G	H	J	L	M	N	P	Q	R	V	d	Output Shaft					
	D	I	Key			s	I2																	
B07-(1/8M)H	92	218	80	110	144	60	120	41	135	115	310	84	144	12	12	12	35	9	.500	0.98	1/8 x 1/8 x .79	M6	12	18
B08-(1/8M)H	98	218			144					115	316													20
B08-(1/4M)H	98	218	80	110	144	60	120	47	135	115	316	84	144	12	12	12	35	9	.750	1.18	3/16 x 3/16 x 1.06	M6	12	29
B08-(1/2M)H	98	238			162					125	336													37
B09-(1/8M)H	157	218			144					115	375													37
B09-(1/4M)H	157	218	100	150	144	90	150	75	175	115	375	130	180	15	15	17	40	11	1.125	1.97	1/4 x 1/4 x 1.18	M8	18	46
B09-(1/2M)H	157	238			162					125	395													57
B09-(1M)H	157	248			177					137	405													62
B10-(1/8M)H	171	204			144					115	375													42
B10-(1/4M)H	171	204			144					115	375													51
B10-(1/2M)H	171	224	100	150	162	90	150	75	175	125	395	135	180	15	15	17	40	11	1.125	1.97	1/4 x 1/4 x 1.18	M8	18	62
B10-(1M)H	171	234			177					137	405													66
B10-(2M)H	171	270			200					150	441													86
B10-(3M)H	171	301			219					173	472													106
B11-(1/2M)H	186	244			162					125	430													86
B11-(1M)H	186	254			177					137	440													90
B11-(2M)H	186	287	120	204	200	115	190	82	222	150	473	155	230	20	20	21	55	14	1.500	2.17	3/8 x 3/8 x 1.77	M10	18	110
B11-(3M)H	186	319			219					173	505													130
B11-(5M)H	186	349			238					182	535													157
B12-(1/2M)H	186	244			162					125	430													90
B12-(1M)H	186	254			177					137	440													94
B12-(2M)H	186	287	140	204	200	115	190	82	242	150	473	155	230	20	20	21	55	14	1.500	2.17	3/8 x 3/8 x 1.77	M10	18	114
B12-(3M)H	186	319			219					173	505													134
B12-(5M)H	186	349			238					182	535													161
B13-(1M)H	240	250			177					137	490													132
B13-(2M)H	240	290			200					150	530													152
B13-(3M)H	240	320	150	230	219	145	290	100	265	173	560	195	330	25	20	27	65	18	1.875	2.76	1/2 x 1/2 x 2.17	M10	18	172
B13-(5M)H	240	350			238					182	590													198
B13-(8M)H	240	395			273					218	635													238
B13-(10M)H	240	435			273					218	675													260
B14-(1M)H	260	250			177					137	510													137
B14-(2M)H	260	290			200					150	550													157
B14-(3M)H	260	320	150	230	219	145	290	120	265	173	580	195	330	25	20	27	65	18	1.875	3.54	1/2 x 1/2 x 2.17	M10	18	176
B14-(5M)H	260	350			238					182	610													203
B14-(8M)H	260	395			273					218	655													243
B14-(10M)H	260	435			273					218	695													265

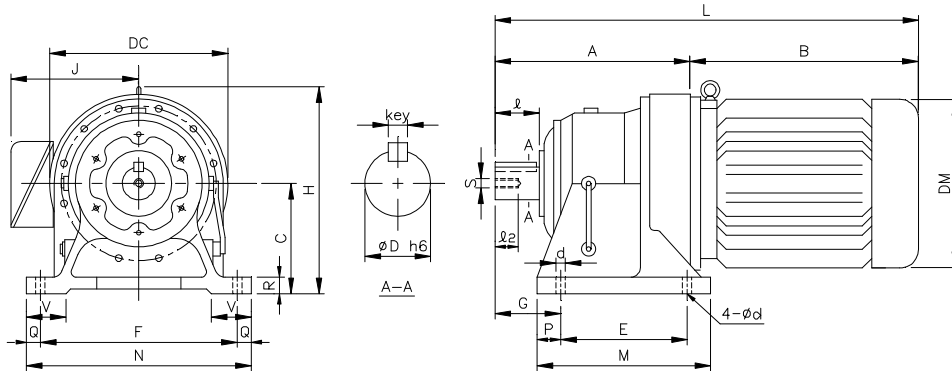
# INTEGRAL GEARMOTOR - MH

1 inch = 25.4 mm  
All dimensions listed are for reference only.  
Contact factory for certified dimensions.

## METRIC SHAFT - SINGLE STAGE



B07-MH ~ B12-MH



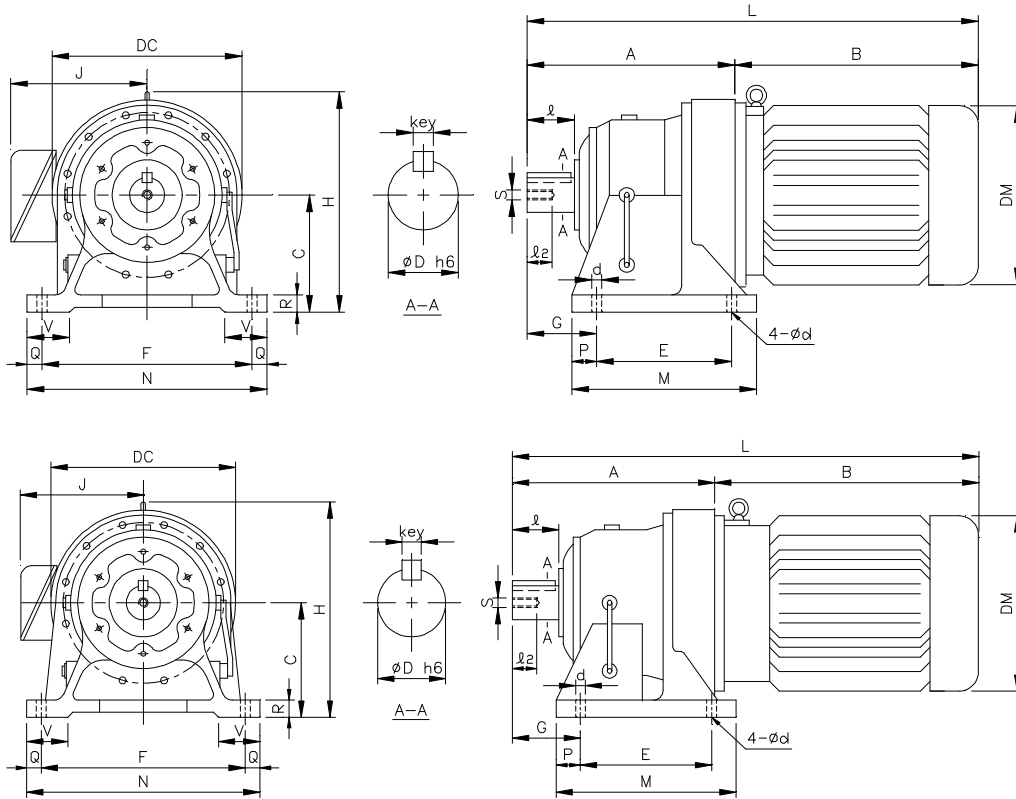
B13-MH ~ B14-MH

FRAME SIZE	Dim. in mm																	Dim. in mm				Wt (kg)				
	A	B	C	DC	DM	E	F	G	H	J	L	M	N	P	Q	R	V	d	Output Shaft							
																		D	I	Key			s	I2		
B07-(1/8M)H	92	218	80	110	144	60	120	41	135	115	310	84	144	12	12	12	35	9	14	25	5 x 5 x 20		M6	12	8	
B08-(1/8M)H	98	218			144					115	316															9
B08-(1/4M)H	98	218	80	110	144	60	120	47	135	115	316	84	144	12	12	12	35	9	18	30	6 x 6 x 25		M6	12	13	
B08-(1/2M)H	98	238			162					125	336															17
B09-(1/8M)H	157	218			144					115	375															17
B09-(1/4M)H	157	218	100	150	144	90	150	75	175	115	375	130	180	15	15	17	40	11	28	50	8 x 7 x 32		M8	18	21	
B09-(1/2M)H	157	238			162					125	395															26
B09-(1M)H	157	248			177					137	405															28
B10-(1/8M)H	171	204			144					115	375															19
B10-(1/4M)H	171	204			144					115	375															23
B10-(1/2M)H	171	224	100	150	162	90	150	75	175	125	395	135	180	15	15	17	40	11	28	50	8 x 7 x 32		M8	18	28	
B10-(1M)H	171	234			177					137	405															30
B10-(2M)H	171	270			200					150	441															39
B10-(3M)H	171	301			219					173	472															48
B11-(1/2M)H	186	244			162					125	430															39
B11-(1M)H	186	254			177					137	440															41
B11-(2M)H	186	287	120	204	200	115	190	82	222	150	473	155	230	20	20	21	55	14	38	55	10 x 8 x 50		M10	18	50	
B11-(3M)H	186	319			219					173	505															59
B11-(5M)H	186	349			238					182	535															71
B12-(1/2M)H	186	244			162					125	430															41
B12-(1M)H	186	254			177					137	440															43
B12-(2M)H	186	287	140	204	200	115	190	82	242	150	473	155	230	20	20	21	55	14	38	55	10 x 8 x 50		M10	18	52	
B12-(3M)H	186	319			219					173	505															61
B12-(5M)H	186	349			238					182	535															73
B13-(1M)H	240	250			177					137	490															60
B13-(2M)H	240	290			200					150	530															69
B13-(3M)H	240	320	150	230	219	145	290	100	265	173	560	195	330	25	20	27	65	18	50	70	14 x 9 x 56		M10	18	78	
B13-(5M)H	240	350			238					182	590															90
B13-(8M)H	240	395			273					218	635															108
B13-(10M)H	240	435			273					218	675															118
B14-(1M)H	260	250			177					137	510															62
B14-(2M)H	260	290			200					150	550															71
B14-(3M)H	260	320	150	230	219	145	290	120	265	173	580	195	330	25	20	27	65	18	50	90	14 x 9 x 80		M10	18	80	
B14-(5M)H	260	350			238					182	610															92
B14-(8M)H	260	395			273					218	655															110
B14-(10M)H	260	435			273					218	695															120

# INTEGRAL GEARMOTOR - MH

1 inch = 25.4 mm  
 All dimensions listed are for reference only.  
 Contact factory for certified dimensions.

## INCH SHAFT - SINGLE STAGE



B15-MH ~ B18-MH

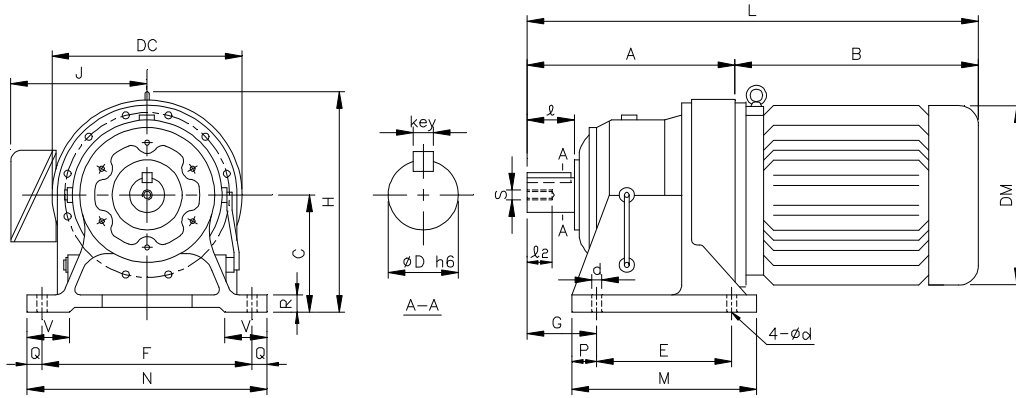
B19-MH

FRAME SIZE	Dim. in mm																	Dim. in inch					Wt (lb)	
	A	B	C	DC	DM	E	F	G	H	J	L	M	N	P	Q	R	V	d	Output Shaft					
																		D	I	Key		s		I2
B15-(2M)H	260	290			220					150	550							18	1.875	3.54	1/2 x 1/2 x 2.95	M10	18	159
B15-(3M)H	260	320			219					173	580													179
B15-(5M)H	260	350	160	230	238	145	290	120	275	182	610	195	330	25	20	27	70	18	1.875	3.54	1/2 x 1/2 x 2.95	M10	18	205
B15-(8M)H	260	395			273					218	655													245
B15-(10M)H	260	435			273					218	695													269
B15-(15M)H	260	460			334					256	720													366
B16-(2M)H	308	292			200					150	600													243
B16-(3M)H	308	322			219					173	630													265
B16-(5M)H	308	352			238					182	660													291
B16-(8M)H	308	397	160	318	273	150	370	139	319	218	705	238	410	44	20	30	75	18	2.250	3.54	1/2 x 1/2 x 2.95	M10	18	331
B16-(10M)H	308	437			273					218	745													357
B16-(15M)H	308	462			334					256	770													452
B16-(20M)H	308	507			334					256	815													507
B17-(3M)H	352	323			219					173	675													359
B17-(5M)H	352	353			238					182	705													381
B17-(8M)H	352	398			273					218	750													419
B17-(10M)H	352	436	200	362	273	275	380	125	381	218	788	335	430	30	25	32	80	22	2.750	3.54	5/8 x 5/8 x 3.15	M12	24	448
B17-(15M)H	352	508			334					256	860													540
B17-(20M)H	352	553			334					256	905													591
B17-(25M)H	352	573			382					301	925													739
B17-(30M)H	352	573			382					301	925													739
B18-(5M)H	389	356			238					182	745													470
B18-(8M)H	389	401			273					218	790													507
B18-(10M)H	389	439			273					218	828													536
B18-(15M)H	389	511	220	390	334	320	420	145	415	256	900	380	470	30	25	33	85	22	3.125	4.33	3/4 x 3/4 x 3.74	M12	24	624
B18-(20M)H	389	556			334					256	945													679
B18-(25M)H	389	576			382					301	965													794
B18-(30M)H	389	576			382					301	965													794
B19-(8M)H	465	395			273					218	860													679
B19-(10M)H	465	435			273					218	900													705
B19-(15M)H	465	505	250	451	334	380	480	170	476	256	970	440	530	30	25	40	90	26	3.625	5.31	7/8 x 7/8 x 4.92	M20	34	794
B19-(20M)H	465	550			334					256	1015													888
B19-(25M)H	465	570			382					301	1035													985
B19-(30M)H	465	570			382					301	1035													985

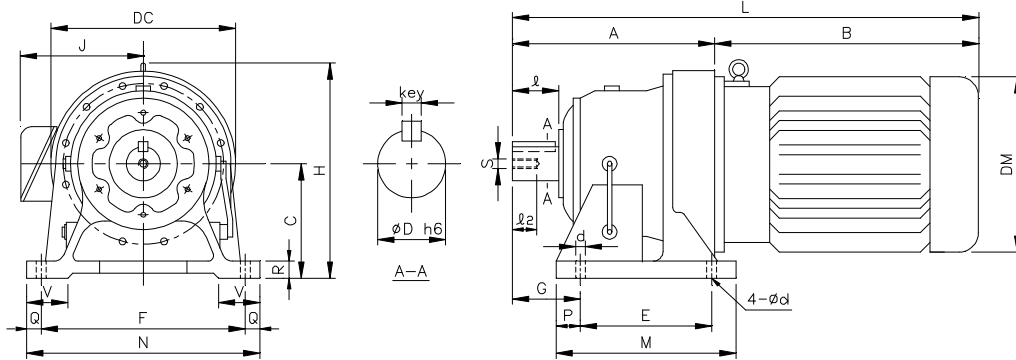
# INTEGRAL GEARMOTOR - MH

1 inch = 25.4 mm  
 All dimensions listed are for reference only.  
 Contact factory for certified dimensions.

## METRIC SHAFT - SINGLE STAGE



B15-MH ~ B18-MH



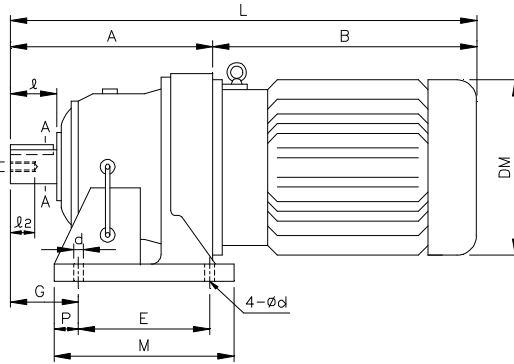
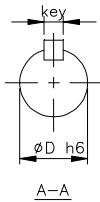
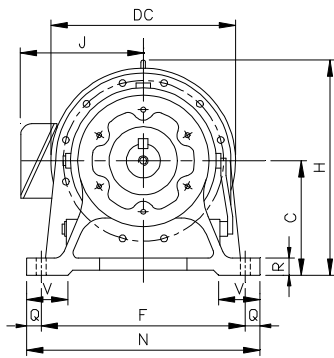
B19-MH

FRAME SIZE	Dim. in mm																Dim. in mm					Wt (kg)												
	A	B	C	DC	DM	E	F	G	H	J	L	M	N	P	Q	R	V	d	Output Shaft															
																		D	I	Key			s	l2										
B15-(2M)H	260	290			220					150	550																							72
B15-(3M)H	260	320			219					173	580																							81
B15-(5M)H	260	350	160	230	238	145	290	120	275	182	610	195	330	25	20	27	70	18	50	90														93
B15-(8M)H	260	395			273					218	655																							111
B15-(10M)H	260	435			273					218	695																							122
B15-(15M)H	260	460			334					256	720																							166
B16-(2M)H	308	292			200					150	600																							110
B16-(3M)H	308	322			219					173	630																							120
B16-(5M)H	308	352			238					182	660																							132
B16-(8M)H	308	397	160	318	273	150	370	139	319	218	705	238	410	44	20	30	75	18	60	90													150	
B16-(10M)H	308	437			273					218	745																							162
B16-(15M)H	308	462			334					256	770																							205
B16-(20M)H	308	507			334					256	815																							230
B17-(3M)H	352	323			219					173	675																							163
B17-(5M)H	352	353			238					182	705																							173
B17-(8M)H	352	398			273					218	750																							190
B17-(10M)H	352	436	200	362	273	275	380	125	381	218	788	335	430	30	25	32	80	22	70	90													203	
B17-(15M)H	352	508			334					256	860																							245
B17-(20M)H	352	553			334					256	905																							268
B17-(25M)H	352	573			382					301	925																							335
B17-(30M)H	352	573			382					301	925																							335
B18-(5M)H	389	356			238					182	745																							213
B18-(8M)H	389	401			273					218	790																							230
B18-(10M)H	389	439			273					218	828																							243
B18-(15M)H	389	511	220	390	334	320	420	145	415	256	900	380	470	30	25	33	85	22	80	110													283	
B18-(20M)H	389	556			334					256	945																							308
B18-(25M)H	389	576			382					301	965																							360
B18-(30M)H	389	576			382					301	965																							360
B19-(8M)H	465	395			273					218	860																							308
B19-(10M)H	465	435			273					218	900																							320
B19-(15M)H	465	505	250	451	334	380	480	170	476	256	970	440	530	30	25	40	90	26	95	135													360	
B19-(20M)H	465	550			334					256	1015																							403
B19-(25M)H	465	570			382					301	1035																							447
B19-(30M)H	465	570			382					301	1035																							447

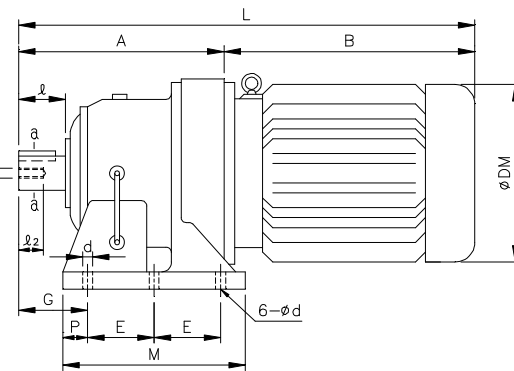
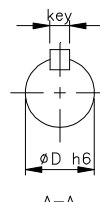
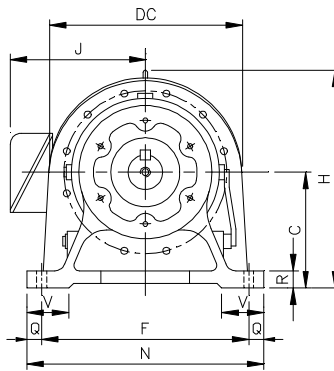
# INTEGRAL GEARMOTOR - MH

1 inch = 25.4 mm  
 All dimensions listed are for reference only.  
 Contact factory for certified dimensions.

## INCH SHAFT - SINGLE STAGE



B20-MH ~ B23-MH



A90-MH ~ A92-MH  
 (w/ 6 Mounting Holes)

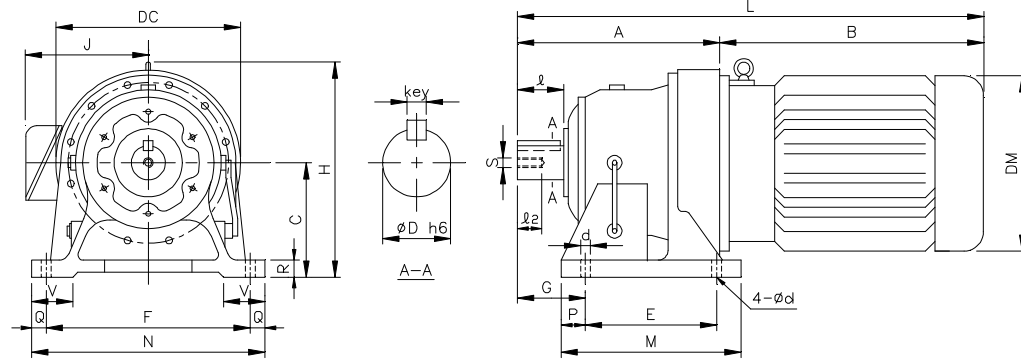
FRAME SIZE	Dim. in mm																	Dim. in inch					Wt (lb)		
	A	B	C	DC	DM	E	F	G	H	J	L	M	N	P	Q	R	V	d	Output Shaft						
																			D	I	Key	s	I2		
B20-(15M)H	502	506			334					256	1008														772
B20-(20M)H	502	551			334					256	1053														816
B20-(25M)H	502	571			382					301	1073														970
B20-(30M)H	502	571	250	471	382	360	440	215	485	301	1073	440	530	40	45	40	100	26	3.875	6.50	1 x 1 x 6.50	M20	34	970	
B20-(40M)H	502	613			382					301	1115														992
B20-(50M)H	502	673			420					334	1175														1113
B20-(60M)H	502	673			420					334	1175														1113
B21-(15M)H	526	504			334					256	1030														948
B21-(20M)H	526	549			334					256	1075														992
B21-(25M)H	526	570			382					301	1096														1135
B21-(30M)H	526	570	265	507	382	395	480	210	518	301	1096	475	580	40	50	42	110	26	4.250	6.50	1 x 1 x 6.50	M20	34	1135	
B21-(40M)H	526	609			382					301	1135														1168
B21-(50M)H	526	669			420					334	1195														1290
B21-(60M)H	526	669			420					334	1195														1290
B21-(75M)H	526	709			458					382	1235														1499
B22-(25M)H	566	570			382					301	1136														1323
B22-(30M)H	566	570			382					301	1136														1323
B22-(40M)H	566	609	280	549	382	420	540	230	554	301	1175	520	620	50	40	42	115	33	4.625	6.50	1 1/4 x 7/8 x 6.50	M20	34	1356	
B22-(50M)H	566	669			420					334	1235														1477
B22-(60M)H	566	669			420					334	1235														1477
B22-(75M)H	566	709			458					382	1275														1653
*B23-(206M)H	628	562			334					256	1190														1499
*B23-(256M)H	628	602			382					301	1230														1539
*B23-(306M)H	628	602			382					301	1230														1543
*B23-(406M)H	628	662	300	591	382	460	580	260	595	301	1290	560	670	50	45	45	120	33	5.000	7.87	1 1/4 x 7/8 x 7.87	M24	41	1704	
*B23-(506M)H	628	662			420					334	1290														1709
*B23-(606M)H	628	697			420					334	1325														1841
*B23-(756M)H	628	777			458					382	1405														1962

\* denotes 6-pole motor (i.e. 206M = 6-pole 20 hp motor, 606M = 6-pole 60 hp motor)

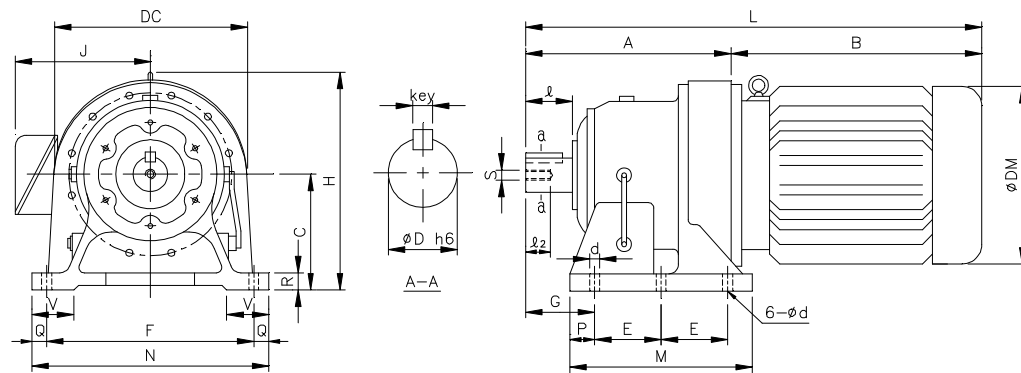
# INTEGRAL GEARMOTOR - MH

1 inch = 25.4 mm  
All dimensions listed are for reference only.  
Contact factory for certified dimensions.

## METRIC SHAFT - SINGLE STAGE



B20-MH ~ B23-MH



A90-MH ~ A92-MH  
(w/ 6 Mounting Holes)

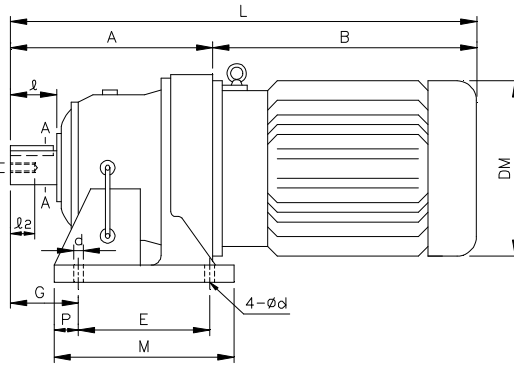
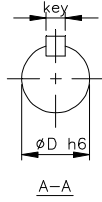
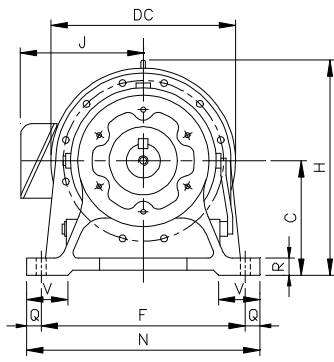
FRAME SIZE	Dim. in mm																	Output Shaft					Wt (kg)	
	A	B	C	DC	DM	E	F	G	H	J	L	M	N	P	Q	R	V	d	D	I	Key	s		l2
B20-(15M)H	502	506			334					256	1008													350
B20-(20M)H	502	551			334					256	1053													370
B20-(25M)H	502	571			382					301	1073													440
B20-(30M)H	502	571	250	471	382	360	440	215	485	301	1073	440	530	40	45	40	100	26	100	165	28 x 16 x 165	M20	34	440
B20-(40M)H	502	613			382					301	1115													450
B20-(50M)H	502	673			420					334	1175													505
B20-(60M)H	502	673			420					334	1175													505
B21-(15M)H	526	504			334					256	1030													430
B21-(20M)H	526	549			334					256	1075													450
B21-(25M)H	526	570			382					301	1096													515
B21-(30M)H	526	570	265	507	382	395	480	210	518	301	1096	475	580	40	50	42	110	26	110	165	28 x 16 x 165	M20	34	515
B21-(40M)H	526	609			382					301	1135													530
B21-(50M)H	526	669			420					334	1195													585
B21-(60M)H	526	669			420					334	1195													585
B21-(75M)H	526	709			458					382	1235													680
B22-(25M)H	566	570			382					301	1136													600
B22-(30M)H	566	570			382					301	1136													600
B22-(40M)H	566	609	280	549	382	420	540	230	554	301	1175	520	620	50	40	42	115	33	120	165	32 x 18 x 165	M20	34	615
B22-(50M)H	566	669			420					334	1235													670
B22-(60M)H	566	669			420					334	1235													670
B22-(75M)H	566	709			458					382	1275													750
*B23-(206M)H	628	562			334					256	1190													680
*B23-(256M)H	628	602			382					301	1230													698
*B23-(306M)H	628	602			382					301	1230													700
*B23-(406M)H	628	662	300	591	382	460	580	260	595	301	1290	560	670	50	45	45	120	33	130	200	32 x 18 x 200	M24	41	773
*B23-(506M)H	628	662			420					334	1290													775
*B23-(606M)H	628	697			420					334	1325													835
*B23-(756M)H	628	777			458					382	1405													890

\* denotes 6-pole motor (i.e. 206M = 6-pole 20 hp motor, 606M = 6-pole 60 hp motor)

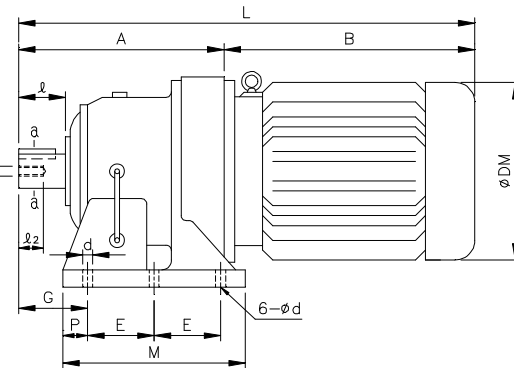
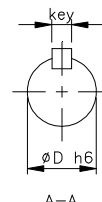
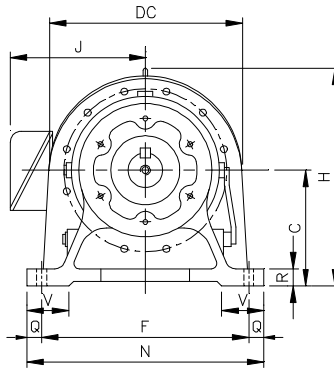
# INTEGRAL GEARMOTOR - MH

1 inch = 25.4 mm  
 All dimensions listed are for reference only.  
 Contact factory for certified dimensions.

## INCH SHAFT - SINGLE STAGE



B24-MH ~ B26-MH



A90-MH ~ A92-MH  
 (w/ 6 Mounting Holes)

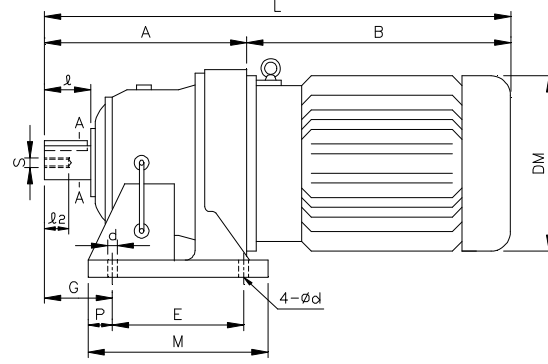
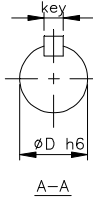
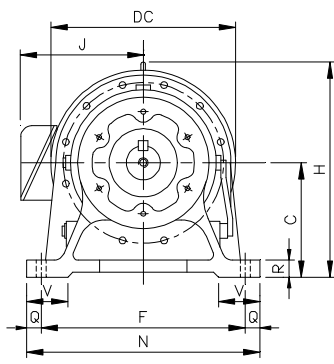
FRAME SIZE	Dim. in mm																	Dim. in inch					Wt (lb)													
	A	B	C	DC	DM	E	F	G	H	J	L	M	N	P	Q	R	V	d	Output Shaft																	
																			D	I	Key	s	I2													
*B24-(206M)H	657	563			334					256	1220																									1775
*B24-(256M)H	657	603			382					301	1260																									1808
*B24-(306M)H	657	603			382					301	1260																									1808
*B24-(406M)H	657	663	335	637	382	480	630	263	654	301	1320	580	720	50	45	45	128	39																	1973	
*B24-(506M)H	657	663			420					334	1320																									1973
*B24-(606M)H	657	698			420					334	1355																									2116
*B24-(756M)H	657	778			458					382	1435																									2222
*B25-(256M)H	775	485			382					301	1260																									2535
*B25-(306M)H	775	485			382					301	1260																									2542
*B25-(406M)H	775	550	375	703	382	520	670	320	726	301	1325	630	780	55	55	50	140	39																	2701	
*B25-(506M)H	775	550			420					334	1325																									2707
*B25-(606M)H	775	587			420					334	1362																									2822
*B25-(756M)H	775	675			458					382	1450																									2976
*B26-(406M)H	892	668			382					301	1560																									3225
*B26-(506M)H	892	668	400	772	420	590	770	390	786	334	1560	700	880	55	55	55	160	45																	3230	
*B26-(606M)H	892	708			420					334	1600																									3391
A90-(15M)H	570	474			316					235	1044																									1036
A90-(20M)H	570	518			316					235	1088																									1069
A90-(30M)H	570	620	290	505	364	240	590	215		300	1190	560	620	40	30	40	100	26																	1246	
A90-(40M)H	570	681			418					300	1251																									1323
A90-(50M)H	570	698			442					350	1268																									1499
*A90-(506M)H	570	723			442					350	1293																									1598
*A91-(206M)H	656	625			364					300	1281																									1543
*A91-(306M)H	656	686			418					300	1342																									1631
*A91-(406M)H	656	751	325	575	442	250	630	290		350	1407	600	690	50	30	40	105	26																	1797	
*A91-(506M)H	656	751			442					350	1407																									1896
*A91-(606M)H	656	918			485					350	1574																									1962
*A91-(756M)H	656	1071			558					460	1727																									2359
*A92-(306M)H	853	697			418					300	1550																									2800
*A92-(406M)H	853	770			442					350	1623																									2954
*A92-(506M)H	853	770	420	720	442	330	800	372		350	1623	810	880	75	40	50	143	39																	3042	
*A92-(606M)H	853	925			485					350	1778																									3131
*A92-(756M)H	853	1073			558					460	1926																									3417

\* denotes 6-pole motor (i.e. 206M = 6-pole 20 hp motor, 606M = 6-pole 60 hp motor)

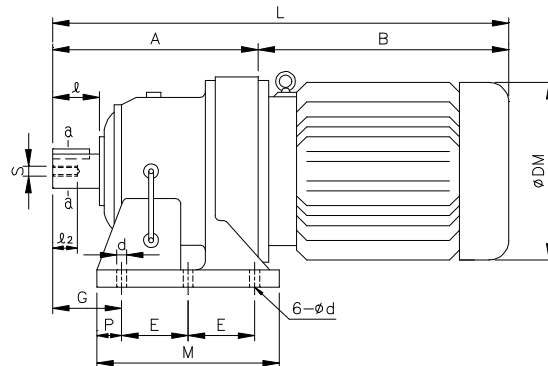
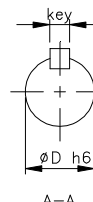
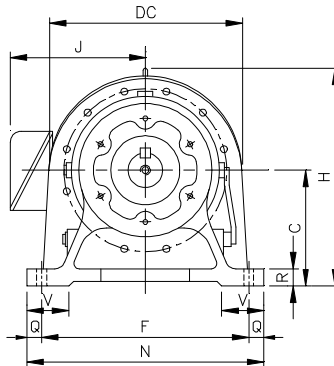
# INTEGRAL GEARMOTOR - MH

1 inch = 25.4 mm  
All dimensions listed are for reference only.  
Contact factory for certified dimensions.

## METRIC SHAFT - SINGLE STAGE



B24-MH ~ B26-MH



A90-MH ~ A92-MH  
(w/ 6 Mounting Holes)

FRAME SIZE	Dim. in mm																	Output Shaft				Wt (kg)					
	A	B	C	DC	DM	E	F	G	H	J	L	M	N	P	Q	R	V	d	D	I	Key		s	l2			
*B24-(206M)H	657	563			334					256	1220																805
*B24-(256M)H	657	603			382					301	1260																820
*B24-(306M)H	657	603			382					301	1260																820
*B24-(406M)H	657	663	335	637	382	480	630	263	654	301	1320	580	720	50	45	45	128	39	140	200	36 x 20 x 200	M24	41			895	
*B24-(506M)H	657	663			420					334	1320																895
*B24-(606M)H	657	698			420					334	1355																960
*B24-(756M)H	657	778			458					382	1435																1008
*B25-(256M)H	775	485			382					301	1260																1150
*B25-(306M)H	775	485			382					301	1260																1153
*B25-(406M)H	775	550	375	703	382	520	670	320	726	301	1325	630	780	55	55	50	140	39	160	240	40 x 22 x 240	M30	49			1225	
*B25-(506M)H	775	550			420					334	1325																1228
*B25-(606M)H	775	587			420					334	1362																1280
*B25-(756M)H	775	675			458					382	1450																1350
*B26-(406M)H	892	668			382					301	1560																1463
*B26-(506M)H	892	668	400	772	420	590	770	390	786	334	1560	700	880	55	55	55	160	45	170	300	40 x 22 x 300	M30	49			1465	
*B26-(606M)H	892	708			420					334	1600																1538
A90-(15M)H	570	474			316					235	1044																470
A90-(20M)H	570	518			316					235	1088																485
A90-(30M)H	570	620	290	505	364	240	590	215		300	1190	560	620	40	30	40	100	26	110	170	28 x 18 x 155	M20	34			565	
A90-(40M)H	570	681			418					300	1251																600
A90-(50M)H	570	698			442					350	1268																680
*A90-(506M)H	570	723			442					350	1293																725
*A91-(206M)H	656	625			364					300	1281																700
*A91-(306M)H	656	686			418					300	1342																740
*A91-(406M)H	656	751	325	575	442	250	630	290		350	1407	600	690	50	30	40	105	26	120	210	32 x 20 x 195	M24	42			815	
*A91-(506M)H	656	751			442					350	1407																860
*A91-(606M)H	656	918			485					350	1574																890
*A91-(756M)H	656	1071			558					460	1727																1070
*A92-(306M)H	853	697			418					300	1550																1270
*A92-(406M)H	853	770			442					350	1623																1340
*A92-(506M)H	853	770	420	720	442	330	800	372		350	1623	810	880	75	40	50	143	39	140	250	35 x 22 x 230	M30	52			1380	
*A92-(606M)H	853	925			485					350	1778																1420
*A92-(756M)H	853	1073			558					460	1926																1550

\* denotes 6-pole motor (i.e. 206M = 6-pole 20 hp motor, 606M = 6-pole 60 hp motor)