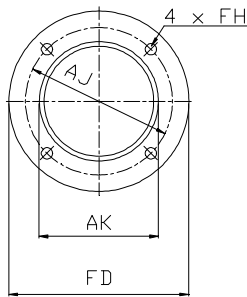
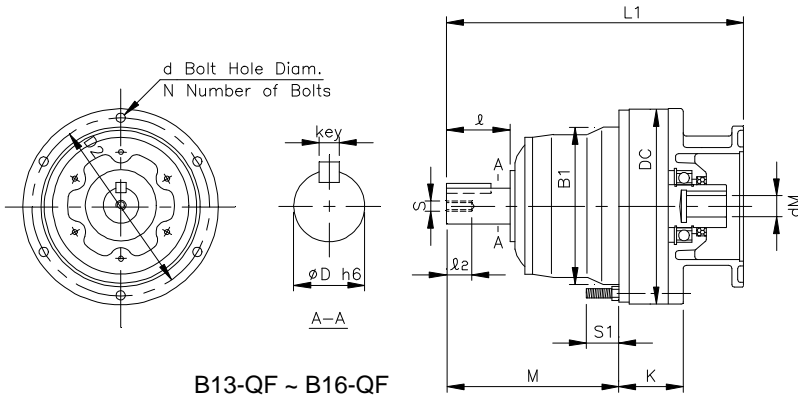
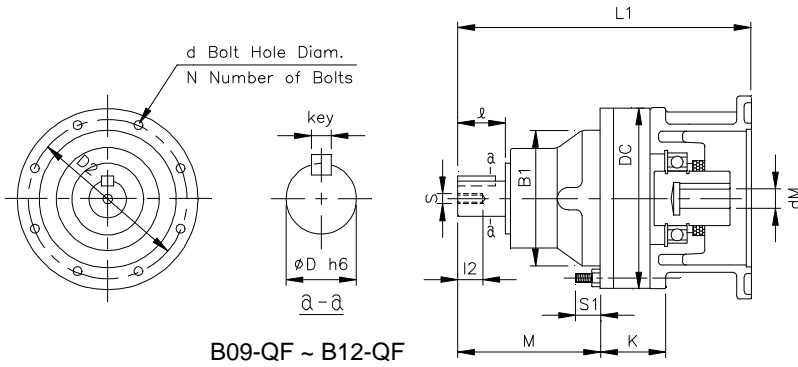


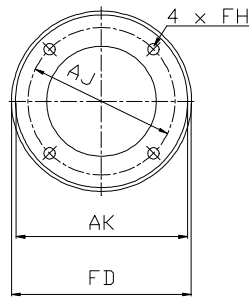
# REDUCER w/ NEMA C-Face Adapter - QF

1 inch = 25.4 mm  
All dimensions listed are for reference only.  
Contact factory for certified dimensions.

## INCH SHAFT - SINGLE STAGE - HOLLOW QUILL INPUT



NEMA  
56C, 143/145



NEMA  
182/184 & above

DARALI Frame	Motor Frame	Dim. in mm										Dim. in inch					Dim. in inch			Wt (lb)	
		B1	DC	M	K	S1	L1	D2	d	N	NEMA C-Face Adapter					Output Shaft					
											dM	AK	FD	AJ	FH	D	I	Key	s		I2
B09-QF	56C	105	150	129	38	26	241	134	9	8	0.625	4.500	6.625	5.875	0.433	1.125	1.97	1/4 x 1/4 x 1.18	M8	18	29
	143/145	105	150	129	38	26	241	134	9	8	0.875	4.500	6.625	5.875	0.433	1.125	1.97	1/4 x 1/4 x 1.18	M8	18	29
B10-QF	56C	105	150	129	56	27	247	134	9	8	0.625	4.500	6.625	5.875	0.433	1.125	1.97	1/4 x 1/4 x 1.18	M8	18	33
	143/145	105	150	129	56	27	247	134	9	8	0.875	4.500	6.625	5.875	0.433	1.125	1.97	1/4 x 1/4 x 1.18	M8	18	33
B11-QF	56C	140	204	139	61	28	264	180	11	6	0.625	4.500	6.625	5.875	0.433	1.500	2.17	3/8 x 3/8 x 1.77	M10	18	59
	143/145	140	204	139	61	28	264	180	11	6	0.875	4.500	6.625	5.875	0.433	1.500	2.17	3/8 x 3/8 x 1.77	M10	18	59
	182/184	140	204	139	61	28	278	180	11	6	1.125	8.500	8.875	7.250	0.433	1.500	2.17	3/8 x 3/8 x 1.77	M10	18	63
B12-QF	56C	140	204	139	61	28	264	180	11	6	0.625	4.500	6.625	5.875	0.433	1.500	2.17	3/8 x 3/8 x 1.77	M10	18	59
	143/145	140	204	139	61	28	264	180	11	6	0.875	4.500	6.625	5.875	0.433	1.500	2.17	3/8 x 3/8 x 1.77	M10	18	59
	182/184	140	204	139	61	28	278	180	11	6	1.125	8.500	8.875	7.250	0.433	1.500	2.17	3/8 x 3/8 x 1.77	M10	18	63
B13-QF	182/184	165	230	177	75	30	334	205	11	6	1.125	8.500	8.875	7.250	0.551	1.875	2.76	1/2 x 1/2 x 2.17	M10	18	108
	213/215	165	230	177	75	30	351	205	11	6	1.375	8.500	8.875	7.250	0.551	1.875	2.76	1/2 x 1/2 x 2.17	M10	18	113
B14-QF	182/184	165	230	197	75	30	354	205	11	6	1.125	8.500	8.875	7.250	0.551	1.875	3.54	1/2 x 1/2 x 2.17	M10	18	110
	213/215	165	230	197	75	30	371	205	11	6	1.375	8.500	8.875	7.250	0.551	1.875	3.54	1/2 x 1/2 x 2.17	M10	18	116
B15-QF	182/184	165	230	197	75	30	354	205	11	6	1.125	8.500	8.875	7.250	0.551	1.875	3.54	1/2 x 1/2 x 2.17	M10	18	115
	213/215	165	230	197	75	30	371	205	11	6	1.375	8.500	8.875	7.250	0.551	1.875	3.54	1/2 x 1/2 x 2.17	M10	18	121
B16-QF	182/184	200	318	222	102	40	405	270	14	6	1.125	8.500	8.875	7.250	0.551	2.250	3.54	1/2 x 1/2 x 2.95	M10	18	228
	213/215	200	318	222	102	40	421	270	14	6	1.375	8.500	8.875	7.250	0.551	2.250	3.54	1/2 x 1/2 x 2.95	M10	18	234