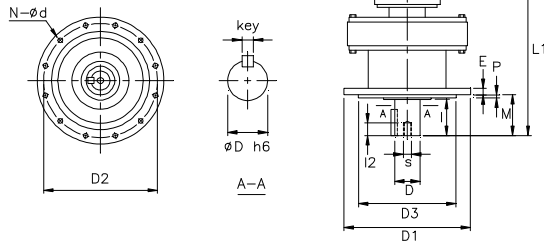


REDUCER w/ NEMA C-Face Adapter - QV

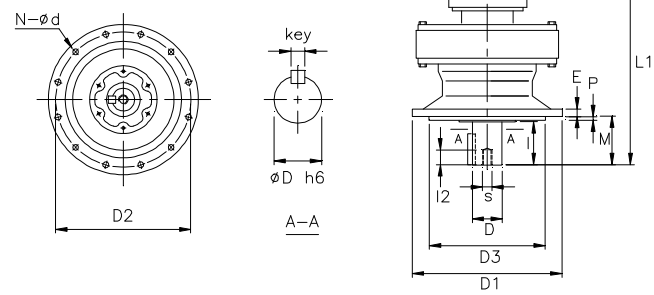
1 inch = 25.4 mm
All dimensions listed are for reference only.
Contact factory for certified dimensions.

INCH SHAFT - DOUBLE STAGE - HOLLOW QUILL INPUT

B1109-QV



B1310-QV ~ B1711-QV



DARALI Frame	Motor Frame	Dim. in mm										Dim. in inch				Dim. in inch				Wt (lb)	
		L1	D1	D2	D3	E	M	N	d	P	NEMA C-Face Adapter				Output Shaft						
		dM	AK	FD	AJ	FH	D	I	Key	s	I2	D	I	Key	s	I2					
B1109-QV	56C	336	210	180	140	13	69	6	11	4	0.625	4.500	6.625	5.875	0.433	1.500	2.17	3/8 x 3/8 x 1.77	M10	18	71
	143/145	336	210	180	140	13	69	6	11	4	0.875	4.500	6.625	5.875	0.433	1.500	2.17	3/8 x 3/8 x 1.77	M10	18	71
B1310-QV	56C	393	260	230	200	15	76	6	11	4	0.625	4.500	6.625	5.875	0.433	1.875	2.76	1/2 x 1/2 x 2.17	M10	18	124
	143/145	393	260	230	200	15	76	6	11	4	0.875	4.500	6.625	5.875	0.433	1.875	2.76	1/2 x 1/2 x 2.17	M10	18	124
B1409-QV	56C	407	260	230	200	15	96	6	11	4	0.625	4.500	6.625	5.875	0.433	1.875	3.54	1/2 x 1/2 x 2.17	M10	18	118
	143/145	407	260	230	200	15	96	6	11	4	0.875	4.500	6.625	5.875	0.433	1.875	3.54	1/2 x 1/2 x 2.17	M10	18	118
B1611-QV	56C	467	340	310	270	20	89	6	11	4	0.625	4.500	6.625	5.875	0.433	2.250	3.54	1/2 x 1/2 x 2.95	M10	18	217
	143/145	467	340	310	270	20	89	6	11	4	0.875	4.500	6.625	5.875	0.433	2.250	3.54	1/2 x 1/2 x 2.95	M10	18	217
	182/184	481	340	310	270	20	89	6	11	4	1.125	8.500	8.875	7.250	0.433	2.250	3.54	1/2 x 1/2 x 2.95	M10	18	221
B1711-QV	56C	514	400	360	316	22	94	8	14	5	0.625	4.500	6.625	5.875	0.433	2.750	3.54	5/8 x 5/8 x 3.15	M12	24	280
	143/145	514	400	360	316	22	94	8	14	5	0.875	4.500	6.625	5.875	0.433	2.750	3.54	5/8 x 5/8 x 3.15	M12	24	280
	182/184	528	400	360	316	22	94	8	14	5	1.125	8.500	8.875	7.250	0.433	2.750	3.54	5/8 x 5/8 x 3.15	M12	24	284
B1813-QV	182/184	590	430	390	345	22	110	8	18	5	1.125	8.500	8.875	7.250	0.551	3.125	4.33	3/4 x 3/4 x 3.74	M12	24	380
	213/215	701	430	390	345	22	110	8	18	5	1.375	8.500	8.875	7.250	0.551	3.125	4.33	3/4 x 3/4 x 3.74	M12	24	386
B1911-QV	56C	634	490	450	400	30	145	12	18	6	0.625	4.500	6.625	5.875	0.433	3.625	5.31	7/8 x 7/8 x 4.92	M20	34	541
	143/145	634	490	450	400	30	145	12	18	6	0.875	4.500	6.625	5.875	0.433	3.625	5.31	7/8 x 7/8 x 4.92	M20	34	541
	182/184	648	490	450	400	30	145	12	18	6	1.125	8.500	8.875	7.250	0.433	3.625	5.31	7/8 x 7/8 x 4.92	M20	34	545
B1913-QV	182/184	666	490	450	400	30	145	12	18	6	1.125	8.500	8.875	7.250	0.551	3.625	5.31	7/8 x 7/8 x 4.92	M20	34	567
	213/215	683	490	450	400	30	145	12	18	6	1.375	8.500	8.875	7.250	0.551	3.625	5.31	7/8 x 7/8 x 4.92	M20	34	573
B2011-QV	56C	675	455	405	355	30	204	8	22	5	0.625	4.500	6.625	5.875	0.433	3.875	6.50	1 x 1 x 6.50	M20	34	583
	143/145	675	455	405	355	30	204	8	22	5	0.875	4.500	6.625	5.875	0.433	3.875	6.50	1 x 1 x 6.50	M20	34	583
	182/184	689	455	405	355	30	204	8	22	5	1.125	8.500	8.875	7.250	0.433	3.875	6.50	1 x 1 x 6.50	M20	34	587
B2013-QV	182/184	718	455	405	355	30	204	8	22	5	1.125	8.500	8.875	7.250	0.551	3.875	6.50	1 x 1 x 6.50	M20	34	618
	213/215	735	455	405	355	30	204	8	22	5	1.375	8.500	8.875	7.250	0.551	3.875	6.50	1 x 1 x 6.50	M20	34	624
B2113-QV	182/184	744	490	440	390	35	203	8	24	7	1.125	8.500	8.875	7.250	0.551	4.250	6.50	1 x 1 x 6.50	M20	34	796
	213/215	761	490	440	390	35	203	8	24	7	1.375	8.500	8.875	7.250	0.551	4.250	6.50	1 x 1 x 6.50	M20	34	803
B2116-QV	182/184	772	490	440	390	35	203	8	24	7	1.125	8.500	8.875	7.250	0.551	4.250	6.50	1 x 1 x 6.50	M20	34	871
	213/215	788	490	440	390	35	203	8	24	7	1.375	8.500	8.875	7.250	0.551	4.250	6.50	1 x 1 x 6.50	M20	34	875
B2213-QV	182/184	786	535	475	415	35	210	8	27	10	1.125	8.500	8.875	7.250	0.551	4.625	6.50	1 1/4 x 7/8 x 6.50	M20	34	962
	213/215	803	535	475	415	35	210	8	27	10	1.375	8.500	8.875	7.250	0.551	4.625	6.50	1 1/4 x 7/8 x 6.50	M20	34	968
B2316-QV	182/184	875	570	510	450	40	250	8	27	10	1.125	8.500	8.875	7.250	0.551	5.000	7.87	1 1/4 x 7/8 x 7.87	M24	41	1254
	213/215	891	570	510	450	40	250	8	27	10	1.375	8.500	8.875	7.250	0.551	5.000	7.87	1 1/4 x 7/8 x 7.87	M24	41	1257
B2416-QV	182/184	913	635	560	485	40	250	8	33	10	1.125	8.500	8.875	7.250	0.551	5.500	7.87	1 1/4 x 7/8 x 7.87	M24	41	1493
	213/215	929	635	560	485	40	250	8	33	10	1.375	8.500	8.875	7.250	0.551	5.500	7.87	1 1/4 x 7/8 x 7.87	M24	41	1495
A904-QV	182/184	776	580	520	455	35	190	12	22	8	1.125	8.500	8.875	7.250	0.551	4.250	6.69	1 x 1 x 6.31	M20	34	887
	213/215	793	580	520	455	35	190	12	22	8	1.375	8.500	8.875	7.250	0.551	4.250	6.69	1 x 1 x 6.31	M20	34	896
A906-QV	182/184	802	580	520	455	35	190	12	22	8	1.125	8.500	8.875	7.250	0.551	4.250	6.69	1 x 1 x 6.31	M20	34	976
	213/215	818	580	520	455	35	190	12	22	8	1.375	8.500	8.875	7.250	0.551	4.250	6.69	1 x 1 x 6.31	M20	34	981
A916-QV	182/184	902	650	590	520	40	242	12	22	10	1.125	8.500	8.875	7.250	0.551	4.625	8.28	1 1/4 x 7/8 x 7.88	M24	42	1285
	213/215	918	650	590	520	40	242	12	22	10	1.375	8.500	8.875	7.250	0.551	4.625	8.28	1 1/4 x 7/8 x 7.88	M24	42	1290

B1813-QV ~ B2416-QV,
A904-QV ~ A916-QV

