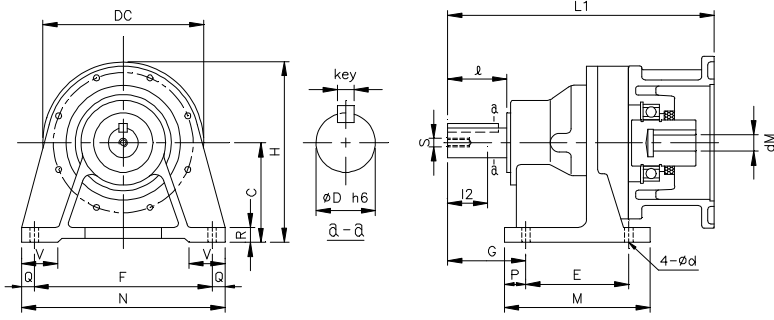


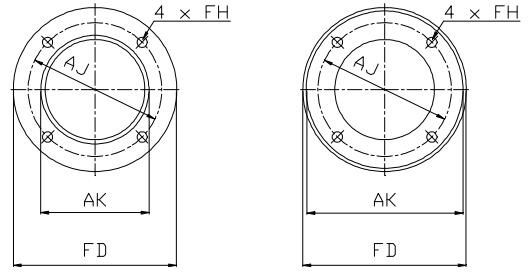
REDUCER w/ NEMA C-Face Adapter - QH

1 inch = 25.4 mm
All dimensions listed are for reference only.
Contact factory for certified dimensions.

INCH SHAFT - SINGLE STAGE - HOLLOW QUILL INPUT

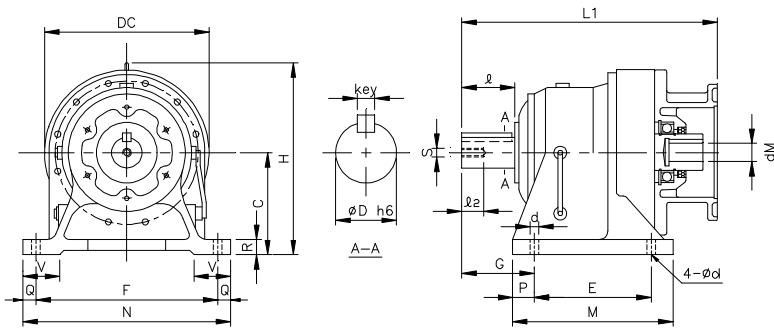


B09-QH ~ B12-QH



NEMA 56C, 143/145

NEMA 182/184 & above



B13-QH ~ B16-QH



DARALI Frame	Motor Frame	NEMA C-Face Adapter				
		dM	AK	FD	AJ	FH
B09-QH	56C	0.625	4.500	6.625	5.875	0.433
	143/145	0.875	4.500	6.625	5.875	0.433
B10-QH	56C	0.625	4.500	6.625	5.875	0.433
	143/145	0.875	4.500	6.625	5.875	0.433
B11-QH	56C	0.625	4.500	6.625	5.875	0.433
	143/145	0.875	4.500	6.625	5.875	0.433
	182/184	1.125	8.500	8.875	7.250	0.433
B12-QH	56C	0.625	4.500	6.625	5.875	0.433
	143/145	0.875	4.500	6.625	5.875	0.433
B13-QH	182/184	1.125	8.500	8.875	7.250	0.551
	213/215	1.375	8.500	8.875	7.250	0.551
	182/184	1.125	8.500	8.875	7.250	0.551
B14-QH	182/184	1.125	8.500	8.875	7.250	0.551
	213/215	1.375	8.500	8.875	7.250	0.551
B15-QH	182/184	1.125	8.500	8.875	7.250	0.551
	213/215	1.375	8.500	8.875	7.250	0.551
B16-QH	182/184	1.125	8.500	8.875	7.250	0.551
	213/215	1.375	8.500	8.875	7.250	0.551

DARALI Frame	Motor Frame	Dim in mm														Dim. in inch					Wt (lb)
		C	DC	E	F	G	H	L1	M	N	P	Q	R	V	d	D	I	Key	s	I2	
B09-QH	56C	100	150	90	150	75	175	241	130	180	15	15	17	40	11	1.125	1.97	1/4 x 1/4 x 1.18	M8	18	32
	143/145	100	150	90	150	75	175	241	130	180	15	15	17	40	11	1.125	1.97	1/4 x 1/4 x 1.18	M8	18	32
B10-QH	56C	100	150	90	150	75	175	247	135	180	15	15	17	40	11	1.125	1.97	1/4 x 1/4 x 1.18	M8	18	36
	143/145	100	150	90	150	75	175	247	135	180	15	15	17	40	11	1.125	1.97	1/4 x 1/4 x 1.18	M8	18	36
B11-QH	56C	120	204	115	190	82	222	264	155	230	20	20	21	55	14	1.500	2.17	3/8 x 3/8 x 1.77	M10	18	62
	143/145	120	204	115	190	82	222	264	155	230	20	20	21	55	14	1.500	2.17	3/8 x 3/8 x 1.77	M10	18	62
	182/184	120	204	115	190	82	222	278	155	230	20	20	21	55	14	1.500	2.17	3/8 x 3/8 x 1.77	M10	18	66
B12-QH	56C	140	204	115	190	82	242	264	155	230	20	20	21	55	14	1.500	2.17	3/8 x 3/8 x 1.77	M10	18	66
	143/145	140	204	115	190	82	242	264	155	230	20	20	21	55	14	1.500	2.17	3/8 x 3/8 x 1.77	M10	18	66
	182/184	140	204	115	190	82	242	278	155	230	20	20	21	55	14	1.500	2.17	3/8 x 3/8 x 1.77	M10	18	70
B13-QH	182/184	150	230	145	290	100	265	334	195	330	25	20	27	65	18	1.875	2.76	1/2 x 1/2 x 2.17	M10	18	111
	213/215	150	230	145	290	100	265	351	195	330	25	20	27	65	18	1.875	2.76	1/2 x 1/2 x 2.17	M10	18	117
B14-QH	182/184	150	230	145	290	120	265	354	195	330	25	20	27	65	18	1.875	3.54	1/2 x 1/2 x 2.17	M10	18	113
	213/215	150	230	145	290	120	265	371	195	330	25	20	27	65	18	1.875	3.54	1/2 x 1/2 x 2.17	M10	18	119
B15-QH	182/184	160	230	145	290	120	275	354	195	330	25	20	27	70	18	1.875	3.54	1/2 x 1/2 x 2.17	M10	18	118
	213/215	160	230	145	290	120	275	371	195	330	25	20	27	70	18	1.875	3.54	1/2 x 1/2 x 2.17	M10	18	124
B16-QH	182/184	160	318	150	370	139	319	405	238	410	44	20	30	75	18	2.250	3.54	1/2 x 1/2 x 2.95	M10	18	231
	213/215	160	318	150	370	139	319	421	238	410	44	20	30	75	18	2.250	3.54	1/2 x 1/2 x 2.95	M10	18	237