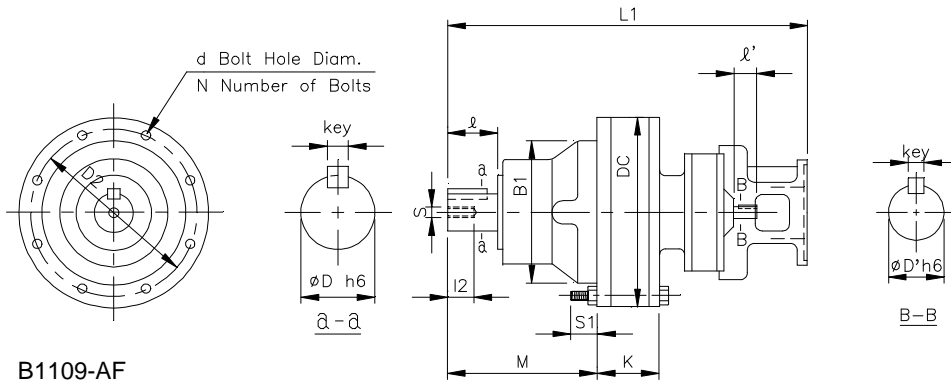


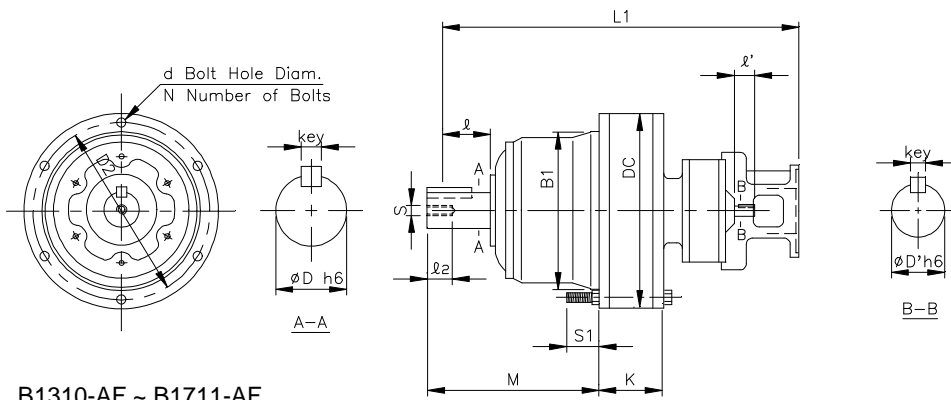
REDUCER w/ NEMA C-Face Adapter - AF

1 inch = 25.4 mm
All dimensions listed are for reference only.
Contact factory for certified dimensions.

INCH SHAFT - DOUBLE STAGE (Users Provide Own Couplings)

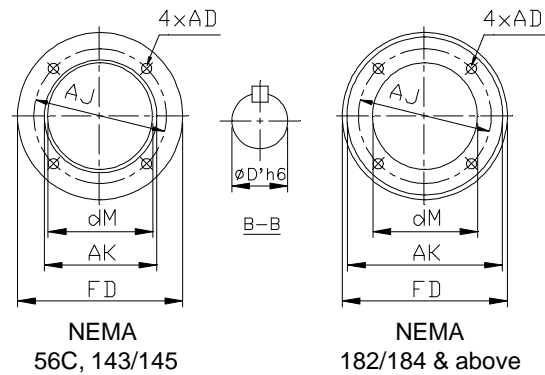


B1109-AF



B1310-AF ~ B1711-AF

DARALI Frame	Motor Frame	C-Face Adapter				
		dM	AK	FD	AJ	AD
B1109-AF	56C	3.543	4.500	6.625	5.875	0.433
	143/145	3.543	4.500	6.625	5.875	0.433
B1310-AF	56C	3.543	4.500	6.625	5.875	0.433
	143/145	3.543	4.500	6.625	5.875	0.433
B1409-AF	56C	3.543	4.500	6.625	5.875	0.433
	143/145	3.543	4.500	6.625	5.875	0.433
B1611-AF	56C	3.543	4.500	6.625	5.875	0.472
	143/145	3.543	4.500	6.625	5.875	0.472
	182/184	4.724	8.500	8.878	7.250	0.551
B1711-AF	56C	3.543	4.500	6.625	5.875	0.472
	143/145	3.543	4.500	6.625	5.875	0.472
	182/184	4.724	8.500	8.878	7.250	0.551



DARALI Frame	Motor Frame	Dim. in mm									Dim. in inch				Wt (lb)				
		B1	DC	M	K	S1	L1	D2	d	N	D	I	Key	s		I2	D'	I'	Key
B1109-AF	56C	140	204	139	61	28	379	180	11	6	1.500	2.17	3/8 x 3/8 x 1.77	M10	18	.625	.98	3/16 x 3/16 x .75	62
	143/145	140	204	139	61	28	379	180	11	6	1.500	2.17	3/8 x 3/8 x 1.77	M10	18	.625	.98	3/16 x 3/16 x .75	62
B1310-AF	56C	165	230	177	75	30	433	205	11	6	1.875	2.76	1/2 x 1/2 x 2.17	M10	18	.625	.98	3/16 x 3/16 x .75	95
	143/145	165	230	177	75	30	433	205	11	6	1.875	2.76	1/2 x 1/2 x 2.17	M10	18	.625	.98	3/16 x 3/16 x .75	95
B1409-AF	56C	165	230	197	75	30	450	205	11	6	1.875	3.54	1/2 x 1/2 x 2.17	M10	18	.625	.98	3/16 x 3/16 x .75	93
	143/145	165	230	197	75	30	450	205	11	6	1.875	3.54	1/2 x 1/2 x 2.17	M10	18	.625	.98	3/16 x 3/16 x .75	93
B1611-AF	56C	200	318	222	102	40	528	270	14	6	2.250	3.54	1/2 x 1/2 x 2.95	M10	18	.750	1.38	3/16 x 3/16 x 1.02	190
	143/145	200	318	222	102	40	528	270	14	6	2.250	3.54	1/2 x 1/2 x 2.95	M10	18	.750	1.38	3/16 x 3/16 x 1.02	190
	182/184	200	318	222	102	40	547	270	14	6	2.250	3.54	1/2 x 1/2 x 2.95	M10	18	.750	1.38	3/16 x 3/16 x 1.02	194
B1711-AF	56C	250	362	262	110	45	575	300	15	8	2.750	3.54	5/8 x 5/8 x 3.15	M12	24	.750	1.38	3/16 x 3/16 x 1.02	241
	143/145	250	362	262	110	45	575	300	15	8	2.750	3.54	5/8 x 5/8 x 3.15	M12	24	.750	1.38	3/16 x 3/16 x 1.02	241
	182/184	250	362	262	110	45	594	300	15	8	2.750	3.54	5/8 x 5/8 x 3.15	M12	24	.750	1.38	3/16 x 3/16 x 1.02	245