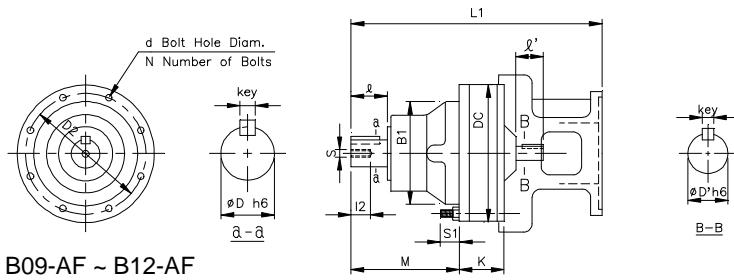


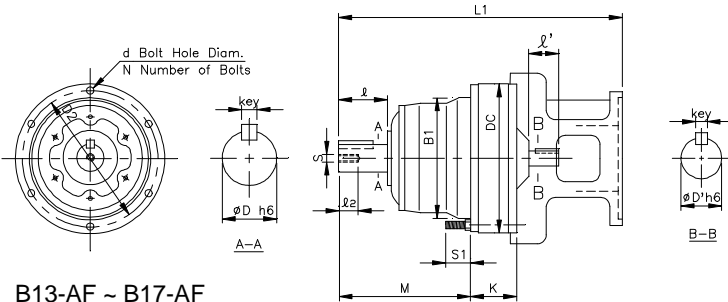
REDUCER w/ NEMA C-Face Adapter - AF

1 inch = 25.4 mm
All dimensions listed are for reference only.
Contact factory for certified dimensions.

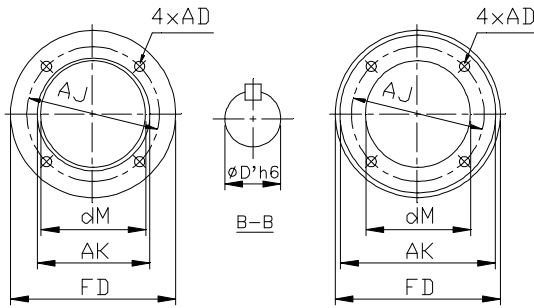
INCH SHAFT - SINGLE STAGE (Users Provide Own Couplings)



B09-AF ~ B12-AF



B13-AF ~ B17-AF



NEMA 56C, 143/145

NEMA 182/184 & above

DARALI Frame	Motor Frame	C-Face Adapter				
		dM	AK	FD	AJ	AD
B09-AF	56C	3.543	4.500	6.625	5.875	0.433
	143/145	3.543	4.500	6.625	5.875	0.433
B10-AF	56C	3.543	4.500	6.625	5.875	0.433
	143/145	3.543	4.500	6.625	5.875	0.433
B11-AF	56C	3.543	4.500	6.625	5.875	0.472
	143/145	3.543	4.500	6.625	5.875	0.472
	182/184	4.724	8.500	8.878	7.250	0.551
B12-AF	56C	3.543	4.500	6.625	5.875	0.472
	143/145	3.543	4.500	6.625	5.875	0.472
	182/184	4.724	8.500	8.878	7.250	0.551
B13-AF	56C	3.543	4.500	6.625	5.875	0.472
	143/145	3.543	4.500	6.625	5.875	0.472
	182/184	5.276	8.500	8.878	7.250	0.551
	213/215	5.276	8.500	8.878	7.250	0.551
B14-AF	56C	3.543	4.500	6.625	5.875	0.472
	143/145	3.543	4.500	6.625	5.875	0.472
	182/184	5.276	8.500	8.878	7.250	0.551
	213/215	5.276	8.500	8.878	7.250	0.551
B15-AF	56C	3.543	4.500	6.625	5.875	0.472
	143/145	3.543	4.500	6.625	5.875	0.472
	182/184	5.276	8.500	8.878	7.250	0.551
	213/215	5.276	8.500	8.878	7.250	0.551
B16-AF	182/184	5.315	8.500	8.878	7.250	0.551
	213/215	5.315	8.500	9.000	7.250	0.551
	254/256	5.315	8.500	9.626	7.250	0.551
B17-AF	182/184	5.315	8.500	8.878	7.250	0.551
	213/215	5.315	8.500	9.000	7.250	0.551
	254/256	5.315	8.500	9.626	7.250	0.551

DARALI Frame	Motor Frame	Dim. in mm										Dim. in inch				Wt (lb)			
		B1	DC	M	K	S1	L1	D2	d	N	D	I	Key	s	I2		D'	I'	Key
B09-AF	56C	105	150	129	38	26	284	134	9	8	1.125	1.97	1/4 x 1/4 x 1.18	M8	18	.625	.98	3/16 x 3/16 x .75	24
	143/145	105	150	129	38	26	284	134	9	8	1.125	1.97	1/4 x 1/4 x 1.18	M8	18	.625	.98	3/16 x 3/16 x .75	24
B10-AF	56C	105	150	129	56	27	291	134	9	8	1.125	1.97	1/4 x 1/4 x 1.18	M8	18	.625	.98	3/16 x 3/16 x .75	28
	143/145	105	150	129	56	27	291	134	9	8	1.125	1.97	1/4 x 1/4 x 1.18	M8	18	.625	.98	3/16 x 3/16 x .75	28
B11-AF	56C	140	204	139	61	28	326	180	11	6	1.500	2.17	3/8 x 3/8 x 1.77	M10	18	.750	1.38	3/16 x 3/16 x 1.02	53
	143/145	140	204	139	61	28	326	180	11	6	1.500	2.17	3/8 x 3/8 x 1.77	M10	18	.750	1.38	3/16 x 3/16 x 1.02	53
	182/184	140	204	139	61	28	345	180	11	6	1.500	2.17	3/8 x 3/8 x 1.77	M10	18	.750	1.38	3/16 x 3/16 x 1.02	57
B12-AF	56C	140	204	139	61	28	326	180	11	6	1.500	2.17	3/8 x 3/8 x 1.77	M10	18	.750	1.38	3/16 x 3/16 x 1.02	53
	143/145	140	204	139	61	28	326	180	11	6	1.500	2.17	3/8 x 3/8 x 1.77	M10	18	.750	1.38	3/16 x 3/16 x 1.02	53
	182/184	140	204	139	61	28	345	180	11	6	1.500	2.17	3/8 x 3/8 x 1.77	M10	18	.750	1.38	3/16 x 3/16 x 1.02	57
B13-AF	56C	165	230	177	75	30	388	205	11	6	1.875	2.76	1/2 x 1/2 x 2.17	M10	18	.875	1.57	3/16 x 3/16 x 1.38	92
	143/145	165	230	177	75	30	388	205	11	6	1.875	2.76	1/2 x 1/2 x 2.17	M10	18	.875	1.57	3/16 x 3/16 x 1.38	92
	182/184	165	230	177	75	30	407	205	11	6	1.875	2.76	1/2 x 1/2 x 2.17	M10	18	.875	1.57	3/16 x 3/16 x 1.38	95
	213/215	165	230	177	75	30	423	205	11	6	1.875	2.76	1/2 x 1/2 x 2.17	M10	18	.875	1.57	3/16 x 3/16 x 1.38	101
B14-AF	56C	165	230	197	75	30	408	205	11	6	1.875	3.54	1/2 x 1/2 x 2.17	M10	18	.875	1.57	3/16 x 3/16 x 1.38	94
	143/145	165	230	197	75	30	408	205	11	6	1.875	3.54	1/2 x 1/2 x 2.17	M10	18	.875	1.57	3/16 x 3/16 x 1.38	94
	182/184	165	230	197	75	30	427	205	11	6	1.875	3.54	1/2 x 1/2 x 2.17	M10	18	.875	1.57	3/16 x 3/16 x 1.38	97
	213/215	165	230	197	75	30	443	205	11	6	1.875	3.54	1/2 x 1/2 x 2.17	M10	18	.875	1.57	3/16 x 3/16 x 1.38	104
B15-AF	56C	165	230	197	75	30	408	205	11	6	1.875	3.54	1/2 x 1/2 x 2.17	M10	18	.875	1.57	3/16 x 3/16 x 1.38	94
	143/145	165	230	197	75	30	408	205	11	6	1.875	3.54	1/2 x 1/2 x 2.17	M10	18	.875	1.57	3/16 x 3/16 x 1.38	94
	182/184	165	230	197	75	30	427	205	11	6	1.875	3.54	1/2 x 1/2 x 2.17	M10	18	.875	1.57	3/16 x 3/16 x 1.38	97
	213/215	165	230	197	75	30	443	205	11	6	1.875	3.54	1/2 x 1/2 x 2.17	M10	18	.875	1.57	3/16 x 3/16 x 1.38	104
B16-AF	182/184	200	318	222	102	40	499	270	14	6	2.250	3.54	1/2 x 1/2 x 2.95	M10	18	1.125	1.77	1/4 x 1/4 x 1.77	192
	213/215	200	318	222	102	40	523	270	14	6	2.250	3.54	1/2 x 1/2 x 2.95	M10	18	1.125	1.77	1/4 x 1/4 x 1.77	194
	254/256	200	318	222	102	40	534	270	14	6	2.250	3.54	1/2 x 1/2 x 2.95	M10	18	1.125	1.77	1/4 x 1/4 x 1.77	198
B17-AF	182/184	250	362	262	110	45	563	300	15	8	2.750	3.54	5/8 x 5/8 x 3.15	M12	24	1.375	2.17	5/16 x 5/16 x 2.17	250
	213/215	250	362	262	110	45	579	300	15	8	2.750	3.54	5/8 x 5/8 x 3.15	M12	24	1.375	2.17	5/16 x 5/16 x 2.17	252
	254/256	250	362	262	110	45	598	300	15	8	2.750	3.54	5/8 x 5/8 x 3.15	M12	24	1.375	2.17	5/16 x 5/16 x 2.17	256