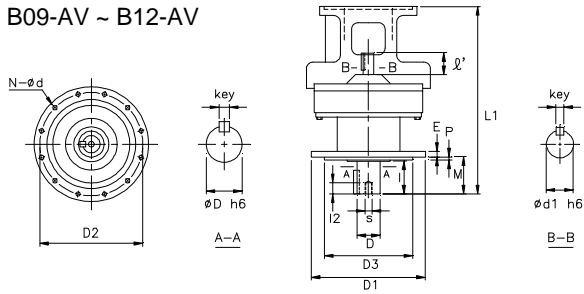


REDUCER w/ NEMA C-Face Adapter - AV

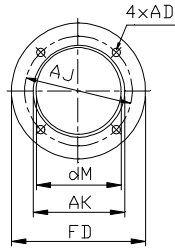
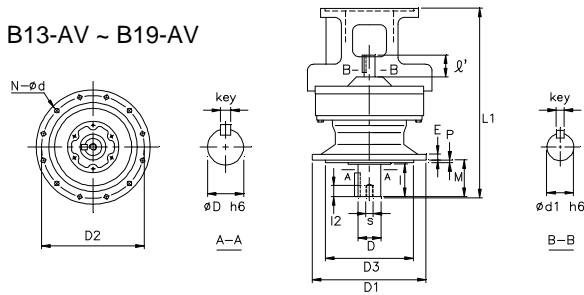
1 inch = 25.4 mm
All dimensions listed are for reference only.
Contact factory for certified dimensions.

INCH SHAFT - SINGLE STAGE (Users Provide Own Couplings)

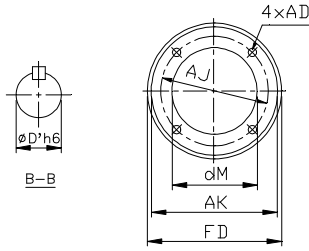
B09-AV ~ B12-AV



B13-AV ~ B19-AV



NEMA
56C, 143/145



NEMA
182/184 & above

DARALI Frame	Motor Frame	C-Face Adapter				
		dM	AK	FD	AJ	AD
B09-AV	56C	3.543	4.500	6.625	5.875	0.433
	143/145	3.543	4.500	6.625	5.875	0.433
B10-AV	56C	3.543	4.500	6.625	5.875	0.433
	143/145	3.543	4.500	6.625	5.875	0.433
B11-AV	56	3.543	4.500	6.625	5.875	0.472
	143/145	3.543	4.500	6.625	5.875	0.472
	182/184	4.724	8.500	8.878	7.250	0.551
B12-AV	56	3.543	4.500	6.625	5.875	0.472
	143/145	3.543	4.500	6.625	5.875	0.472
	182/184	4.724	8.500	8.878	7.250	0.551
B13-AV	56	3.543	4.500	6.625	5.875	0.472
	143/145	3.543	4.500	6.625	5.875	0.472
	182/184	5.276	8.500	8.878	7.250	0.551
	213/215	5.276	8.500	8.878	7.250	0.551
B14-AV	56	3.543	4.500	6.625	5.875	0.472
	143/145	3.543	4.500	6.625	5.875	0.472
	182/184	5.276	8.500	8.878	7.250	0.551
	213/215	5.276	8.500	8.878	7.250	0.551
B15-AV	56	3.543	4.500	6.625	5.875	0.472
	143/145	3.543	4.500	6.625	5.875	0.472
	182/184	5.276	8.500	8.878	7.250	0.551
	213/215	5.276	8.500	8.878	7.250	0.551
B16-AV	182/184	5.315	8.500	8.878	7.250	0.551
	213/215	5.315	8.500	9.000	7.250	0.551
	254/256	5.315	8.500	9.626	7.250	0.551
B17-AV	182/184	5.315	8.500	8.878	7.250	0.551
	213/215	5.315	8.500	9.000	7.250	0.551
	254/256	5.315	8.500	9.626	7.250	0.551
B18-AV	254/256	5.354	8.500	9.626	7.250	0.551
	254/286	5.354	10.500	11.000	9.000	0.551
B19-AV	284/286	6.614	10.500	11.000	9.000	0.551

DARALI Frame	Motor Frame	Dim. in mm											Dim. in inch					Wt (lb)	
		L1	D1	D2	D3	E	M	N	d	P	Output Shaft					Input Shaft			
											D	I	Key	s	I2	D'	I'		Key
B09-AV	56C	284	160	134	110	9	63	4	11	3	1.125	1.97	1/4 x 1/4 x 1.18	M8	18	.625	.98	3/16 x 3/16 x .75	27
	143/145	284	160	134	110	9	63	4	11	3	1.125	1.97	1/4 x 1/4 x 1.18	M8	18	.625	.98	3/16 x 3/16 x .75	27
B10-AV	56C	291	160	134	110	9	63	4	11	3	1.125	1.97	1/4 x 1/4 x 1.18	M8	18	.625	.98	3/16 x 3/16 x .75	32
	143/145	291	160	134	110	9	63	4	11	3	1.125	1.97	1/4 x 1/4 x 1.18	M8	18	.625	.98	3/16 x 3/16 x .75	32
	56	326	210	180	140	13	69	6	11	4	1.500	2.17	3/8 x 3/8 x 1.77	M10	18	.750	1.38	3/16 x 3/16 x 1.02	60
B11-AV	143/145	326	210	180	140	13	69	6	11	4	1.500	2.17	3/8 x 3/8 x 1.77	M10	18	.750	1.38	3/16 x 3/16 x 1.02	60
	182/184	345	210	180	140	13	69	6	11	4	1.500	2.17	3/8 x 3/8 x 1.77	M10	18	.750	1.38	3/16 x 3/16 x 1.02	66
	56	326	210	180	140	13	69	6	11	4	1.500	2.17	3/8 x 3/8 x 1.77	M10	18	.750	1.38	3/16 x 3/16 x 1.02	60
B12-AV	143/145	326	210	180	140	13	69	6	11	4	1.500	2.17	3/8 x 3/8 x 1.77	M10	18	.750	1.38	3/16 x 3/16 x 1.02	60
	182/184	345	210	180	140	13	69	6	11	4	1.500	2.17	3/8 x 3/8 x 1.77	M10	18	.750	1.38	3/16 x 3/16 x 1.02	66
	56	388	260	230	200	15	76	6	11	4	1.875	2.76	1/2 x 1/2 x 2.17	M10	18	.875	1.57	3/16 x 3/16 x 1.38	105
B13-AV	143/145	388	260	230	200	15	76	6	11	4	1.875	2.76	1/2 x 1/2 x 2.17	M10	18	.875	1.57	3/16 x 3/16 x 1.38	105
	182/184	407	260	230	200	15	76	6	11	4	1.875	2.76	1/2 x 1/2 x 2.17	M10	18	.875	1.57	3/16 x 3/16 x 1.38	108
	213/215	423	260	230	200	15	76	6	11	4	1.875	2.76	1/2 x 1/2 x 2.17	M10	18	.875	1.57	3/16 x 3/16 x 1.38	115
	56	408	260	230	200	15	96	6	11	4	1.875	3.54	1/2 x 1/2 x 2.17	M10	18	.875	1.57	3/16 x 3/16 x 1.38	105
B14-AV	143/145	408	260	230	200	15	96	6	11	4	1.875	3.54	1/2 x 1/2 x 2.17	M10	18	.875	1.57	3/16 x 3/16 x 1.38	105
	182/184	427	260	230	200	15	96	6	11	4	1.875	3.54	1/2 x 1/2 x 2.17	M10	18	.875	1.57	3/16 x 3/16 x 1.38	111
	213/215	443	260	230	200	15	96	6	11	4	1.875	3.54	1/2 x 1/2 x 2.17	M10	18	.875	1.57	3/16 x 3/16 x 1.38	117
	56	408	260	230	200	15	96	6	11	4	1.875	3.54	1/2 x 1/2 x 2.17	M10	18	.875	1.57	3/16 x 3/16 x 1.38	105
B15-AV	143/145	408	260	230	200	15	96	6	11	4	1.875	3.54	1/2 x 1/2 x 2.17	M10	18	.875	1.57	3/16 x 3/16 x 1.38	105
	182/184	427	260	230	200	15	96	6	11	4	1.875	3.54	1/2 x 1/2 x 2.17	M10	18	.875	1.57	3/16 x 3/16 x 1.38	111
	213/215	443	260	230	200	15	96	6	11	4	1.875	3.54	1/2 x 1/2 x 2.17	M10	18	.875	1.57	3/16 x 3/16 x 1.38	117
	56	499	340	310	270	20	89	6	11	4	2.250	3.54	1/2 x 1/2 x 2.95	M10	18	1.125	1.77	1/4 x 1/4 x 1.77	220
B16-AV	213/215	523	340	310	270	20	89	6	11	4	2.250	3.54	1/2 x 1/2 x 2.95	M10	18	1.125	1.77	1/4 x 1/4 x 1.77	223
	254/256	534	340	310	270	20	89	6	11	4	2.250	3.54	1/2 x 1/2 x 2.95	M10	18	1.125	1.77	1/4 x 1/4 x 1.77	226
	182/184	563	400	360	316	22	94	8	14	5	2.750	3.54	5/8 x 5/8 x 3.15	M12	24	1.375	2.17	5/16 x 5/16 x 2.17	305
B17-AV	213/215	579	400	360	316	22	94	8	14	5	2.750	3.54	5/8 x 5/8 x 3.15	M12	24	1.375	2.17	5/16 x 5/16 x 2.17	307
	254/256	598	400	360	316	22	94	8	14	5	2.750	3.54	5/8 x 5/8 x 3.15	M12	24	1.375	2.17	5/16 x 5/16 x 2.17	311
	56	648	430	390	345	22	110	8	18	5	3.125	4.33	3/4 x 3/4 x 3.74	M12	24	1.500	2.56	3/8 x 3/8 x 2.56	387
B18-AV	254/286	664	430	390	345	22	110	8	18	5	3.125	4.33	3/4 x 3/4 x 3.74	M12	24	1.500	2.56	3/8 x 3/8 x 2.56	392
	284/286	757	490	450	400	30	145	12	18	6	3.625	5.31	7/8 x 7/8 x 4.92	M20	34	1.750	2.76	3/8 x 3/8 x 2.56	568