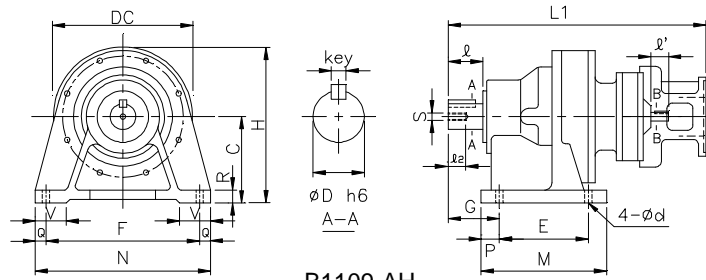


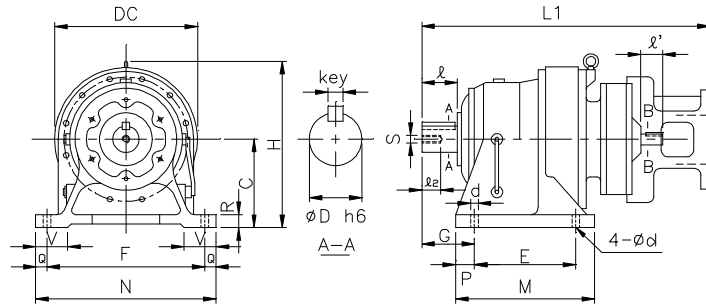
REDUCER w/ NEMA C-Face Adapter - AH

1 inch = 25.4 mm
All dimensions listed are for reference only.
Contact factory for certified dimensions.

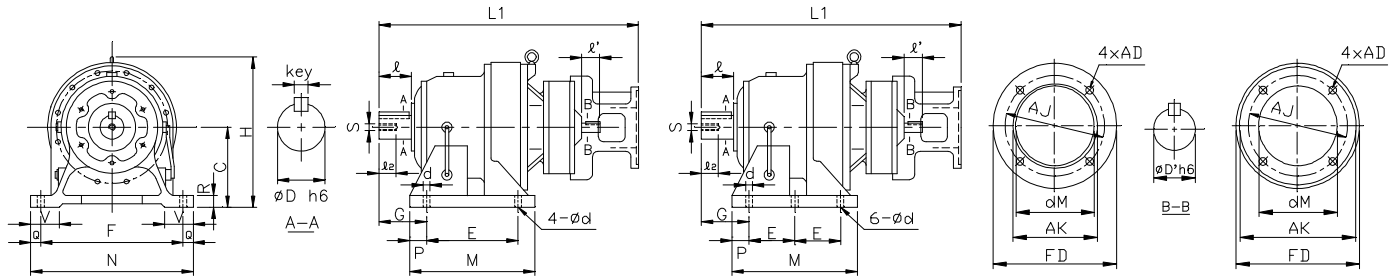
INCH SHAFT - DOUBLE STAGE
(Users Provide Own Couplings)



B1109-AH



B1310-AH ~ B1813-AH



B1911-AH ~ B2619-AH

B2719-AH,
A904-AH ~ A939-AH
(w/ 6 Mounting Holes)

NEMA
56C, 143/145

NEMA
182/184 & above

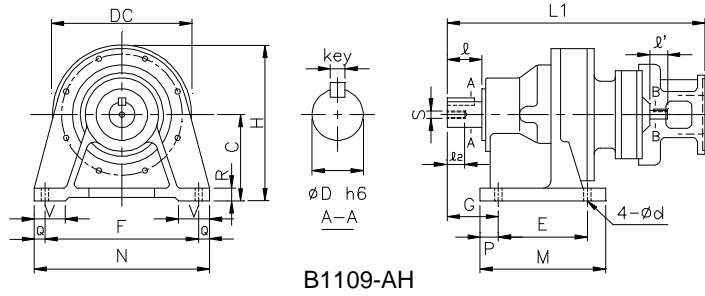
FRAME SIZE	Motor Frame	C-Face Adapter					Wt (lb)
		dM	AK	FD	AJ	AD	
B1109-AH	56C	3.543	4.500	6.625	5.875	0.433	71
	143/145	3.543	4.500	6.625	5.875	0.433	71
B1310-AH	56C	3.543	4.500	6.625	5.875	0.433	124
	143/145	3.543	4.500	6.625	5.875	0.433	124
B1409-AH	56C	3.543	4.500	6.625	5.875	0.433	118
	143/145	3.543	4.500	6.625	5.875	0.433	118
B1611-AH	56C	3.543	4.500	6.625	5.875	0.472	217
	143/145	3.543	4.500	6.625	5.875	0.472	217
	182/184	4.724	8.500	8.878	7.250	0.551	221
B1711-AH	56C	3.543	4.500	6.625	5.875	0.472	280
	143/145	3.543	4.500	6.625	5.875	0.472	280
	182/184	4.724	8.500	8.878	7.250	0.551	284
B1813-AH	56C	3.543	4.500	6.625	5.875	0.472	376
	143/145	3.543	4.500	6.625	5.875	0.472	376
	182/184	5.276	8.500	8.878	7.250	0.551	380
	213/215	5.276	8.500	8.878	7.250	0.551	386
B1911-AH	56C	3.543	4.500	6.625	5.875	0.472	541
	143/145	3.543	4.500	6.625	5.875	0.472	541
	182/184	4.724	8.500	8.878	7.250	0.551	545
B1913-AH	56C	3.543	4.500	6.625	5.875	0.472	552
	143/145	3.543	4.500	6.625	5.875	0.472	552
	182/184	5.276	8.500	8.878	7.250	0.551	567
	213/215	5.276	8.500	8.878	7.250	0.551	573

FRAME SIZE	Motor Frame	Dim. in mm													Dim. in inch							
		C	E	F	G	H	L1	M	N	P	Q	R	V	d	Output Shaft			Input Shaft				
B1109-AH	56C	120	115	190	82	222	379	155	230	20	20	21	55	14	1.500	2.17	3/8 x 3/8 x 1.77	M10	18	.625	.98	3/16 x 3/16 x .75
	143/145	120	115	190	82	222	379	155	230	20	20	21	55	14	1.500	2.17	3/8 x 3/8 x 1.77	M10	18	.625	.98	3/16 x 3/16 x .75
B1310-AH	56C	150	145	290	100	265	433	195	330	25	20	27	65	18	1.875	2.76	1/2 x 1/2 x 2.17	M10	18	.625	.98	3/16 x 3/16 x .75
	143/145	150	145	290	100	265	433	195	330	25	20	27	65	18	1.875	2.76	1/2 x 1/2 x 2.17	M10	18	.625	.98	3/16 x 3/16 x .75
B1409-AH	56C	150	145	290	120	265	450	195	330	25	20	27	65	18	1.875	3.54	1/2 x 1/2 x 2.17	M10	18	.625	.98	3/16 x 3/16 x .75
	143/145	150	145	290	120	265	450	195	330	25	20	27	65	18	1.875	3.54	1/2 x 1/2 x 2.17	M10	18	.625	.98	3/16 x 3/16 x .75
B1611-AH	56C	160	150	370	139	319	528	238	410	44	20	30	75	18	2.250	3.54	1/2 x 1/2 x 2.95	M10	18	.750	1.38	3/16 x 3/16 x 1.02
	143/145	160	150	370	139	319	528	238	410	44	20	30	75	18	2.250	3.54	1/2 x 1/2 x 2.95	M10	18	.750	1.38	3/16 x 3/16 x 1.02
	182/184	160	150	370	139	319	547	238	410	44	20	30	75	18	2.250	3.54	1/2 x 1/2 x 2.95	M10	18	.750	1.38	3/16 x 3/16 x 1.02
	213/215	220	320	420	145	415	679	380	470	30	25	33	85	22	3.125	4.33	3/4 x 3/4 x 3.74	M12	24	.875	1.57	3/16 x 3/16 x 1.38
B1711-AH	56C	200	275	380	125	381	575	335	430	30	25	32	80	22	2.750	3.54	5/8 x 5/8 x 3.15	M12	24	.750	1.38	3/16 x 3/16 x 1.02
	143/145	200	275	380	125	381	575	335	430	30	25	32	80	22	2.750	3.54	5/8 x 5/8 x 3.15	M12	24	.750	1.38	3/16 x 3/16 x 1.02
	182/184	200	275	380	125	381	594	335	430	30	25	32	80	22	2.750	3.54	5/8 x 5/8 x 3.15	M12	24	.750	1.38	3/16 x 3/16 x 1.02
B1813-AH	56C	220	320	420	145	415	644	380	470	30	25	33	85	22	3.125	4.33	3/4 x 3/4 x 3.74	M12	24	.875	1.57	3/16 x 3/16 x 1.38
	143/145	220	320	420	145	415	644	380	470	30	25	33	85	22	3.125	4.33	3/4 x 3/4 x 3.74	M12	24	.875	1.57	3/16 x 3/16 x 1.38
	182/184	220	320	420	145	415	663	380	470	30	25	33	85	22	3.125	4.33	3/4 x 3/4 x 3.74	M12	24	.875	1.57	3/16 x 3/16 x 1.38
	213/215	220	320	420	145	415	679	380	470	30	25	33	85	22	3.125	4.33	3/4 x 3/4 x 3.74	M12	24	.875	1.57	3/16 x 3/16 x 1.38
B1911-AH	56C	250	380	480	170	476	695	440	530	30	25	40	90	26	3.625	5.31	7/8 x 7/8 x 4.92	M20	34	.750	1.38	3/16 x 3/16 x 1.02
	143/145	250	380	480	170	476	695	440	530	30	25	40	90	26	3.625	5.31	7/8 x 7/8 x 4.92	M20	34	.750	1.38	3/16 x 3/16 x 1.02
	182/184	250	380	480	170	476	714	440	530	30	25	40	90	26	3.625	5.31	7/8 x 7/8 x 4.92	M20	34	.750	1.38	3/16 x 3/16 x 1.02
B1913-AH	56C	250	380	480	170	476	720	440	530	30	25	40	90	26	3.625	5.31	7/8 x 7/8 x 4.92	M20	34	.875	1.57	3/16 x 3/16 x 1.38
	143/145	250	380	480	170	476	720	440	530	30	25	40	90	26	3.625	5.31	7/8 x 7/8 x 4.92	M20	34	.875	1.57	3/16 x 3/16 x 1.38
	182/184	250	380	480	170	476	739	440	530	30	25	40	90	26	3.625	5.31	7/8 x 7/8 x 4.92	M20	34	.875	1.57	3/16 x 3/16 x 1.38
	213/215	250	380	480	170	476	755	440	530	30	25	40	90	26	3.625	5.31	7/8 x 7/8 x 4.92	M20	34	.875	1.57	3/16 x 3/16 x 1.38

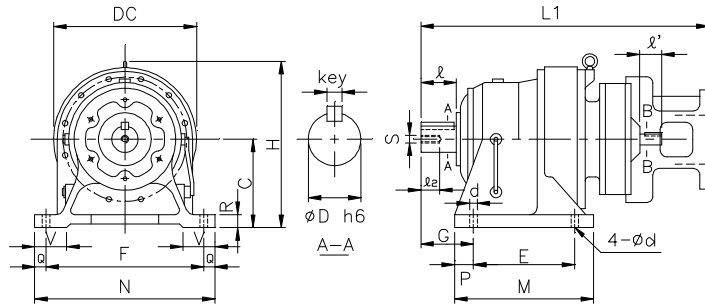
REDUCER w/ NEMA C-Face Adapter - AH

1 inch = 25.4 mm
 All dimensions listed are for reference only.
 Contact factory for certified dimensions.

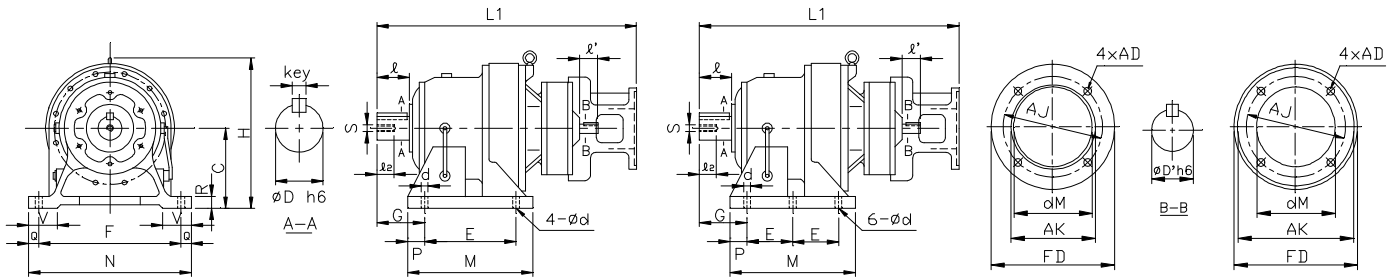
INCH SHAFT - DOUBLE STAGE
 (Users Provide Own Couplings)



B1109-AH



B1310-AH ~ B1813-AH



B1911-AH ~ B2619-AH

B2719-AH,
 A904-AH ~ A939-AH
 (w/ 6 Mounting Holes)

NEMA
 56C, 143/145

NEMA
 182/184 & above

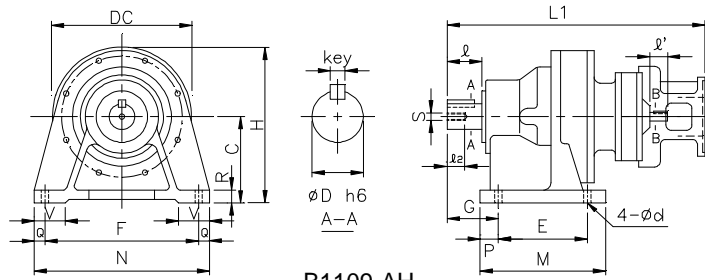
FRAME SIZE	Motor Frame	C-Face Adapter					Wt (lb)
		dM	AK	FD	AJ	AD	
B2011-AH	56C	3.543	4.500	6.625	5.875	0.472	583
	143/145	3.543	4.500	6.625	5.875	0.472	583
	182/184	4.724	8.500	8.878	7.250	0.551	587
B2013-AH	56C	3.543	4.500	6.625	5.875	0.472	614
	143/145	3.543	4.500	6.625	5.875	0.472	614
	182/184	5.276	8.500	8.878	7.250	0.551	618
	213/215	5.276	8.500	8.878	7.250	0.551	624
B2113-AH	56C	3.543	4.500	6.625	5.875	0.472	793
	143/145	3.543	4.500	6.625	5.875	0.472	793
	182/184	5.276	8.500	8.878	7.250	0.551	796
	213/215	5.276	8.500	8.878	7.250	0.551	803
B2116-AH	182/184	5.315	8.500	8.878	7.250	0.551	871
	213/215	5.315	8.500	9.000	7.250	0.551	875
	254/256	5.315	8.500	9.626	7.250	0.551	881
B2213-AH	56C	3.543	4.500	6.625	5.875	0.472	958
	143/145	3.543	4.500	6.625	5.875	0.472	958
	182/184	5.276	8.500	8.878	7.250	0.551	962
	213/215	5.276	8.500	8.878	7.250	0.551	968
B2217-AH	182/184	5.315	8.500	8.878	7.250	0.551	1088
	213/215	5.315	8.500	9.000	7.250	0.551	1090
	254/256	5.315	8.500	9.626	7.250	0.551	1094
B2316-AH	182/184	5.315	8.500	8.878	7.250	0.551	1254
	213/215	5.315	8.500	9.000	7.250	0.551	1257
	254/256	5.315	8.500	9.626	7.250	0.551	1261
B2318-AH	254/256	5.354	8.500	9.626	7.250	0.551	1340
	284/286	5.354	10.500	11.000	9.000	0.551	1345

FRAME SIZE	Motor Frame	Dim. in mm														Dim. in inch				Dim. in inch		
		C	E	F	G	H	L1	M	N	P	Q	R	V	d	D	I	Key	s	I2	D1	I1	Key
B2011-AH	56C	250	360	440	215	485	736	440	530	40	45	40	100	26	3.875	6.50	1 x 1 x 6.50	M20	34	.750	1.38	3/16 x 3/16 x 1.02
	143/145	250	360	440	215	485	736	440	530	40	45	40	100	26	3.875	6.50	1 x 1 x 6.50	M20	34	.750	1.38	3/16 x 3/16 x 1.02
	182/184	250	360	440	215	485	755	440	530	40	45	40	100	26	3.875	6.50	1 x 1 x 6.50	M20	34	.750	1.38	3/16 x 3/16 x 1.02
B2013-AH	56C	250	360	440	215	485	772	440	530	40	45	40	100	26	3.875	6.50	1 x 1 x 6.50	M20	34	.875	1.57	3/16 x 3/16 x 1.38
	143/145	250	360	440	215	485	772	440	530	40	45	40	100	26	3.875	6.50	1 x 1 x 6.50	M20	34	.875	1.57	3/16 x 3/16 x 1.38
	182/184	250	360	440	215	485	791	440	530	40	45	40	100	26	3.875	6.50	1 x 1 x 6.50	M20	34	.875	1.57	3/16 x 3/16 x 1.38
	213/215	250	360	440	215	485	807	440	530	40	45	40	100	26	3.875	6.50	1 x 1 x 6.50	M20	34	.875	1.57	3/16 x 3/16 x 1.38
B2113-AH	56C	265	395	480	210	518	798	475	580	40	50	42	110	26	4.250	6.50	1 x 1 x 6.50	M20	34	.875	1.57	3/16 x 3/16 x 1.38
	143/145	265	395	480	210	518	798	475	580	40	50	42	110	26	4.250	6.50	1 x 1 x 6.50	M20	34	.875	1.57	3/16 x 3/16 x 1.38
	182/184	265	395	480	210	518	817	475	580	40	50	42	110	26	4.250	6.50	1 x 1 x 6.50	M20	34	.875	1.57	3/16 x 3/16 x 1.38
	213/215	265	395	480	210	518	833	475	580	40	50	42	110	26	4.250	6.50	1 x 1 x 6.50	M20	34	.875	1.57	3/16 x 3/16 x 1.38
B2116-AH	182/184	265	395	480	210	518	864	475	580	40	50	42	110	26	4.250	6.50	1 x 1 x 6.50	M20	34	1.125	1.77	1/4 x 1/4 x 1.77
	213/215	265	395	480	210	518	888	475	580	40	50	42	110	26	4.250	6.50	1 x 1 x 6.50	M20	34	1.125	1.77	1/4 x 1/4 x 1.77
	254/256	265	395	480	210	518	899	475	580	40	50	42	110	26	4.250	6.50	1 x 1 x 6.50	M20	34	1.125	1.77	1/4 x 1/4 x 1.77
B2213-AH	56C	280	420	540	230	554	840	520	620	50	40	42	115	33	4.625	6.50	1 1/4 x 7/8 x 6.50	M20	34	.875	1.57	3/16 x 3/16 x 1.38
	143/145	280	420	540	230	554	840	520	620	50	40	42	115	33	4.625	6.50	1 1/4 x 7/8 x 6.50	M20	34	.875	1.57	3/16 x 3/16 x 1.38
	182/184	280	420	540	230	554	859	520	620	50	40	42	115	33	4.625	6.50	1 1/4 x 7/8 x 6.50	M20	34	.875	1.57	3/16 x 3/16 x 1.38
	213/215	280	420	540	230	554	875	520	620	50	40	42	115	33	4.625	6.50	1 1/4 x 7/8 x 6.50	M20	34	.875	1.57	3/16 x 3/16 x 1.38
B2217-AH	182/184	280	420	540	230	554	941	520	620	50	40	42	115	33	4.625	6.50	1 1/4 x 7/8 x 6.50	M20	34	1.375	2.17	5/16 x 5/16 x 2.17
	213/215	280	420	540	230	554	957	520	620	50	40	42	115	33	4.625	6.50	1 1/4 x 7/8 x 6.50	M20	34	1.375	2.17	5/16 x 5/16 x 2.17
	254/256	280	420	540	230	554	976	520	620	50	40	42	115	33	4.625	6.50	1 1/4 x 7/8 x 6.50	M20	34	1.375	2.17	5/16 x 5/16 x 2.17
B2316-AH	182/184	300	460	580	260	595	967	560	670	50	45	45	120	33	5.000	7.87	1 1/4 x 7/8 x 7.87	M24	41	1.125	1.77	1/4 x 1/4 x 1.77
	213/215	300	460	580	260	595	991	560	670	50	45	45	120	33	5.000	7.87	1 1/4 x 7/8 x 7.87	M24	41	1.125	1.77	1/4 x 1/4 x 1.77
	254/256	300	460	580	260	595	1002	560	670	50	45	45	120	33	5.000	7.87	1 1/4 x 7/8 x 7.87	M24	41	1.125	1.77	1/4 x 1/4 x 1.77
B2318-AH	254/256	300	460	580	260	595	1051	560	670	50	45	45	120	33	5.000	7.87	1 1/4 x 7/8 x 7.87	M24	41	1.500	2.56	3/8 x 3/8 x 2.56
	284/286	300	460	580	260	595	1067	560	670	50	45	45	120	33	5.000	7.87	1 1/4 x 7/8 x 7.87	M24	41	1.500	2.56	3/8 x 3/8 x 2.56

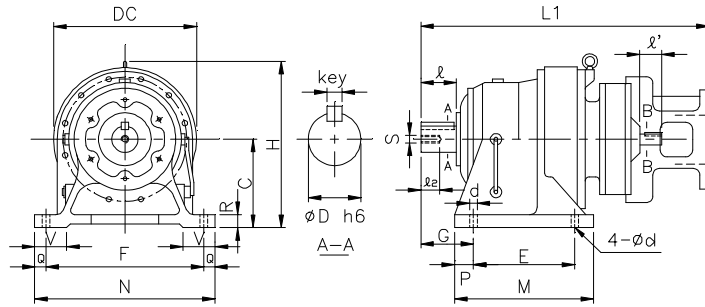
REDUCER w/ NEMA C-Face Adapter - AH

1 inch = 25.4 mm
 All dimensions listed are for reference only.
 Contact factory for certified dimensions.

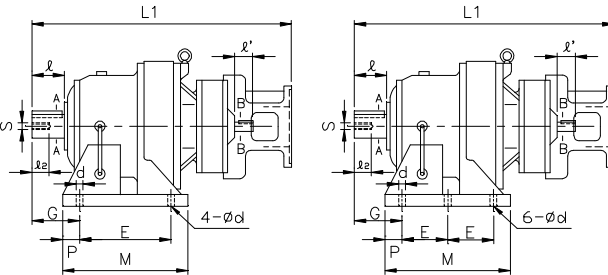
INCH SHAFT - DOUBLE STAGE (Users Provide Own Couplings)



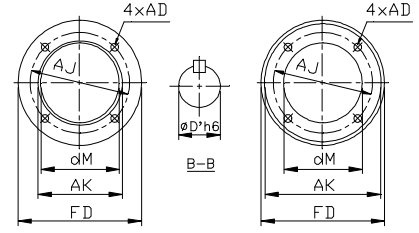
B1109-AH



B1911-AH ~ B2619-AH



B2719-AH,
 A904-AH ~ A939-AH



NEMA
 56C, 143/145

NEMA
 182/184 & above

FRAME SIZE	Motor Frame	C-Face Adapter					Wt (lb)
		dM	AK	FD	AJ	AD	
B2416-AH	182/184	5.315	8.500	8.878	7.250	0.551	1493
	213/215	5.315	8.500	9.000	7.250	0.551	1495
	254/256	5.315	8.500	9.626	7.250	0.551	1499
B2418-AH	254/256	5.354	8.500	9.626	7.250	0.551	1569
	284/286	5.354	10.500	11.000	9.000	0.551	1574
B2517-AH	182/184	5.315	8.500	8.878	7.250	0.551	2165
	213/215	5.315	8.500	9.000	7.250	0.551	2267
	254/256	5.315	8.500	9.626	7.250	0.551	2271
B2519-AH	284/286	6.614	10.500	11.000	9.000	0.551	2464
B2619-AH	284/286	6.614	10.500	11.000	9.000	0.551	3026
B2719-AH	284/286	6.614	10.500	11.000	9.000	0.551	5540
A904-AH	56C	3.543	4.500	6.625	5.875	0.472	883
	143/145	3.543	4.500	6.625	5.875	0.472	883
	182/184	5.276	8.500	8.878	7.250	0.551	887
	213/215	5.276	8.500	8.878	7.250	0.551	896
A906-AH	182/184	5.315	8.500	8.878	7.250	0.551	976
	213/215	5.315	8.500	9.000	7.250	0.551	981
	254/256	5.315	8.500	9.626	7.250	0.551	986
A916-AH	182/184	5.315	8.500	8.878	7.250	0.551	1285
	213/215	5.315	8.500	9.000	7.250	0.551	1290
	254/256	5.315	8.500	9.626	7.250	0.551	1295
A917-AH	182/184	5.315	8.500	8.878	7.250	0.551	1350
	213/215	5.315	8.500	9.000	7.250	0.551	1355
	254/256	5.315	8.500	9.626	7.250	0.551	1365
A928-AH	254/256	5.354	8.500	9.626	7.250	0.551	2535
	284/286	5.354	10.500	11.000	9.000	0.551	2540
A939-AH	284/286	6.614	10.500	11.000	9.000	0.551	5570

FRAME SIZE	Motor Frame	Dim. in mm													Dim. in inch					Dim. in inch		
		C	E	F	G	H	L1	M	N	P	Q	R	V	d	Output Shaft			Input Shaft				
															D	I	Key	s	I2	D1	I1	Key
B2416-AH	182/184	335	480	630	263	654	1005	580	720	50	45	45	128	39	5.500	7.87	1 1/4 x 7/8 x 7.87	M24	41	1.125	1.77	1/4 x 1/4 x 1.77
	213/215	335	480	630	263	654	1029	580	720	50	45	45	128	39	5.500	7.87	1 1/4 x 7/8 x 7.87	M24	41	1.125	1.77	1/4 x 1/4 x 1.77
	254/256	335	480	630	263	654	1040	580	720	50	45	45	128	39	5.500	7.87	1 1/4 x 7/8 x 7.87	M24	41	1.125	1.77	1/4 x 1/4 x 1.77
B2418-AH	254/256	335	480	630	263	654	1088	580	720	50	45	45	128	39	5.500	7.87	1 1/4 x 7/8 x 7.87	M24	41	1.500	2.56	3/8 x 3/8 x 2.56
	284/286	335	480	630	263	654	1104	580	720	50	45	45	128	39	5.500	7.87	1 1/4 x 7/8 x 7.87	M24	41	1.500	2.56	3/8 x 3/8 x 2.56
B2517-AH	182/184	375	520	670	320	726	1162	630	780	55	55	50	140	39	6.250	9.45	1 1/2 x 1 x 9.45	M30	49	1.375	2.17	5/16 x 5/16 x 2.17
	213/215	375	520	670	320	726	1178	630	780	55	55	50	140	39	6.250	9.45	1 1/2 x 1 x 9.45	M30	49	1.375	2.17	5/16 x 5/16 x 2.17
	254/256	375	520	670	320	726	1197	630	780	55	55	50	140	39	6.250	9.45	1 1/2 x 1 x 9.45	M30	49	1.375	2.17	5/16 x 5/16 x 2.17
B2519-AH	284/286	375	520	670	320	726	1270	630	780	55	55	50	140	39	6.250	9.45	1 1/2 x 1 x 9.45	M30	49	1.750	2.76	3/8 x 3/8 x 2.56
B2619-AH	284/286	400	590	770	390	786	1380	700	880	55	55	160	45	6.625	11.81	1 3/4 x 1 1/4 x 11.8	M30	49	1.750	2.76	3/8 x 3/8 x 2.56	
B2719-AH	284/286	540	420	1050	485	1033	1641	1040	1160	100	55	60	200	45	7.000	13.0	1 3/4 x 1 1/4 x 13	M30	52	1.750	2.76	3/8 x 3/8 x 2.56
A904-AH	56C	290	240	560	215	556	830	560	620	40	30	40	100	26	4.250	6.69	1 x 1 x 6.31	M20	34	.875	1.57	3/16 x 3/16 x 1.38
	143/145	290	240	560	215	556	830	560	620	40	30	40	100	26	4.250	6.69	1 x 1 x 6.31	M20	34	.875	1.57	3/16 x 3/16 x 1.38
	182/184	290	240	560	215	556	849	560	620	40	30	40	100	26	4.250	6.69	1 x 1 x 6.31	M20	34	.875	1.57	3/16 x 3/16 x 1.38
	213/215	290	240	560	215	556	865	560	620	40	30	40	100	26	4.250	6.69	1 x 1 x 6.31	M20	34	.875	1.57	3/16 x 3/16 x 1.38
A906-AH	182/184	290	240	560	215	556	894	560	620	40	30	40	100	26	4.250	6.69	1 x 1 x 6.31	M20	34	1.125	1.77	1/4 x 1/4 x 1.77
	213/215	290	240	560	215	556	918	560	620	40	30	40	100	26	4.250	6.69	1 x 1 x 6.31	M20	34	1.125	1.77	1/4 x 1/4 x 1.77
	254/256	290	240	560	215	556	929	560	620	40	30	40	100	26	4.250	6.69	1 x 1 x 6.31	M20	34	1.125	1.77	1/4 x 1/4 x 1.77
A916-AH	182/184	325	250	630	290	625	994	600	690	50	30	40	105	26	4.625	8.28	1 1/4 x 7/8 x 7.88	M24	42	1.125	1.77	1/4 x 1/4 x 1.77
	213/215	325	250	630	290	625	1018	600	690	50	30	40	105	26	4.625	8.28	1 1/4 x 7/8 x 7.88	M24	42	1.125	1.77	1/4 x 1/4 x 1.77
	254/256	325	250	630	290	625	1029	600	690	50	30	40	105	26	4.625	8.28	1 1/4 x 7/8 x 7.88	M24	42	1.125	1.77	1/4 x 1/4 x 1.77
A917-AH	182/184	325	250	630	290	625	1018	600	690	50	30	40	105	26	4.625	8.28	1 1/4 x 7/8 x 7.88	M24	42	1.375	2.17	5/16 x 5/16 x 2.17
	213/215	325	250	630	290	625	1034	600	690	50	30	40	105	26	4.625	8.28	1 1/4 x 7/8 x 7.88	M24	42	1.375	2.17	5/16 x 5/16 x 2.17
	254/256	325	250	630	290	625	1053	600	690	50	30	40	105	26	4.625	8.28	1 1/4 x 7/8 x 7.88	M24	42	1.375	2.17	5/16 x 5/16 x 2.17
A928-AH	254/256	420	330	800	372	800	1271	810	880	75	40	50	143	39	5.500	9.84	1 1/4 x 7/8 x 9.66	M30	52	1.500	2.56	3/8 x 3/8 x 2.56
	284/286	420	330	800	372	800	1287	810	880	75	40	50	143	39	5.500	9.84	1 1/4 x 7/8 x 9.66	M30	52	1.500	2.56	3/8 x 3/8 x 2.56
A939-AH	284/286	540	420	1050	485	1045	1641	1040	1160	100	55	60	200	45	7.000	13	1 3/4 x 1 1/4 x 13	M30	52	1.750	2.76	3/8 x 3/8 x 2.56