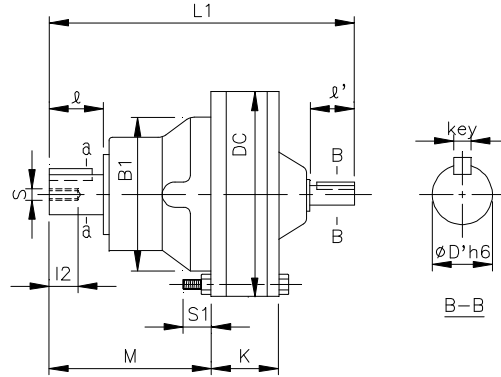
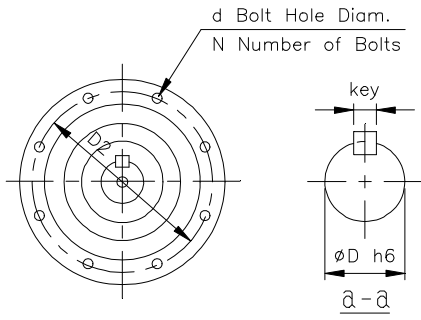


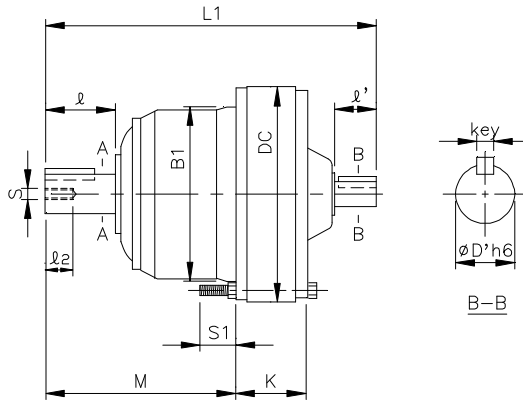
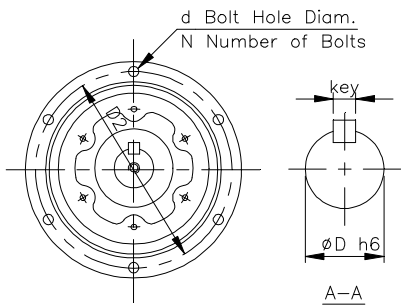
# REDUCER - XF

1 inch = 25.4 mm  
 All dimensions listed are for reference only.  
 Contact factory for certified dimensions.

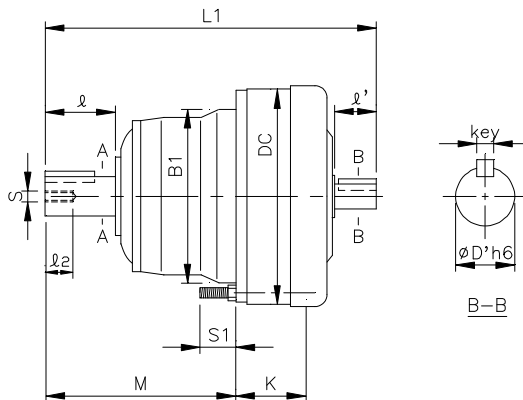
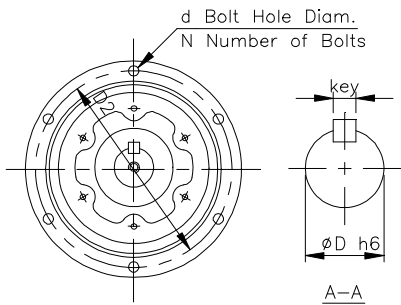
## SINGLE STAGE



B07-XF ~ B12-XF

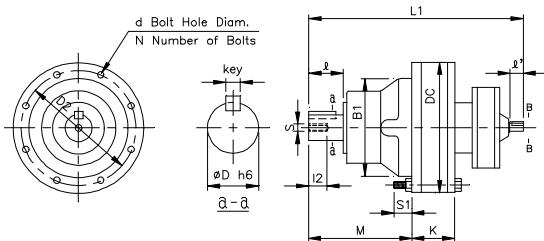


B13-XF ~ B15-XF

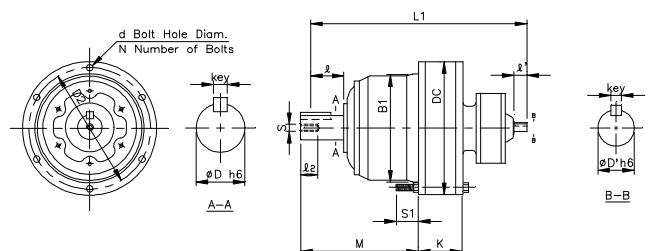


B16-XF ~ B17-XF

## DOUBLE STAGE



B0707-XF ~ B1109-XF



B1310-XF ~ B1711-XF

# REDUCER - XF

1 inch = 25.4 mm  
All dimensions listed are for reference only.  
Contact factory for certified dimensions.

## SINGLE STAGE

### INCH SHAFT

FRAME SIZE	Dim. in mm									Dim. in inch					Dim. in inch			Wt (lb)
	B1	DC	M	K	S1	L1	D2	d	N	Output Shaft					Input Shaft			
										D	I	Key	s	I2	D'	I'	Key	
B07-XF	75	110	69	32	27	145	98	7	6	.500	0.98	1/8 x 1/8 x .79	M6	12	.500	.98	1/8 x 1/8 x .71	6
B08-XF	80	110	75	32	26	151	98	7	6	.750	1.18	3/16 x 3/16 x 1.06	M6	12	.500	.98	1/8 x 1/8 x .71	7
B09-XF	105	150	129	38	26	217	134	9	8	1.125	1.97	1/4 x 1/4 x 1.18	M8	18	.625	.98	3/16 x 3/16 x .75	17
B10-XF	105	150	129	56	27	223	134	9	8	1.125	1.97	1/4 x 1/4 x 1.18	M8	18	.625	.98	3/16 x 3/16 x .75	21
B11-XF	140	204	139	61	28	259	180	11	6	1.500	2.17	3/8 x 3/8 x 1.77	M10	18	.750	1.38	3/16 x 3/16 x 1.02	44
B12-XF	140	204	139	61	28	259	180	11	6	1.500	2.17	3/8 x 3/8 x 1.77	M10	18	.750	1.38	3/16 x 3/16 x 1.02	44
B13-XF	165	230	177	75	30	321	205	11	6	1.875	2.76	1/2 x 1/2 x 2.17	M10	18	.875	1.57	3/16 x 3/16 x 1.38	80
B14-XF	165	230	197	75	30	341	205	11	6	1.875	3.54	1/2 x 1/2 x 2.17	M10	18	.875	1.57	3/16 x 3/16 x 1.38	82
B15-XF	165	230	197	75	30	341	205	11	6	1.875	3.54	1/2 x 1/2 x 2.95	M10	18	.875	1.57	3/16 x 3/16 x 1.38	82
B16-XF	200	318	222	102	40	413	270	14	6	2.250	3.54	1/2 x 1/2 x 2.95	M10	18	1.125	1.77	1/4 x 1/4 x 1.77	146
B17-XF	250	362	262	110	45	477	300	15	8	2.750	3.54	5/8 x 5/8 x 3.15	M12	24	1.375	2.17	5/16 x 5/16 x 2.17	212

### METRIC SHAFT

FRAME SIZE	Dim. in mm									Dim. in mm					Dim. in mm			Wt (kg)
	B1	DC	M	K	S1	L1	D2	d	N	Output Shaft					Input Shaft			
										D	I	Key	s	I2	D'	I'	Key	
B07-XF	75	110	69	32	27	145	98	7	6	14	25	5 x 5 x 20	M6	12	12	25	4 x 4 x 18	3
B08-XF	80	110	75	32	26	151	98	7	6	18	30	6 x 6 x 25	M6	12	12	25	4 x 4 x 18	3
B09-XF	105	150	129	38	26	217	134	9	8	28	50	8 x 7 x 32	M8	18	15	25	5 x 5 x 17	8
B10-XF	105	150	129	56	27	223	134	9	8	28	50	8 x 7 x 32	M8	18	15	25	5 x 5 x 17	10
B11-XF	140	204	139	61	28	259	180	11	6	38	55	10 x 8 x 50	M10	18	18	35	6 x 6 x 25	20
B12-XF	140	204	139	61	28	259	180	11	6	38	55	10 x 8 x 50	M10	18	18	35	6 x 6 x 25	20
B13-XF	165	230	177	75	30	321	205	11	6	50	70	14 x 9 x 56	M10	18	22	40	6 x 6 x 32	36
B14-XF	165	230	197	75	30	341	205	11	6	50	90	14 x 9 x 80	M10	18	22	40	6 x 6 x 32	37
B15-XF	165	230	197	75	30	341	205	11	6	50	90	14 x 9 x 80	M10	18	22	40	6 x 6 x 32	37
B16-XF	200	318	222	102	40	413	270	14	6	60	90	18 x 11 x 80	M10	18	30	45	8 x 7 x 45	66
B17-XF	250	362	262	110	45	477	300	15	8	70	90	20 x 12 x 80	M12	24	35	55	10 x 8 x 55	96

## DOUBLE STAGE

### INCH SHAFT

FRAME SIZE	Dim. in mm									Dim. in inch					Dim. in inch			Wt (lb)
	B1	DC	M	K	S1	L1	D2	d	N	Output Shaft					Input Shaft			
										D	I	Key	s	I2	D1	I1	Key	
B0707-XF	75	110	69	32	27	178	98	7	6	.500	0.98	1/8 x 1/8 x .79	M6	12	.500	.98	1/8 x 1/8 x .71	14
B0807-XF	80	110	75	32	26	184	98	7	6	.750	1.18	3/16 x 3/16 x 1.06	M6	12	.500	.98	1/8 x 1/8 x .71	20
B0908-XF	105	150	129	38	26	258	134	9	8	1.125	1.97	1/4 x 1/4 x 1.18	M8	18	.500	.98	1/8 x 1/8 x .71	30
B1008-XF	105	150	129	56	27	272	134	9	8	1.125	1.97	1/4 x 1/4 x 1.18	M8	18	.500	.98	1/8 x 1/8 x .71	33
B1109-XF	140	204	139	61	28	312	180	11	6	1.500	2.17	3/8 x 3/8 x 1.77	M10	18	.625	.98	3/16 x 3/16 x .75	53
B1310-XF	165	230	177	75	30	369	205	11	6	1.875	2.76	1/2 x 1/2 x 2.17	M10	18	.625	.98	3/16 x 3/16 x .75	90
B1409-XF	165	230	197	75	30	383	205	11	6	1.875	3.54	1/2 x 1/2 x 2.17	M10	18	.625	.98	3/16 x 3/16 x .75	93
B1611-XF	200	318	222	102	40	462	270	14	6	2.250	3.54	1/2 x 1/2 x 2.95	M10	18	.750	1.38	3/16 x 3/16 x 1.02	174
B1711-XF	250	362	262	110	45	509	300	15	8	2.750	3.54	5/8 x 5/8 x 3.15	M12	24	.750	1.38	3/16 x 3/16 x 1.02	243

### METRIC SHAFT

FRAME SIZE	Dim. in mm									Dim. in mm					Dim. in mm			Wt (lb)
	B1	DC	M	K	S1	L1	D2	d	N	Output Shaft					Input Shaft			
										D	I	Key	s	I2	D1	I1	Key	
B0707-XF	75	110	69	32	27	178	98	7	6	14	25	5 x 5 x 20	M6	12	12	25	4 x 4 x 18	6
B0807-XF	80	110	75	32	26	184	98	7	6	18	30	6 x 6 x 25	M6	12	12	25	4 x 4 x 18	9
B0908-XF	105	150	129	38	26	258	134	9	8	28	50	8 x 7 x 32	M8	18	12	25	4 x 4 x 18	14
B1008-XF	105	150	129	56	27	272	134	9	8	28	50	8 x 7 x 32	M8	18	12	25	4 x 4 x 18	15
B1109-XF	140	204	139	61	28	312	180	11	6	38	55	10 x 8 x 50	M10	18	15	25	5 x 5 x 17	24
B1310-XF	165	230	177	75	30	369	205	11	6	50	70	14 x 9 x 56	M10	18	15	25	5 x 5 x 17	41
B1409-XF	165	230	197	75	30	383	205	11	6	50	90	14 x 9 x 80	M10	18	15	25	5 x 5 x 17	42
B1611-XF	200	318	222	102	40	462	270	14	6	60	90	18 x 11 x 80	M10	18	18	35	6 x 6 x 25	79
B1711-XF	250	362	262	110	45	509	300	15	8	70	90	20 x 12 x 80	M12	24	18	35	6 x 6 x 25	110