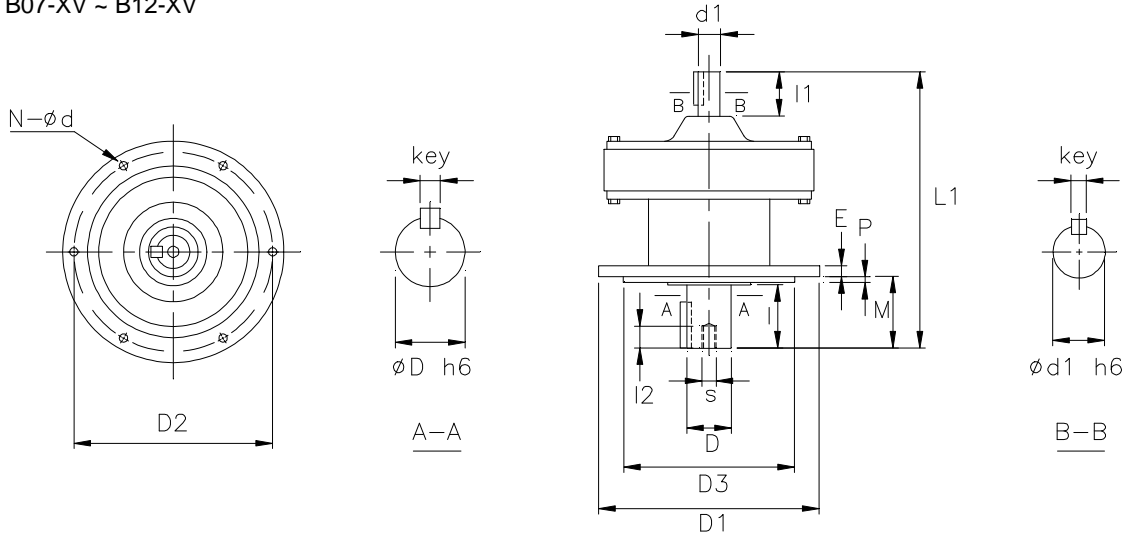


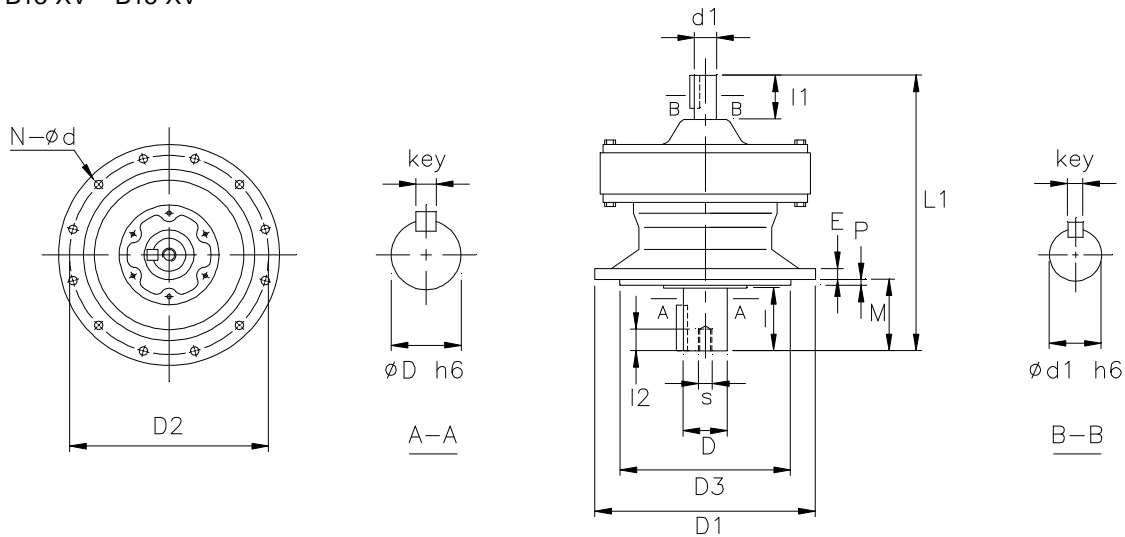
# REDUCER - XV

1 inch = 25.4 mm  
 All dimensions listed are for reference only.  
 Contact factory for certified dimensions.

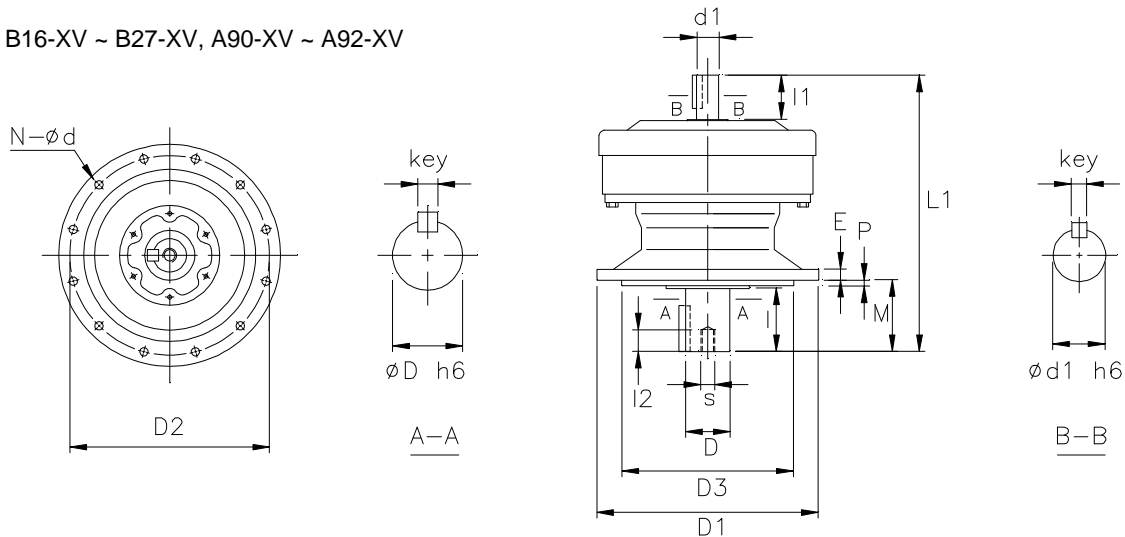
B07-XV ~ B12-XV



B13-XV ~ B15-XV



B16-XV ~ B27-XV, A90-XV ~ A92-XV



# REDUCER - XV

1 inch = 25.4 mm  
All dimensions listed are for reference only.  
Contact factory for certified dimensions.

## INCH SHAFT - SINGLE STAGE

FRAME SIZE	Dim. in mm									Dim. in inch				Dim. in inch			Wt (lb)	
	L1	D1	D2	D3	E	M	N	d	P	Output Shaft				Input Shaft				
										D	I	Key	s	I2	d1	I1	Key	
B07-XV	145	120	102	80	8	34	6	9	3	.500	0.98	1/8 x 1/8 x .79	M6	12	.500	.98	1/8 x 1/8 x .71	8
B08-XV	151	160	134	110	9	42	4	11	3	.750	1.18	3/16 x 3/16 x 1.06	M6	12	.500	.98	1/8 x 1/8 x .71	9
B09-XV	217	160	134	110	9	63	4	11	3	1.125	1.97	1/4 x 1/4 x 1.18	M8	18	.625	.98	3/16 x 3/16 x .75	20
B10-XV	223	160	134	110	9	63	4	11	3	1.125	1.97	1/4 x 1/4 x 1.18	M8	18	.625	.98	3/16 x 3/16 x .75	24
B11-XV	259	210	180	140	13	69	6	11	4	1.500	2.17	3/8 x 3/8 x 1.77	M10	18	.750	1.38	3/16 x 3/16 x 1.02	51
B12-XV	259	210	180	140	13	69	6	11	4	1.500	2.17	3/8 x 3/8 x 1.77	M10	18	.750	1.38	3/16 x 3/16 x 1.02	51
B13-XV	321	260	230	200	15	76	6	11	4	1.875	2.76	1/2 x 1/2 x 2.17	M10	18	.875	1.57	3/16 x 3/16 x 1.38	93
B14-XV	341	260	230	200	15	96	6	11	4	1.875	3.54	1/2 x 1/2 x 2.17	M10	18	.875	1.57	3/16 x 3/16 x 1.38	95
B15-XV	341	260	230	200	15	96	6	11	4	1.875	3.54	1/2 x 1/2 x 2.95	M10	18	.875	1.57	3/16 x 3/16 x 1.38	95
B16-XV	413	340	310	270	20	89	6	11	4	2.250	3.54	1/2 x 1/2 x 2.95	M10	18	1.125	1.77	1/4 x 1/4 x 1.77	176
B17-XV	477	400	360	316	22	94	8	14	5	2.750	3.54	5/8 x 5/8 x 3.15	M12	24	1.375	2.17	5/16 x 5/16 x 2.17	276
B18-XV	527	430	390	345	22	110	8	18	5	3.125	4.33	3/4 x 3/4 x 3.74	M12	24	1.500	2.56	3/8 x 3/8 x 2.56	331
B19-XV	620	490	450	400	30	145	12	18	6	3.625	5.31	7/8 x 7/8 x 4.92	M20	34	1.750	2.76	3/8 x 3/8 x 2.56	507
B20-XV	678	455	405	355	30	204	8	22	5	3.875	6.50	1 x 1 x 6.50	M20	34	1.750	3.23	3/8 x 3/8 x 3.23	551
B21-XV	708	490	440	390	35	203	8	24	7	4.250	6.50	1 x 1 x 6.50	M20	34	1.875	3.23	1/2 x 1/2 x 3.23	705
B22-XV	752	535	475	415	35	210	8	27	10	4.625	6.50	1 1/4 x 7/8 x 6.50	M20	34	2.125	3.23	1/2 x 1/2 x 3.23	893
B23-XV	839	570	510	450	40	250	8	27	10	5.000	7.87	1 1/4 x 7/8 x 7.87	M24	41	2.250	4.13	1/2 x 1/2 x 4.13	1047
B24-XV	877	635	560	485	40	250	8	33	10	5.500	7.87	1 1/4 x 7/8 x 7.87	M24	41	2.500	4.13	5/8 x 5/8 x 4.13	1257
B25-XV	1040	685	610	535	45	295	8	33	10	6.250	9.45	1 1/2 x 1 x 9.45	M30	49	3.125	5.12	3/4 x 3/4 x 5.12	1918
B26-XV	1150	750	660	570	50	360	8	39	10	6.625	11.81	1.75 x 1.25 x 11.8	M30	49	3.125	5.12	3/4 x 3/4 x 5.12	2491
B27-XV	1462	1160	1020	900	60	355	8	39	10	7.000	13.0	1.75 x 1.25 x 13	M30	52	3.500	5.91	7/8 x 7/8 x 5.91	5776
A90-XV	740	580	520	455	35	190	12	22	8	4.250	6.69	1 x 1 x 6.31	M20	34	1.875	3.15	1/2 x 1/2 x 3.16	849
A91-XV	851	650	590	520	40	242	12	22	10	4.625	8.28	1 1/4 x 7/8 x 7.88	M24	42	2.125	3.54	1/2 x 1/2 x 3.53	1190
A92-XV	1110	880	800	680	50	252	12	33	10	5.500	9.84	1 1/4 x 7/8 x 9.66	M30	52	2.750	4.72	5/8 x 5/8 x 4.72	2359

## METRIC SHAFT - SINGLE STAGE

FRAME SIZE	Dim. in mm									Dim. in mm				Dim. in mm			Wt (kg)	
	L1	D1	D2	D3	E	M	N	d	P	Output Shaft				Input Shaft				
										D	I	Key	s	I2	d1	I1	Key	
B07-XV	145	120	102	80	8	34	6	9	3	14	25	5 x 5 x 20	M6	12	12	25	4 x 4 x 18	4
B08-XV	151	160	134	110	9	42	4	11	3	18	30	6 x 6 x 25	M6	12	12	25	4 x 4 x 18	4
B09-XV	217	160	134	110	9	63	4	11	3	28	50	8 x 7 x 32	M8	18	15	25	5 x 5 x 17	9
B10-XV	223	160	134	110	9	63	4	11	3	28	50	8 x 7 x 32	M8	18	15	25	5 x 5 x 17	11
B11-XV	259	210	180	140	13	69	6	11	4	38	55	10 x 8 x 50	M10	18	18	35	6 x 6 x 25	23
B12-XV	259	210	180	140	13	69	6	11	4	38	55	10 x 8 x 50	M10	18	18	35	6 x 6 x 25	23
B13-XV	321	260	230	200	15	76	6	11	4	50	70	14 x 9 x 56	M10	18	22	40	6 x 6 x 32	42
B14-XV	341	260	230	200	15	96	6	11	4	50	90	14 x 9 x 80	M10	18	22	40	6 x 6 x 32	43
B15-XV	341	260	230	200	15	96	6	11	4	50	90	14 x 9 x 80	M10	18	22	40	6 x 6 x 32	43
B16-XV	413	340	310	270	20	89	6	11	4	60	90	18 x 11 x 80	M10	18	30	45	8 x 7 x 45	80
B17-XV	477	400	360	316	22	94	8	14	5	70	90	20 x 12 x 80	M12	24	35	55	10 x 8 x 55	125
B18-XV	527	430	390	345	22	110	8	18	5	80	110	22 x 14 x 100	M12	24	40	65	12 x 8 x 45	150
B19-XV	620	490	450	400	30	145	12	18	6	95	135	25 x 14 x 125	M20	34	45	70	14 x 9 x 70	230
B20-XV	678	455	405	355	30	204	8	22	5	100	165	28 x 16 x 165	M20	34	45	82	14 x 9 x 82	250
B21-XV	708	490	440	390	35	203	8	24	7	110	165	28 x 16 x 165	M20	34	50	82	14 x 9 x 82	320
B22-XV	752	535	475	415	35	210	8	27	10	120	165	32 x 18 x 165	M20	34	55	82	16 x 10 x 82	405
B23-XV	839	570	510	450	40	250	8	27	10	130	200	32 x 18 x 200	M24	41	60	105	18 x 11 x 105	475
B24-XV	877	635	560	485	40	250	8	33	10	140	200	36 x 20 x 200	M24	41	65	105	18 x 11 x 105	570
B25-XV	1040	685	610	535	45	295	8	33	10	160	240	40 x 22 x 240	M30	49	80	130	22 x 14 x 130	870
B26-XV	1150	750	660	570	50	360	8	39	10	170	300	40 x 22 x 300	M30	49	80	130	22 x 14 x 130	1130
B27-XV	1462	1160	1020	900	60	355	8	39	10	180	330	45 x 25 x 330	M30	52	90	150	25 x 14 x 135	2620
A90-XV	740	580	520	455	35	190	12	22	8	110	170	28 x 18 x 155	M20	34	50	80	14 x 8 x 70	385
A91-XV	851	650	590	520	40	242	12	22	10	120	210	32 x 20 x 195	M24	42	55	90	15 x 10 x 80	540
A92-XV	1110	880	800	680	50	252	12	33	10	140	250	35 x 22 x 230	M30	52	70	120	18 x 12 x 105	1070