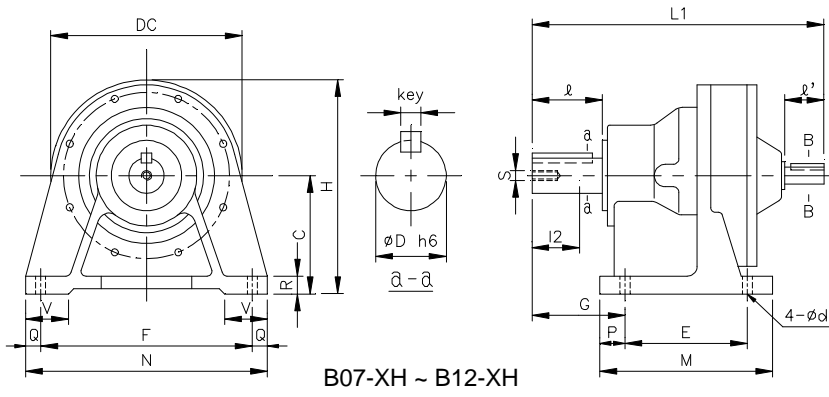
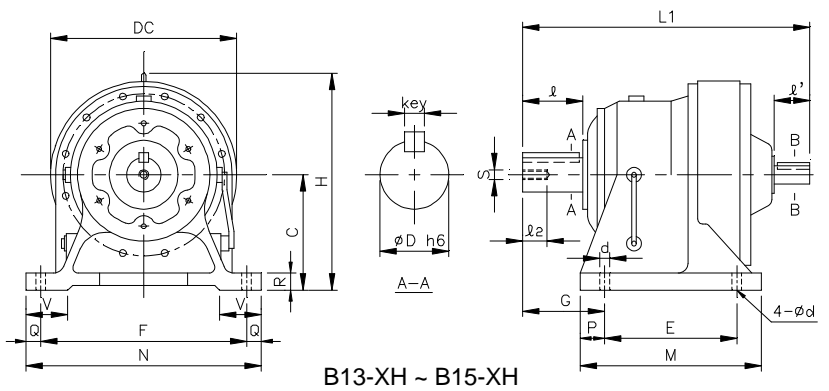


REDUCER - XH

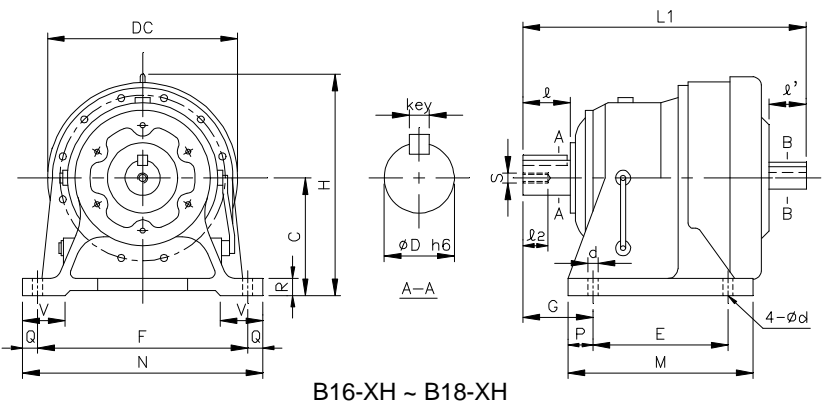
1 inch = 25.4 mm
 All dimensions listed are for reference only.
 Contact factory for certified dimensions.



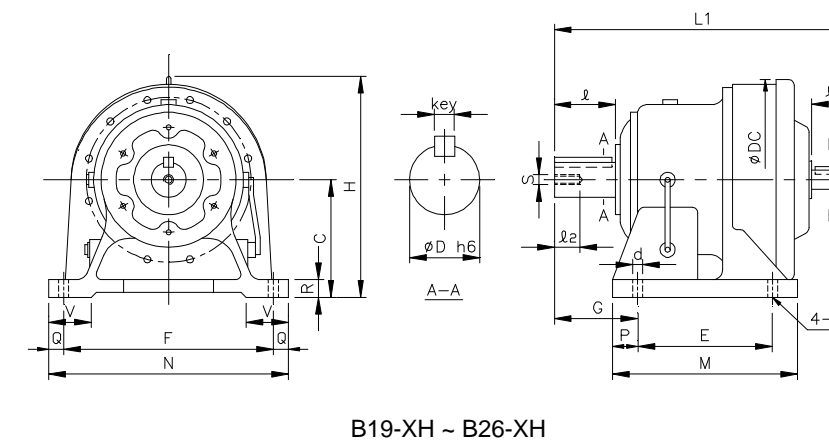
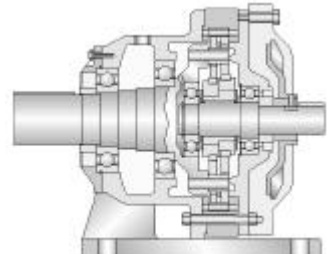
B07-XH ~ B12-XH



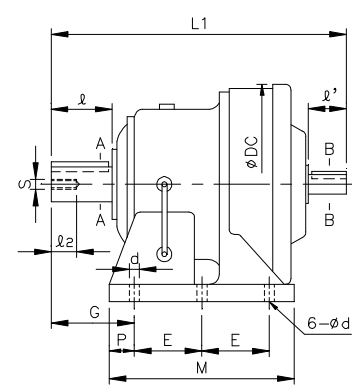
B13-XH ~ B15-XH



B16-XH ~ B18-XH



B19-XH ~ B26-XH



B27-XH, A90-XH ~ A93-XH
 (w/ 6 Mounting Holes)

REDUCER - XH

1 inch = 25.4 mm
All dimensions listed are for reference only.
Contact factory for certified dimensions.

INCH SHAFT - SINGLE STAGE

FRAME SIZE	Dim. in mm														Dim. in inch					Dim. in inch			Wt (lb)
	C	DC	E	F	G	H	L1	M	N	P	Q	R	V	d	Output Shaft					Input Shaft			
	D	I	Key	s	l2	D'	I'	Key	(lb)														
B07-XH	80	110	60	120	41	135	145	84	144	12	12	12	35	9	.500	0.98	1/8 x 1/8 x .79	M6	12	.500	.98	1/8 x 1/8 x .71	7
B08-XH	80	110	60	120	47	135	151	84	144	12	12	12	35	9	.750	1.18	3/16 x 3/16 x 1.06	M6	12	.500	.98	1/8 x 1/8 x .71	7
B09-XH	100	150	90	150	75	175	217	130	180	15	15	17	40	11	1.125	1.97	1/4 x 1/4 x 1.18	M8	18	.625	.98	3/16 x 3/16 x .75	24
B10-XH	100	150	90	150	75	175	223	135	180	15	15	17	40	11	1.125	1.97	1/4 x 1/4 x 1.18	M8	18	.625	.98	3/16 x 3/16 x .75	29
B11-XH	120	204	115	190	82	222	259	155	230	20	20	21	55	14	1.500	2.17	3/8 x 3/8 x 1.77	M10	18	.750	1.38	3/16 x 3/16 x 1.02	53
B12-XH	140	204	115	190	82	242	259	155	230	20	20	21	55	14	1.500	2.17	3/8 x 3/8 x 1.77	M10	18	.750	1.38	3/16 x 3/16 x 1.02	57
B13-XH	150	230	145	290	100	265	321	195	330	25	20	27	65	18	1.875	2.76	1/2 x 1/2 x 2.17	M10	18	.875	1.57	3/16 x 3/16 x 1.38	95
B14-XH	150	230	145	290	120	265	341	195	330	25	20	27	65	18	1.875	3.54	1/2 x 1/2 x 2.17	M10	18	.875	1.57	3/16 x 3/16 x 1.38	99
B15-XH	160	230	145	290	120	275	341	195	330	25	20	27	70	18	1.875	3.54	1/2 x 1/2 x 2.95	M10	18	.875	1.57	3/16 x 3/16 x 1.38	101
B16-XH	160	318	150	370	139	319	413	238	410	44	20	30	75	18	2.250	3.54	1/2 x 1/2 x 2.95	M10	18	1.125	1.77	1/4 x 1/4 x 1.77	185
B17-XH	200	362	275	380	125	381	477	335	430	30	25	32	80	22	2.750	3.54	5/8 x 5/8 x 3.15	M12	24	1.375	2.17	5/16 x 5/16 x 2.17	276
B18-XH	220	390	320	420	145	415	527	380	470	30	25	33	85	22	3.125	4.33	3/4 x 3/4 x 3.74	M12	24	1.500	2.56	3/8 x 3/8 x 2.56	359
B19-XH	250	451	380	480	170	476	620	440	530	30	25	40	90	26	3.625	5.31	7/8 x 7/8 x 4.92	M20	34	1.750	2.76	3/8 x 3/8 x 2.56	529
B20-XH	250	471	360	440	215	485	678	440	530	40	45	40	100	26	3.875	6.50	1 x 1 x 6.50	M20	34	1.750	3.23	3/8 x 3/8 x 3.23	573
B21-XH	265	507	395	480	210	518	708	475	580	40	50	42	110	26	4.250	6.50	1 x 1 x 6.50	M20	34	1.875	3.23	1/2 x 1/2 x 3.23	750
B22-XH	280	549	420	540	230	554	752	520	620	50	40	42	115	33	4.625	6.50	1 1/4 x 7/8 x 6.50	M20	34	2.125	3.23	1/2 x 1/2 x 3.23	904
B23-XH	300	591	460	580	260	595	839	560	670	50	45	45	120	33	5.000	7.87	1 1/4 x 7/8 x 7.87	M24	41	2.250	4.13	1/2 x 1/2 x 4.13	1124
B24-XH	335	637	480	630	263	654	877	580	720	50	45	45	128	39	5.500	7.87	1 1/4 x 7/8 x 7.87	M24	41	2.500	4.13	5/8 x 5/8 x 4.13	1367
B25-XH	375	703	520	670	320	726	1040	630	780	55	55	50	140	39	6.250	9.45	1 1/2 x 1 x 9.45	M30	49	3.125	5.12	3/4 x 3/4 x 5.12	2116
B26-XH	400	772	590	770	390	786	1150	700	880	55	55	55	160	45	6.625	11.81	1.75 x 1.25 x 11.8	M30	49	3.125	5.12	3/4 x 3/4 x 5.12	2646
B27-XH	540	986	420	1050	485	1033	1462	1040	1160	100	55	60	200	45	7.000	13.0	1.75 x 1.25 x 13	M30	52	3.500	5.91	7/8 x 7/8 x 5.91	5423
A90-XH	290	532	240	560	215	556	740	560	620	40	30	40	100	26	4.250	6.69	1 x 1 x 6.31	M20	34	1.875	3.15	1/2 x 1/2 x 3.16	849
A91-XH	325	600	250	630	290	625	851	600	690	50	30	40	105	26	4.625	8.28	1 1/4 x 7/8 x 7.88	M24	42	2.125	3.54	1/2 x 1/2 x 3.53	1190
A92-XH	420	760	330	800	372	800	1110	810	880	75	40	50	143	39	5.500	9.84	1 1/4 x 7/8 x 9.66	M30	52	2.750	4.72	5/8 x 5/8 x 4.72	2359
A93-XH	540	1010	420	1050	485	1045	1462	1040	1160	100	55	60	200	45	7.000	13.0	1 3/4 x 1 1/4 x 13	M30	52	3.500	5.91	7/8 x 7/8 x 5.91	5357

METRIC SHAFT - SINGLE STAGE

FRAME SIZE	Dim. in mm														Dim. in mm					Dim. in mm			Wt (kg)
	C	DC	E	F	G	H	L1	M	N	P	Q	R	V	d	Output Shaft					Input Shaft			
	D	I	Key	s	l2	D'	I'	Key	(kg)														
B07-XH	80	110	60	120	41	135	145	84	144	12	12	12	35	9	14	25	5 x 5 x 20	M6	12	12	25	4 x 4 x 18	3
B08-XH	80	110	60	120	47	135	151	84	144	12	12	12	35	9	18	30	6 x 6 x 25	M6	12	12	25	4 x 4 x 18	3
B09-XH	100	150	90	150	75	175	217	130	180	15	15	17	40	11	28	50	8 x 7 x 32	M8	18	15	25	5 x 5 x 17	11
B10-XH	100	150	90	150	75	175	223	135	180	15	15	17	40	11	28	50	8 x 7 x 32	M8	18	15	25	5 x 5 x 17	13
B11-XH	120	204	115	190	82	222	259	155	230	20	20	21	55	14	38	55	10 x 8 x 50	M10	18	18	35	6 x 6 x 25	24
B12-XH	140	204	115	190	82	242	259	155	230	20	20	21	55	14	38	55	10 x 8 x 50	M10	18	18	35	6 x 6 x 25	26
B13-XH	150	230	145	290	100	265	321	195	330	25	20	27	65	18	50	70	14 x 9 x 56	M10	18	22	40	6 x 6 x 32	43
B14-XH	150	230	145	290	120	265	341	195	330	25	20	27	65	18	50	90	14 x 9 x 80	M10	18	22	40	6 x 6 x 32	45
B15-XH	160	230	145	290	120	275	341	195	330	25	20	27	70	18	50	90	14 x 9 x 80	M10	18	22	40	6 x 6 x 32	46
B16-XH	160	318	150	370	139	319	413	238	410	44	20	30	75	18	60	90	18 x 11 x 80	M10	18	30	45	8 x 7 x 45	84
B17-XH	200	362	275	380	125	381	477	335	430	30	25	32	80	22	70	90	20 x 12 x 80	M12	24	35	55	10 x 8 x 55	125
B18-XH	220	390	320	420	145	415	527	380	470	30	25	33	85	22	80	110	22 x 14 x 100	M12	24	40	65	12 x 8 x 45	163
B19-XH	250	451	380	480	170	476	620	440	530	30	25	40	90	26	95	135	25 x 14 x 125	M20	34	45	70	14 x 9 x 70	240
B20-XH	250	471	360	440	215	485	678	440	530	40	45	40	100	26	100	165	28 x 16 x 165	M20	34	45	82	14 x 9 x 82	260
B21-XH	265	507	395	480	210	518	708	475	580	40	50	42	110	26	110	165	28 x 16 x 165	M20	34	50	82	14 x 9 x 82	340
B22-XH	280	549	420	540	230	554	752	520	620	50	40	42	115	33	120	165	32 x 18 x 165	M20	34	55	82	16 x 10 x 82	410
B23-XH	300	591	460	580	260	595	839	560	670	50	45	45	120	33	130	200	32 x 18 x 200	M24	41	60	105	18 x 11 x 105	510
B24-XH	335	637	480	630	263	654	877	580	720	50	45	45	128	39	140	200	36 x 20 x 200	M24	41	65	105	18 x 11 x 105	620
B25-XH	375	703	520	670	320	726	1040	630	780	55	55	50	140	39	160	240	40 x 22 x 240	M30	49	80	130	22 x 14 x 130	960
B26-XH	400	772	590	770	390	786	1150	700	880	55	55	55	160	45	170	300	40 x 22 x 300	M30	49	80	130	22 x 14 x 130	1200
B27-XH	540	986	420	1050	485	1033	1462	1040	1160	100	55	60	200	45	180	330	45 x 25 x 330	M30	52	90	150	25 x 14 x 135	2460
A90-XH	290	532	240	560	215	556	740	560	620	40	30	40	100	26	110	170	28 x 18 x 155	M20	34	50	80	14 x 8 x 70	385.1
A91-XH	325	600	250	630	290	625	851	600	690	50	30	40	105	26	120	210	32 x 20 x 195	M24	42	55	90	15 x 10 x 80	539.8
A92-XH	420	760	330	800	372	800	1110	810	880	75	40	50	143	39	140	250	35 x 22 x 230	M30	52	70	120	18 x 12 x 105	1070
A93-XH	540	1010	420	1050	485	1045	1462	1040	1160	100	55	60	200	45	180	330	42 x 26 x 265	M30	52	90	150	24 x 16 x 135	2430

What are A90, A91, A92, and A93 ?

When we changed from A Series to B Series Cycloidal Drives, most of the smaller frame sizes within both A Series and B Series share the same foot print, shaft center height, and shaft diameter. However, the four largest frame sizes in A Series (A90~A93) evolved into eight frame sizes in B Series (B20~B27). Since B20~B26 do not share the same mounting pattern as A90~A92, it is sometimes difficult for the A90~A92 users to find a direct drop-in replacement for its A90~A92 speed reducers. To make it convenient for our customers, DARALI@DRIVES is making A90~A93 available for easy drop-in replacement.

No mounting changes are required.