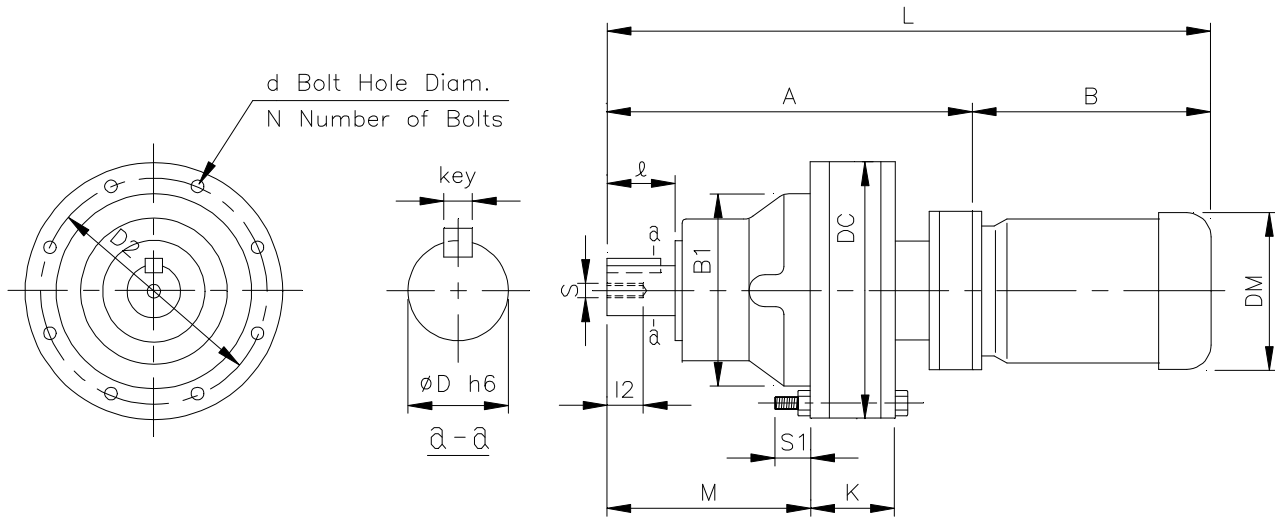


INTEGRAL GEARMOTOR - MF

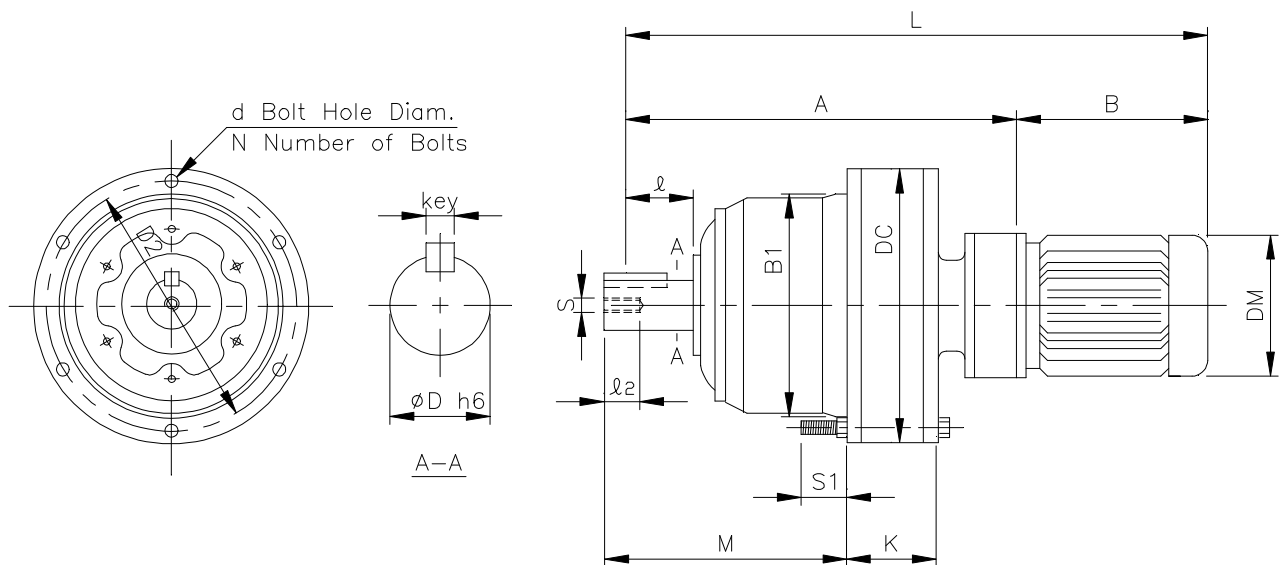
1 inch = 25.4 mm
 All dimensions listed are for reference only.
 Contact factory for certified dimensions.

INCH SHAFT - DOUBLE STAGE



B0707-MF ~ B1109-MF

FRAME SIZE	Dim. in mm													Dim. in inch				Wt (lb)
	A	B	DM	B1	DC	M	K	S1	L	D2	d	N	D	I	Key	s	l2	
B0707-(1/8M)F	125	200	130	75	110	69	32	27	325	98	7	6	.500	0.98	1/8 x 1/8 x .79	M6	12	20
B0807-(1/8M)F	131	200	130	80	110	75	32	26	331	98	7	6	.750	1.18	3/16 x 3/16 x 1.06	M6	12	22
B0908-(1/8M)F	205	200	130	105	150	129	38	26	405	134	9	8	1.125	1.97	1/4 x 1/4 x 1.18	M8	18	37
B0908-(1/4M)F	205	218	144	105	150	129	38	26	423	134	9	8	1.125	1.97	1/4 x 1/4 x 1.18	M8	18	40
B1008-(1/8M)F	219	200	130	105	150	129	56	27	419	134	9	8	1.125	1.97	1/4 x 1/4 x 1.18	M8	18	42
B1008-(1/4M)F	219	218	144	105	150	129	56	27	437	134	9	8	1.125	1.97	1/4 x 1/4 x 1.18	M8	18	44
B1008-(1/2M)F	219	238	162	105	150	129	56	27	457	134	9	8	1.125	1.97	1/4 x 1/4 x 1.18	M8	18	49
B1109-(1/8M)F	252	200	130	140	204	139	61	28	452	180	11	6	1.500	2.17	3/8 x 3/8 x 1.77	M10	18	66
B1109-(1/4M)F	252	218	144	140	204	139	61	28	470	180	11	6	1.500	2.17	3/8 x 3/8 x 1.77	M10	18	79
B1109-(1/2M)F	252	238	162	140	204	139	61	28	490	180	11	6	1.500	2.17	3/8 x 3/8 x 1.77	M10	18	84
B1310-(1M)F	317	248	177	165	230	177	75	30	565	205	11	6	1.875	2.76	1/2 x 1/2 x 2.17	M10	18	121
B1310-(2M)F	317	285	200	165	230	177	75	30	602	205	11	6	1.875	2.76	1/2 x 1/2 x 2.17	M10	18	130
B1409-(1/4M)F	323	218	144	165	230	197	75	30	541	205	11	6	1.875	3.54	1/2 x 1/2 x 2.17	M10	18	108
B1409-(1/2M)F	323	238	162	165	230	197	75	30	561	205	11	6	1.875	3.54	1/2 x 1/2 x 2.17	M10	18	112
B1409-(1M)F	323	248	177	165	230	197	75	30	571	205	11	6	1.875	3.54	1/2 x 1/2 x 2.17	M10	18	117
B1611-(3M)F	389	316	219	200	318	222	102	40	705	270	14	6	2.250	3.54	1/2 x 1/2 x 2.95	M10	18	243
B1611-(5M)F	389	346	238	200	318	222	102	40	735	270	14	6	2.250	3.54	1/2 x 1/2 x 2.95	M10	18	282
B1711-(3M)F	436	317	219	250	362	262	110	45	753	300	15	8	2.750	3.54	5/8 x 5/8 x 3.15	M12	24	320
B1711-(5M)F	436	347	238	250	362	262	110	45	783	300	15	8	2.750	3.54	5/8 x 5/8 x 3.15	M12	24	359

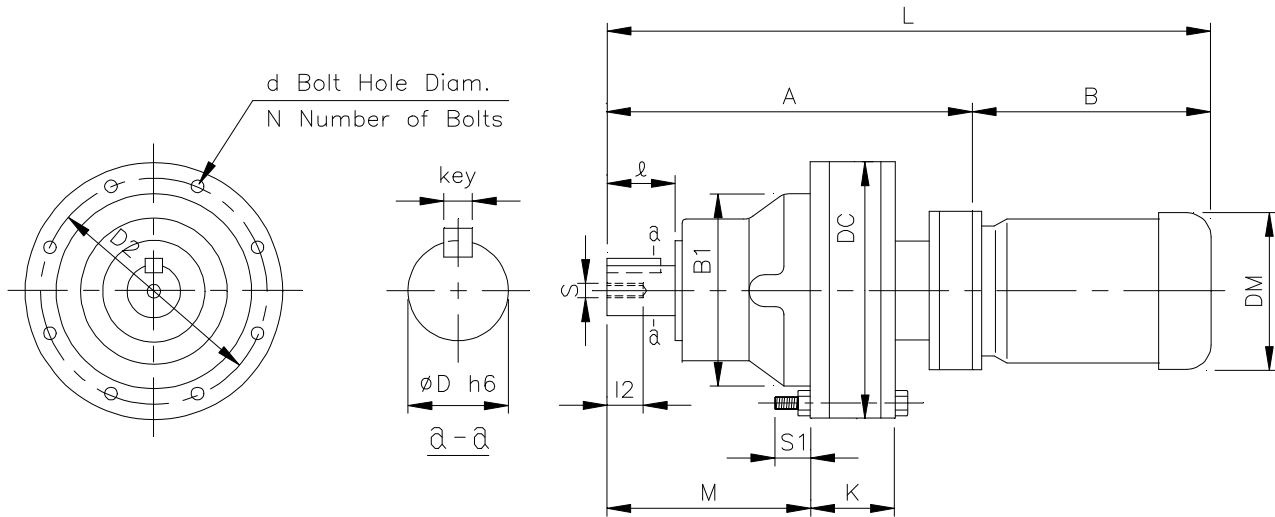


B1310-MF ~ B1711-MF

INTEGRAL GEARMOTOR - MF

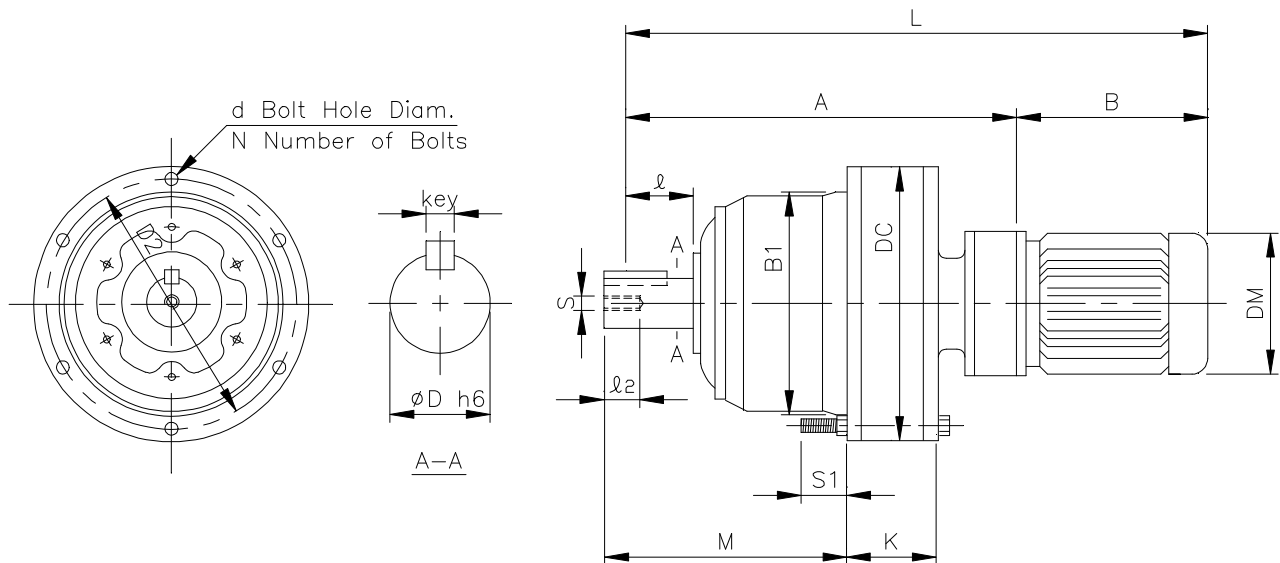
1 inch = 25.4 mm
All dimensions listed are for reference only.
Contact factory for certified dimensions.

METRIC SHAFT - DOUBLE STAGE



B0707-MF ~ B1109-MF

FRAME SIZE	Dim. in mm													Output Shaft			Wt (kg)	
	A	B	DM	B1	DC	M	K	S1	L	D2	d	N	D	I	Key	s		I2
B0707-(1/8M)F	125	200	130	75	110	69	32	27	325	98	7	6	14	25	5 x 5 x 20	M6	12	9
B0807-(1/8M)F	131	200	130	80	110	75	32	26	331	98	7	6	18	30	6 x 6 x 25	M6	12	10
B0908-(1/8M)F	205	200	130	105	150	129	38	26	405	134	9	8	28	50	8 x 7 x 32	M8	18	17
B0908-(1/4M)F	205	218	144	105	150	129	38	26	423	134	9	8	28	50	8 x 7 x 32	M8	18	18
B1008-(1/8M)F	219	200	130	105	150	129	56	27	419	134	9	8	28	50	8 x 7 x 32	M8	18	19
B1008-(1/4M)F	219	218	144	105	150	129	56	27	437	134	9	8	28	50	8 x 7 x 32	M8	18	20
B1008-(1/2M)F	219	238	162	105	150	129	56	27	457	134	9	8	28	50	8 x 7 x 32	M8	18	22
B1109-(1/8M)F	252	200	130	140	204	139	61	28	452	180	11	6	38	55	10 x 8 x 50	M10	18	30
B1109-(1/4M)F	252	218	144	140	204	139	61	28	470	180	11	6	38	55	10 x 8 x 50	M10	18	36
B1109-(1/2M)F	252	238	162	140	204	139	61	28	490	180	11	6	38	55	10 x 8 x 50	M10	18	38
B1310-(1M)F	317	248	177	165	230	177	75	30	565	205	11	6	50	70	14 x 9 x 56	M10	18	55
B1310-(2M)F	317	285	200	165	230	177	75	30	602	205	11	6	50	70	14 x 9 x 56	M10	18	59
B1409-(1/4M)F	323	218	144	165	230	197	75	30	541	205	11	6	50	90	14 x 9 x 80	M10	18	49
B1409-(1/2M)F	323	238	162	165	230	197	75	30	561	205	11	6	50	90	14 x 9 x 80	M10	18	51
B1409-(1M)F	323	248	177	165	230	197	75	30	571	205	11	6	50	90	14 x 9 x 80	M10	18	53
B1611-(3M)F	389	316	219	200	318	222	102	40	705	270	14	6	60	90	18 x 11 x 80	M10	18	110
B1611-(5M)F	389	346	238	200	318	222	102	40	735	270	14	6	60	90	18 x 11 x 80	M10	18	128
B1711-(3M)F	436	317	219	250	362	262	110	45	753	300	15	8	70	90	20 x 12 x 80	M12	24	145
B1711-(5M)F	436	347	238	250	362	262	110	45	783	300	15	8	70	90	20 x 12 x 80	M12	24	163



B1310-MF ~ B1711-MF